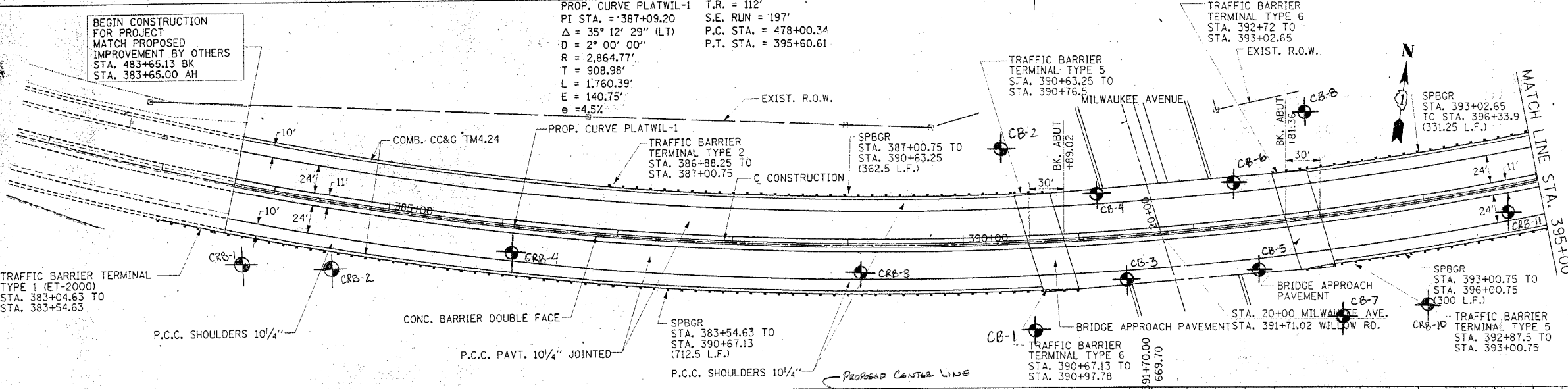
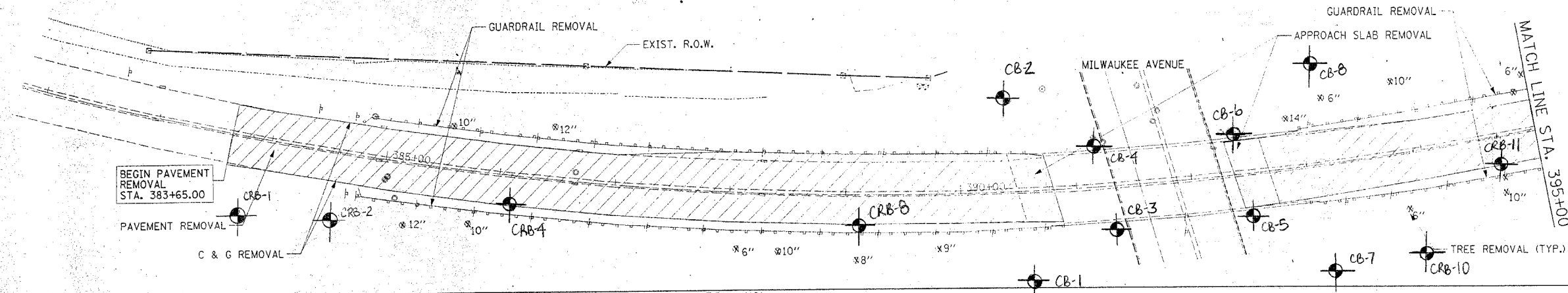


F.A.P. RTE.	SECTION	COUNTY	TOTAL SHEETS	SHEET NO.
305	211 K-R-1	COOK	115	130
STA. 383+65.00		TO STA. 395+00.00		
FED. ROAD DIST. NO.		ILLINOIS FED. AID PROJECT		



NOTES:

1. FOR THE WILLOW RD. BRIDGE OVER MILWAUKEE AVENUE DETAILS, SEE DRAWINGS SA-1 THROUGH SA-28

