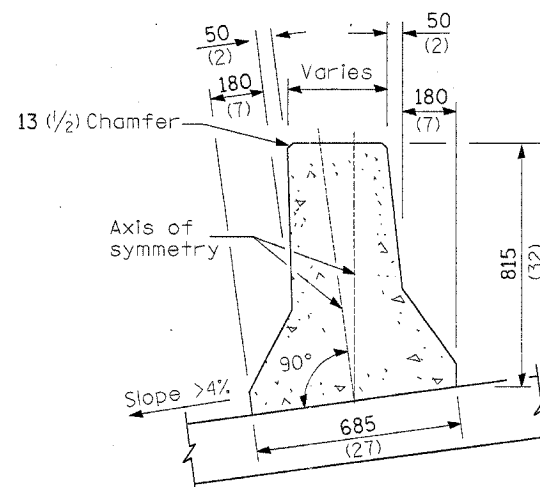
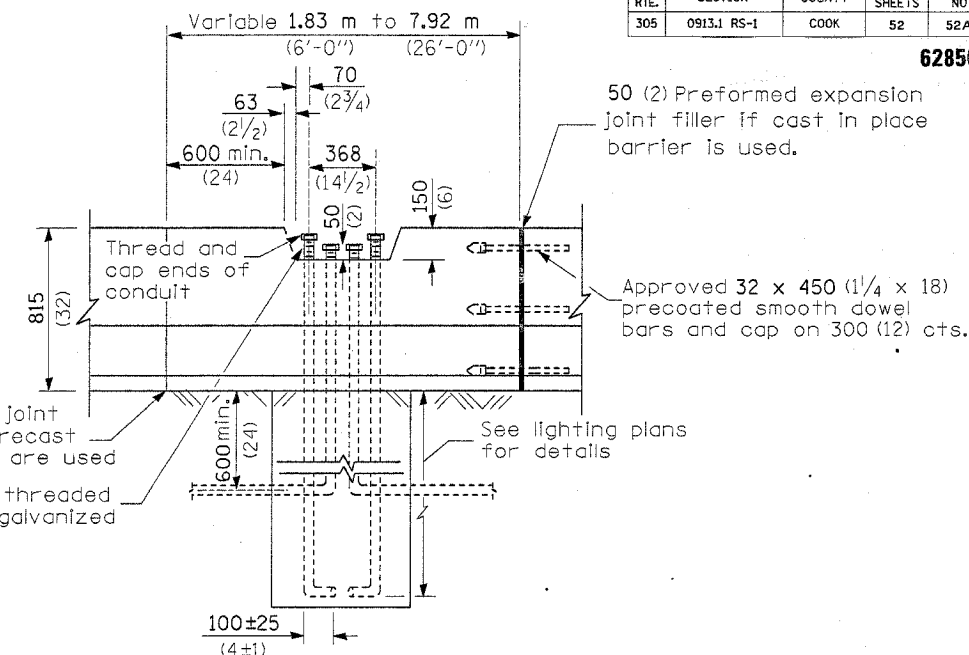


END SECTION

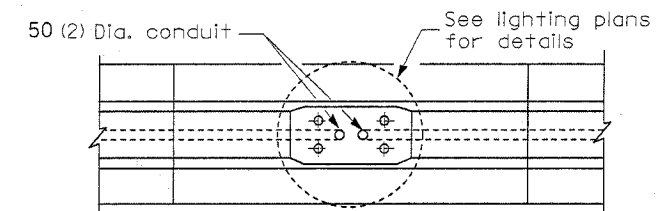


TYPICAL SECTION FOR SLOPES > 4%

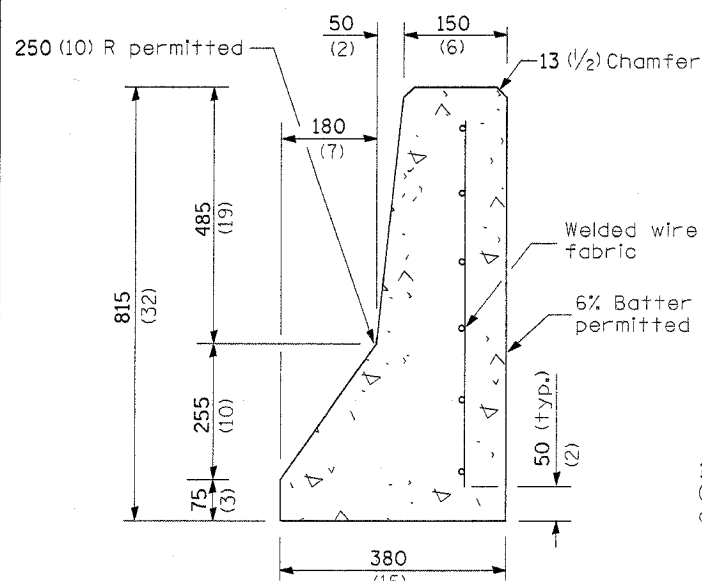
4-M38 (1 1/2) Anchors bolts threaded 100 (4) + and hot dipped galvanized 225±25 (9±1) (cap ends).



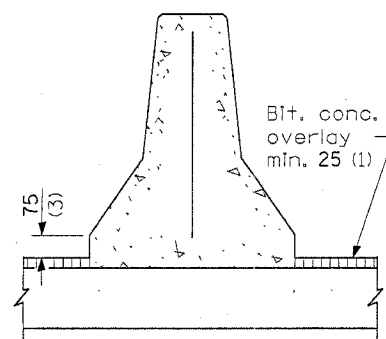
PLAN VIEW



TOP VIEW OF LIGHTING SUPPORT UNIT

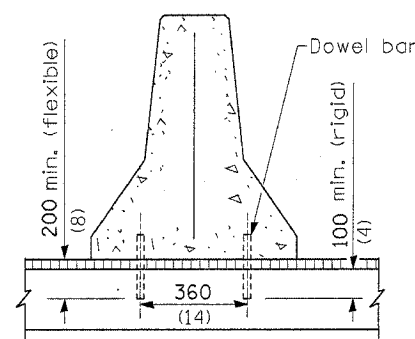


DETAIL OF SINGLE FACE BARRIER



BARRIER ON NEW OR EXISTING BASE

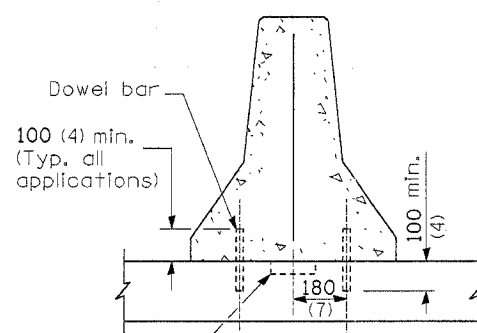
(Overlay placed after barrier)



BARRIER ON NEW OR EXISTING BASE

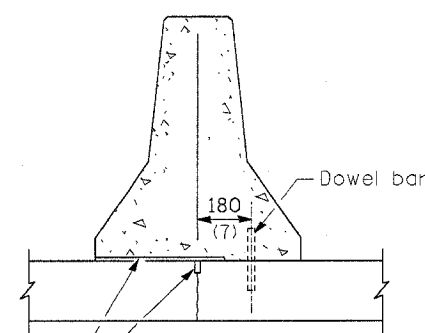
(Overlay placed before barrier)

TYPICAL BARRIER APPLICATIONS



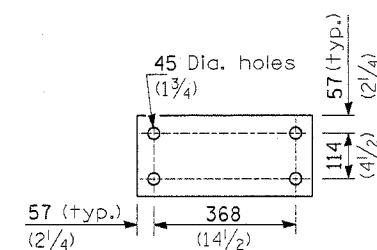
BARRIER ON NEW OR EXISTING RIGID BASE

Optional 50 x 150 (2 x 6) keyway in lieu of dowels



BARRIER PLACED OVER LONGITUDINAL JOINT

Existing longitudinal joint
Polyethylene bond breaker (min., 0.15 (6 mils) thick)



BASE PLATE

(To be furnished by the lighting contractor)

GENERAL NOTES

The individual tolerances shown may not be added together to exceed the overall tolerances shown.

All dimensions are in millimeters (inches) unless otherwise shown.

DATE	REVISIONS
1-1-00	Rev. metric value 610 to 600. Rev. 600 in Sec. A-A to 150. Sec. C-C to D-D.
1-1-97	Renum. Standard 2333-5. Deleted DN Symbol.
	Revised metric values.

CONCRETE BARRIER
(CAST IN PLACE DETAILS)

DETAIL A

Illinois Department of Transportation

PASSED January 1, 2000

ISSUED 1-1-00

ENGINEER OF POLICY AND PROCEDURES

APPROVED January 1, 2000

ENGINEER OF DESIGN AND ENVIRONMENT