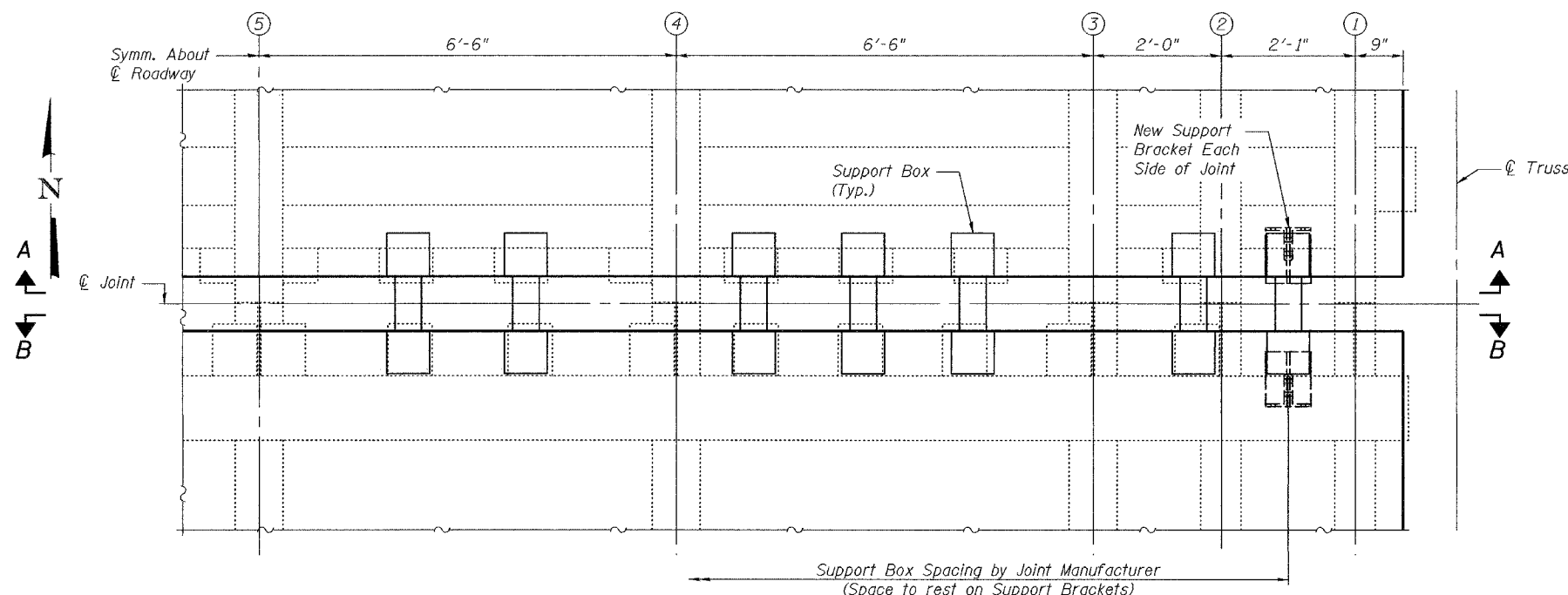


STATE OF ILLINOIS  
DEPARTMENT OF TRANSPORTATION

ROUTE NO.	SECTION	COUNTY	TOTAL SHEETS	SHEET NO.
		Will	16	10
ILLINOIS FED. AID PROJECT-				

SHEET NO. 6  
11 SHEETS

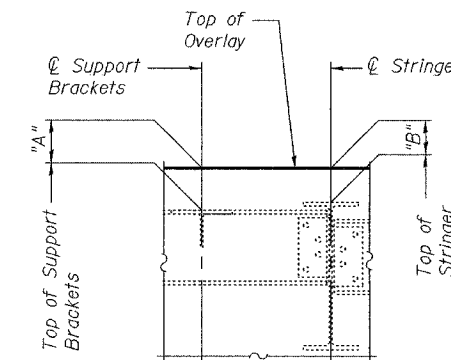
Contract: 62861



PARTIAL PLAN AT L13

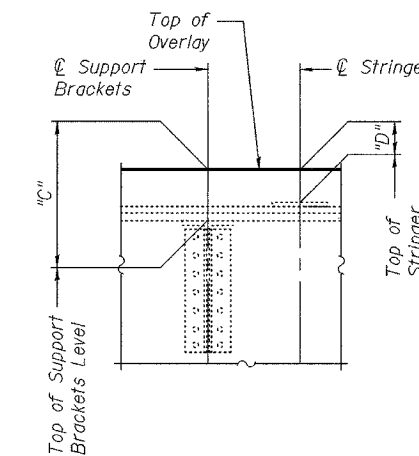
NORTH SIDE OF JOINT

Stringer or Support	Dim "A" at $\ominus$ Support	Dim "B" at $\ominus$ Bearing
1	-	5 <sup>15</sup> / <sub>16</sub> "
A	9 <sup>1</sup> / <sub>2</sub> "	-
2	-	6 <sup>3</sup> / <sub>16</sub> "
B	9 <sup>1</sup> / <sub>4</sub> "	-
3	-	8 <sup>1</sup> / <sub>8</sub> "
C	9 <sup>7</sup> / <sub>16</sub> "	-
D	10 <sup>3</sup> / <sub>16</sub> "	-
E	10 <sup>5</sup> / <sub>16</sub> "	-
4	-	7 <sup>1</sup> / <sub>8</sub> "
F	9 <sup>3</sup> / <sub>8</sub> "	-
G	9 <sup>3</sup> / <sub>4</sub> "	-
H	10 <sup>5</sup> / <sub>16</sub> "	-
J	10 <sup>3</sup> / <sub>8</sub> "	-
5	-	8 <sup>3</sup> / <sub>4</sub> "

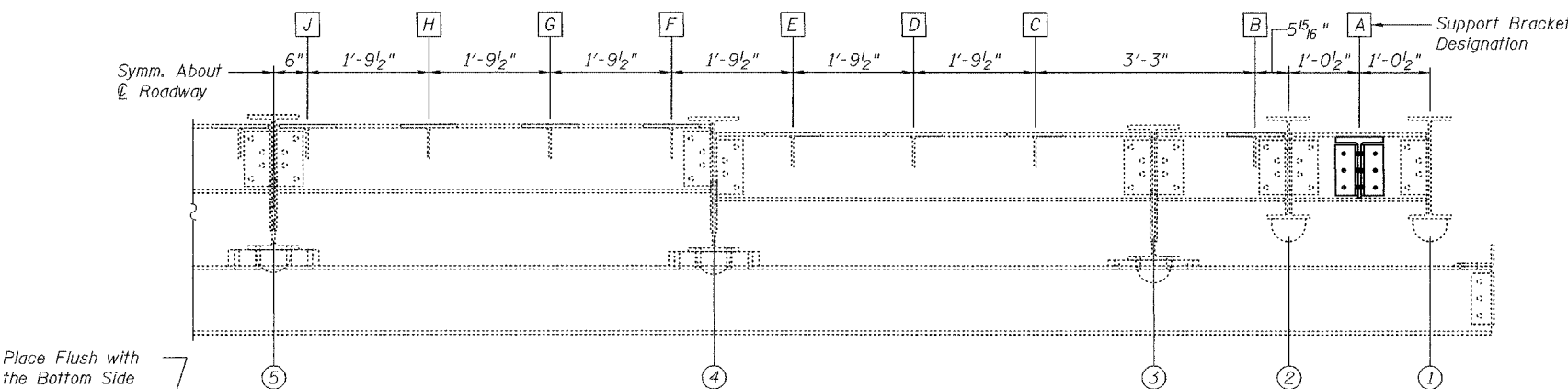


SOUTH SIDE OF JOINT

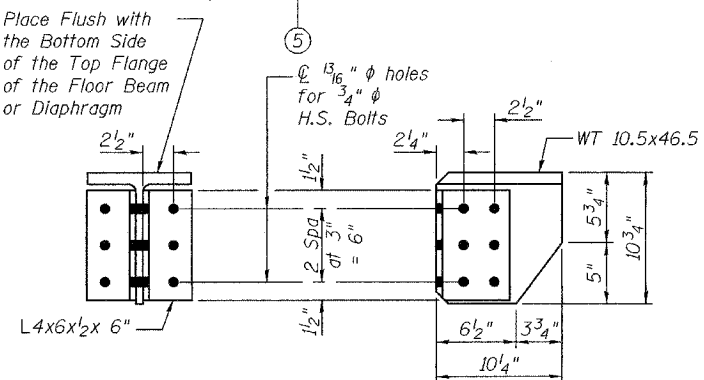
Stringer or Support	Dim "C" at $\ominus$ Support	Dim "D" at $\ominus$ Bearing
1	-	5 <sup>15</sup> / <sub>16</sub> "
A	9"	-
2	-	6 <sup>3</sup> / <sub>16</sub> "
B	9 <sup>1</sup> / <sub>4</sub> "	-
3	-	8 <sup>1</sup> / <sub>8</sub> "
C	9 <sup>1</sup> / <sub>16</sub> "	-
D	10"	-
E	10 <sup>5</sup> / <sub>16</sub> "	-
F	10 <sup>5</sup> / <sub>8</sub> "	-
4	-	7 <sup>1</sup> / <sub>8</sub> "
G	10 <sup>7</sup> / <sub>8</sub> "	-
H	11 <sup>1</sup> / <sub>4</sub> "	-
J	11 <sup>5</sup> / <sub>8</sub> "	-
K	1'-0"	-
5	-	8 <sup>3</sup> / <sub>4</sub> "



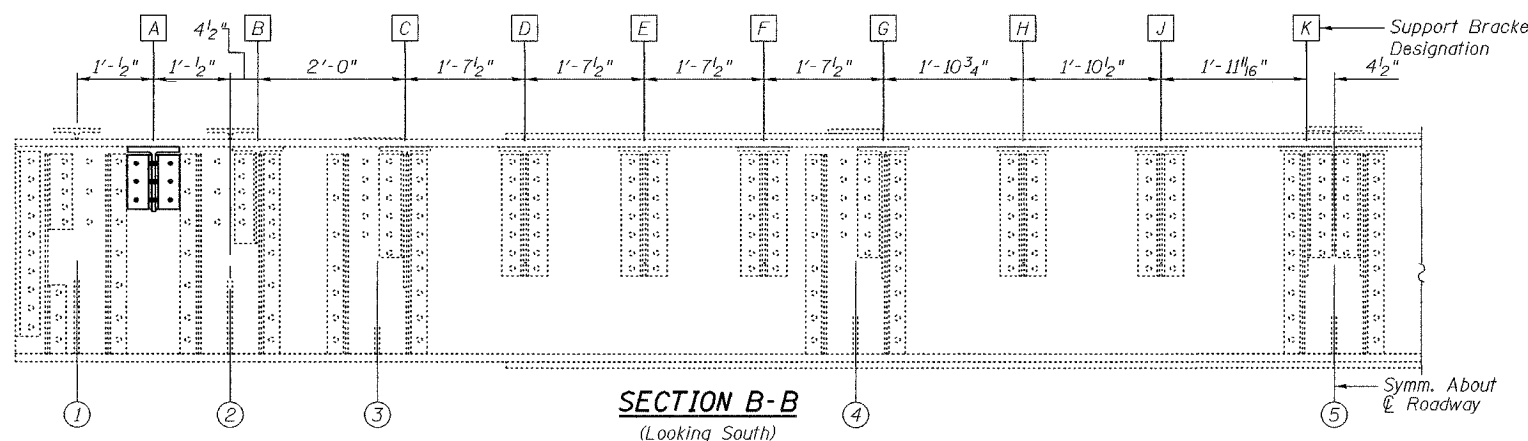
- Notes:
1. Modular Expansion Joint shall be designed according to the latest ASTM Specifications for HS20 Loading with 30% impact and for minimum movement of  $\pm 3"$  (Total of 6"). See Special Provisions for Modular Expansion Joint.
  2. Joint shall be fabricated and installed according to the manufacturer's recommendations and as approved by the Engineer. Support brackets may be added as required by Modular Expansion Joint Fabricator. See New Support Bracket Details. Cost included with Modular Expansion Joint.
  3. Joint shall be fabricated to conform to the existing Cross-Slopes. See sheet 2 of 11 for details. Match Existing Conditions.
  4. Cost of all hardware and installation of Steel Bearing Shim plates and additional reinforcement required to anchor the joint to the slab shall be included with "Modular Expansion Joint"
  5. The inorganic zinc rich primer/acrylic/acrylic paint system shall be used for shop and field painting of new structural steel except no top coat required in non-exposed areas. The color of the acrylic finish coat shall be Gray, Munsell No. 5B 7/1. See Special Provisions "Cleaning and Painting New Metal Structures".



SECTION A-A  
(Looking North)



NEW SUPPORT BRACKET DETAIL



SECTION B-B  
(Looking South)

DESIGNED	J.S.B.
CHECKED	A.T.H.
DRAWN	Drew Christopher
CHECKED	J.S.B., A.T.H.

January 24, 2005

EXAMINED *John A. Morris*  
ENGINEER OF STRUCTURAL SERVICES

PASSED *Ralph E. Anderson*  
ENGINEER OF BRIDGES AND STRUCTURES

L13 DETAILS  
F.A.I. RT.55  
WILL COUNTY  
SN 099-0008