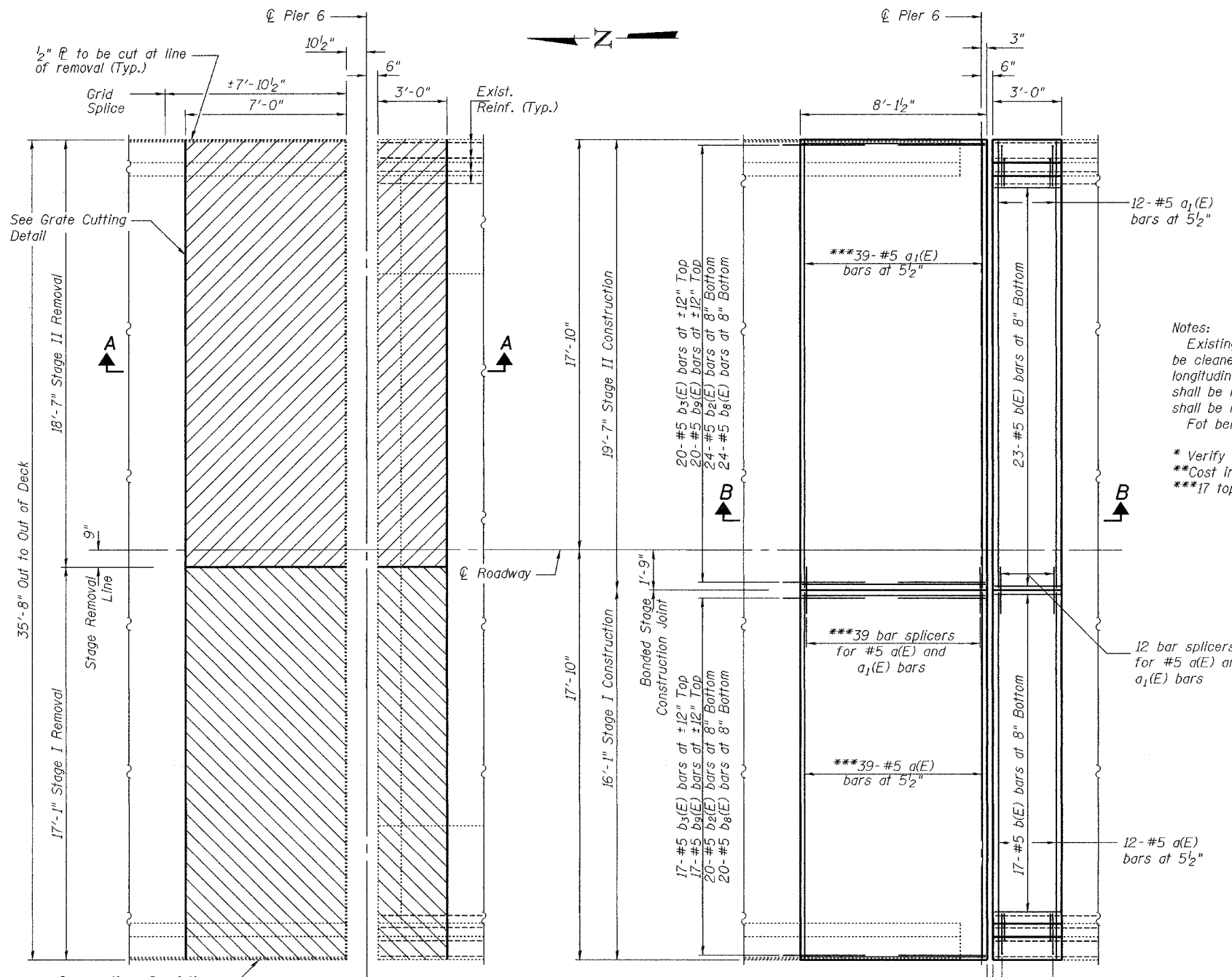


Hatched areas indicate concrete sections to be removed and replaced. Perimeters of concrete removal areas shall be saw cut 3/4" prior to the removal of concrete.

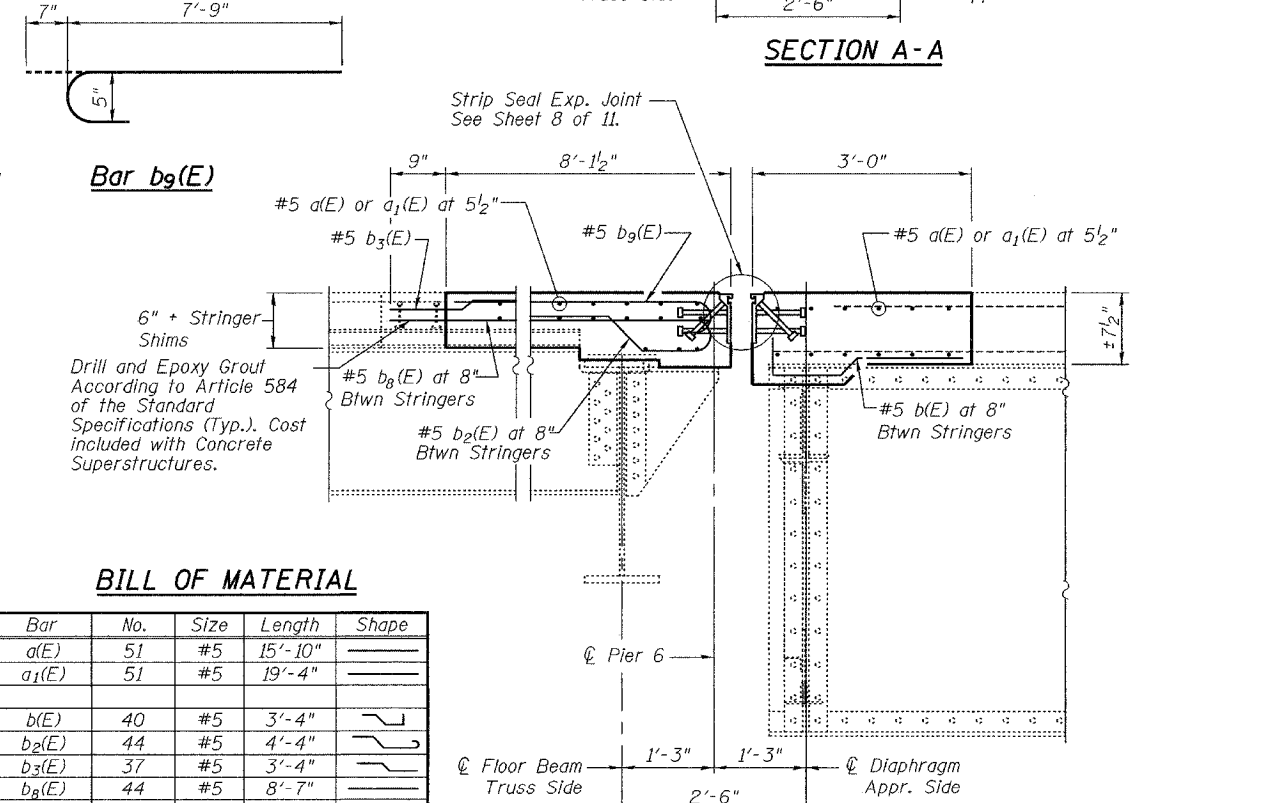
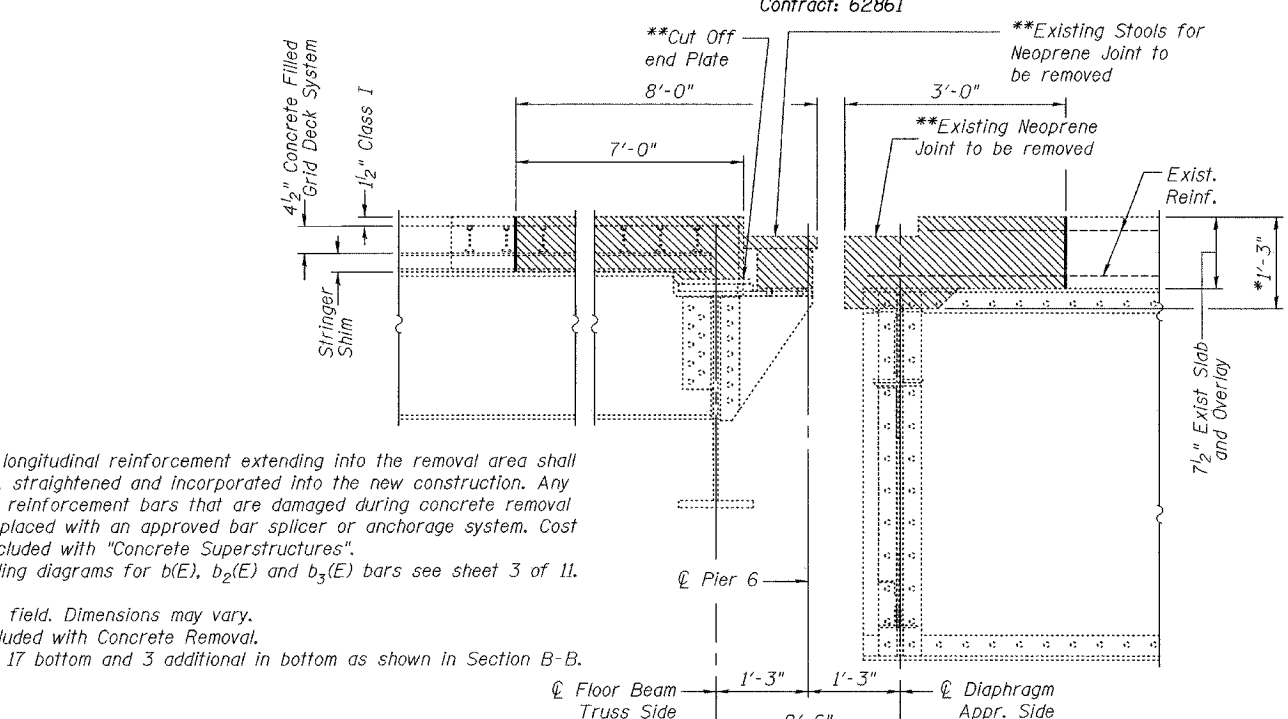
STATE OF ILLINOIS
DEPARTMENT OF TRANSPORTATION

ROUTE NO.	SECTION	COUNTY	TOTAL SHEETS	SHEET NO.
		Will	16	11
FED. ROAD DIST. NO. 7		ILLINOIS		FED. AID PROJECT-

SHEET NO. 7
11 SHEETS



Notes:
Existing longitudinal reinforcement extending into the removal area shall be cleaned, straightened and incorporated into the new construction. Any longitudinal reinforcement bars that are damaged during concrete removal shall be replaced with an approved bar splicer or anchorage system. Cost shall be included with "Concrete Superstructures".
For bending diagrams for b(E), b2(E) and b3(E) bars see sheet 3 of 11.
* Verify in field. Dimensions may vary.
**Cost included with Concrete Removal.
***17 top, 17 bottom and 3 additional in bottom as shown in Section B-B.

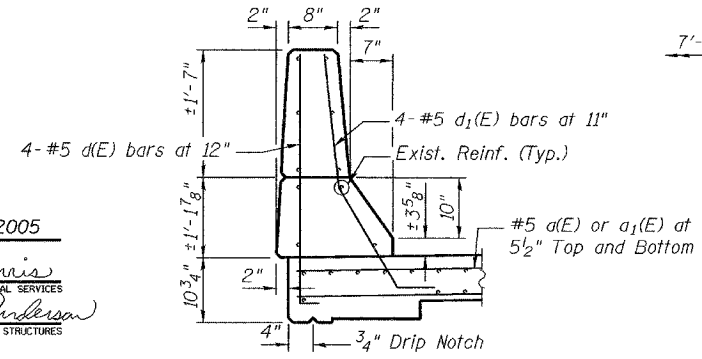


BILL OF MATERIAL

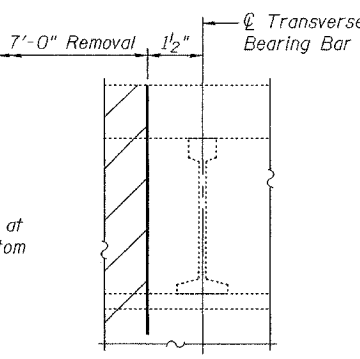
Bar	No.	Size	Length	Shape
a(E)	51	#5	15'-10"	—
a1(E)	51	#5	19'-4"	—
b(E)	40	#5	3'-4"	—
b2(E)	44	#5	4'-4"	—
b3(E)	37	#5	3'-4"	—
b4(E)	44	#5	8'-7"	—
b5(E)	37	#5	8'-4"	—
d(E)	8	#5	3'-8"	—
d1(E)	8	#5	3'-11"	—
Concrete Removal			Cu. Yd.	9.4
Concrete Superstructure			Cu. Yd.	11.2
Reinforcement Bars, Epoxy Coated			Pound	3120
Strip Seal Expansion Joint Assembly			Foot	36

Reinforcement bars designated (E) shall be epoxy coated.

PIER 6 PLAN



GRATE CUTTING DETAIL



One section of existing aluminum parapet to be removed, stored, and re-installed. (Typ. Each Stage). Cost included with Concrete Removal.

DESIGNED	A.T.H.
CHECKED	J.S.B.
DRAWN	Drew Christopher
CHECKED	J.S.B., A.T.H.

January 24, 2005
EXAMINED *John A. Morris*
ENGINEER OF STRUCTURAL SERVICES
PASSED *Ralph E. Anderson*
ENGINEER OF BRIDGES AND STRUCTURES

PIER 6 DETAILS
F.A.I. RT.55
WILL COUNTY
SN 099-0008