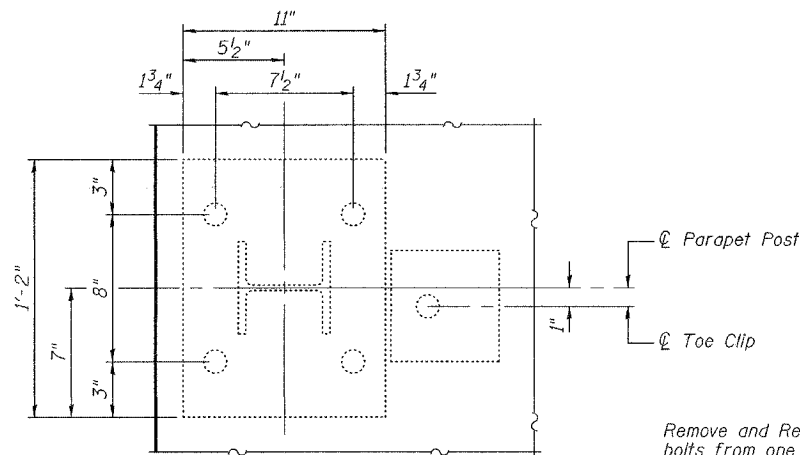


STATE OF ILLINOIS
DEPARTMENT OF TRANSPORTATION

ROUTE NO.	SECTION	COUNTY	STATE	SHEET
		Will	16	13
FED. ROAD DIST. NO. 7		ILLINOIS FED. AID PROJECT-		

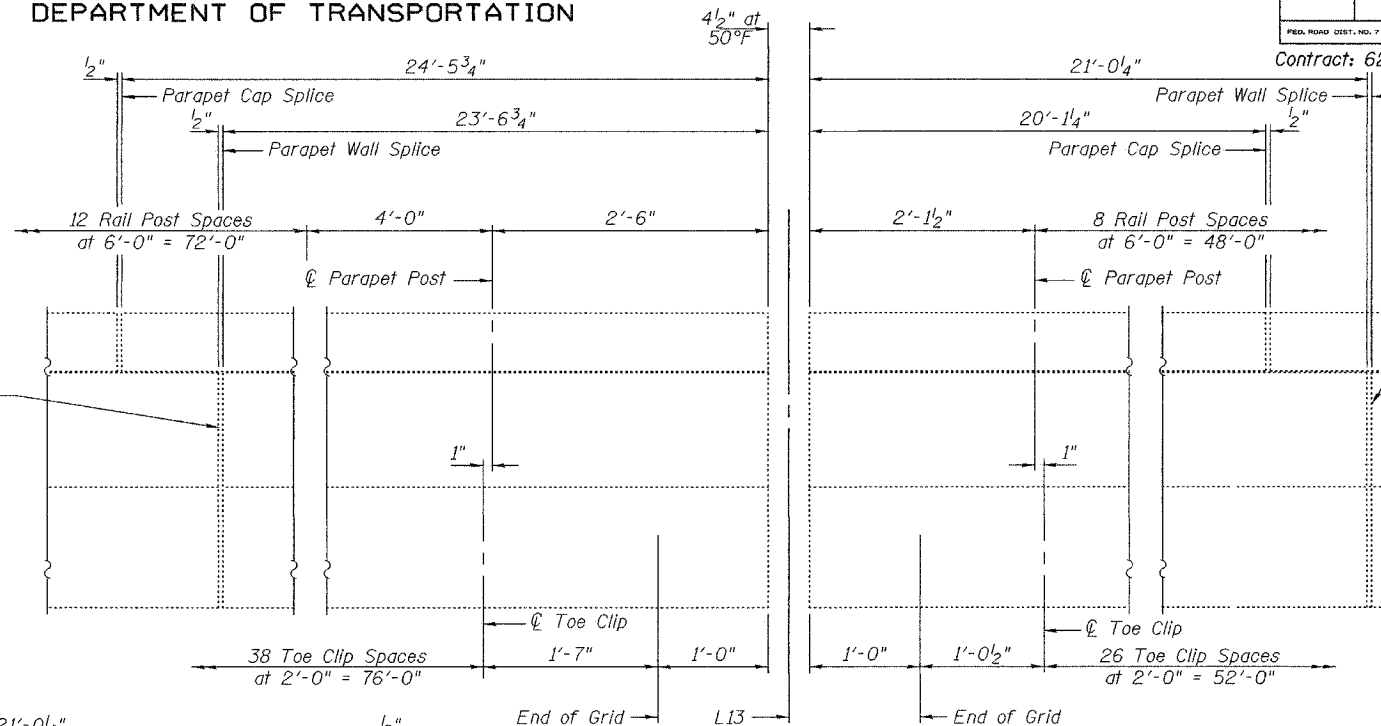
SHEET NO. 9
11 SHEETS

Contract: 62861



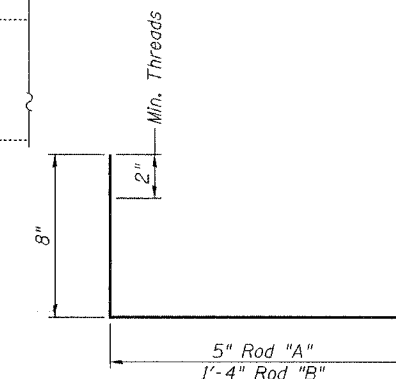
PLAN AT PARAPET POST

Remove and Replace existing bolts from one side of the existing splice. Bolts to be 2 1/2" x 5/8" Stainless Steel with nut and washer.

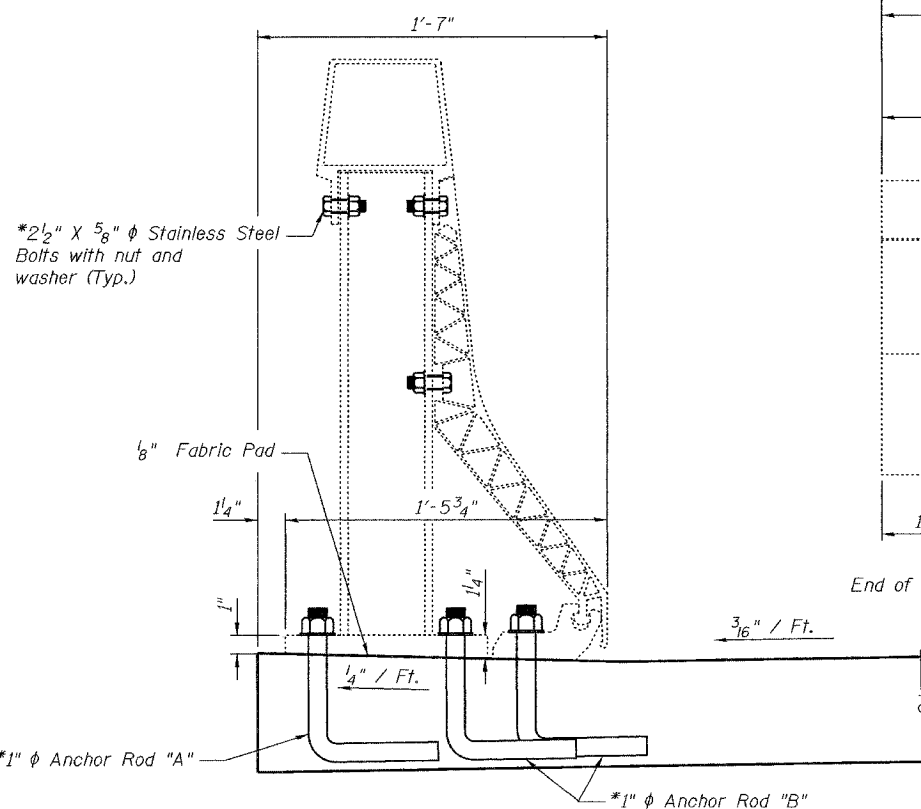


INSIDE ELEVATION AT L13

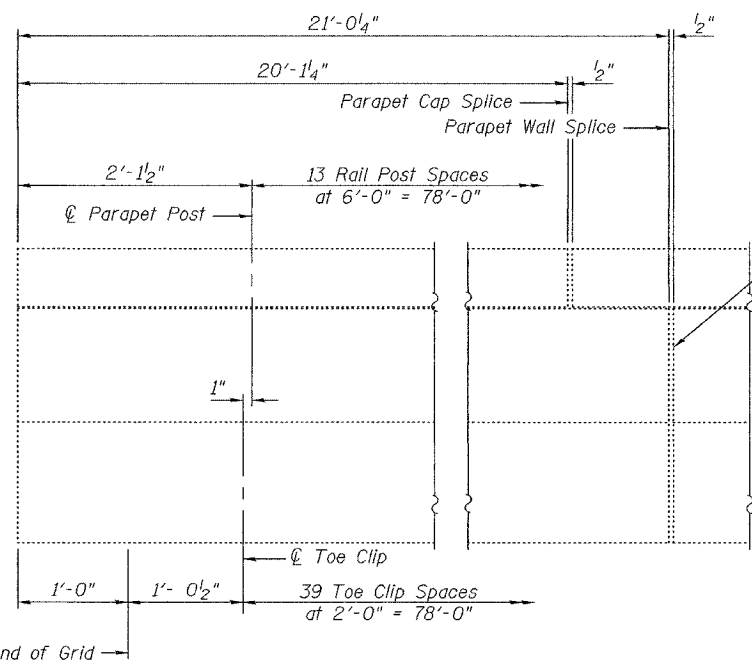
Remove and Replace existing bolts from one side of the existing splice. Bolts to be 2 1/2" x 5/8" Stainless Steel with nut and washer.



ANCHOR RODS "A" AND "B"



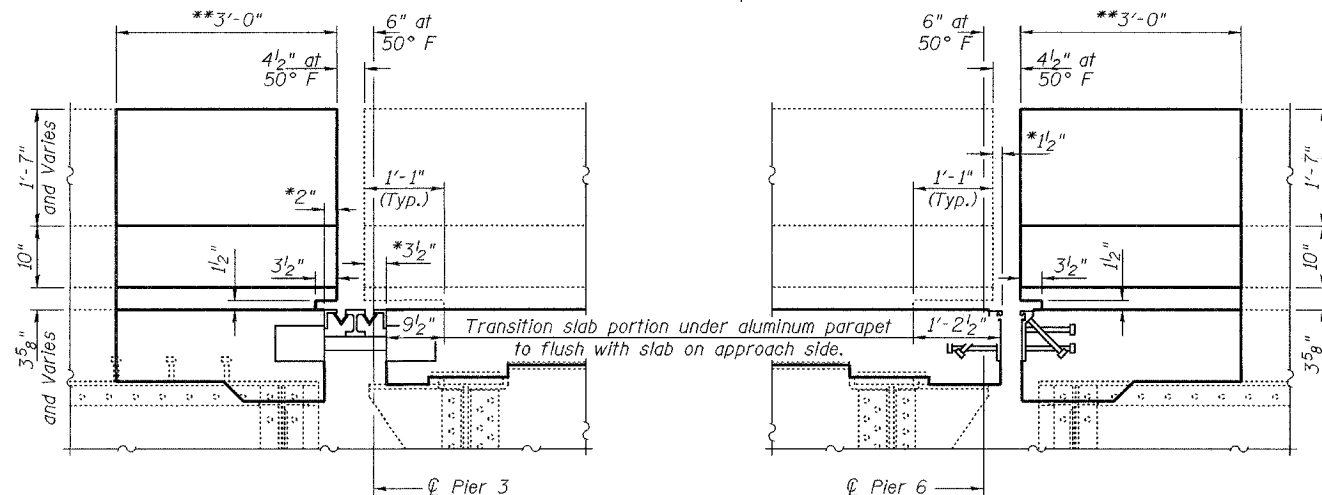
PARAPET POST ELEVATION



INSIDE ELEVATION AT PIERS 3 AND 6

Remove and Replace existing bolts from one side of the existing splice. Bolts to be 2 1/2" x 5/8" Stainless Steel with nut and washer.

*Dimensions may vary as required by Joint Manufacturer.
**Transition to Match Alum Parapet.



ELEVATION AT JOINTS FROM CONCRETE PARAPET TO ALUMINUM PARAPET

(Place joints out to out and underneath parapets.)

*Cost of stainless steel bolts and anchor rods is included in the cost of Concrete Superstructure.

ALUMINUM PARAPET DETAILS

F.A.I. RT.55
WILL COUNTY
SN 099-0008

DESIGNED	A.T.H.
CHECKED	J.S.B.
DRAWN	Drew Christopher
CHECKED	J.S.B. A.T.H.

EXAMINED	January 24, 2005
	John A. Morris
	ENGINEER OF STRUCTURAL SERVICES
PASSED	Ralph E. Anderson
	ENGINEER OF BRIDGES AND STRUCTURES