


ROUTE	SECTION	COUNTY	TOTAL SHEETS	SHEET NUMBER
FAI 55	1818.3 (1H, 2H) BR-1	COOK	39	5


CONTRACT NO. 62867

- LOCATION 1 (SN 016-0036)**


EB I-55 (STEVENS ON EXPY)
OVER PRAIRE AVE. TO I.C.R.R.


- LOCATION 2 (SN 016-1045)**


CONNECTOR RAMP
FROM E/B I-55 (STEVENS ON EXPY)
TO S/B US 41 (LAKE SHORE DRIVE)
OVER MCCORMICK PLACE PARKING LOT & I.C.C.R.


- LOCATION 3 (SN 016-1048)**


CONNECTOR RAMP
FROM NB US41 (LAKE SHORE DRIVE)
TO WB I-55 (STEVENS ON EXPY)
OVER US 41 (LAKE SHORE DRIVE)


- LOCATION 4 (SN 016-1052)**


CONNECTOR RAMP
FROM S/B US41 (LAKE SHORE DRIVE)
TO W/B I-55 (STEVENS ON EXPY)
OVER I.C.R.R.
AND MCCORMICK PLACE PARKING LOT

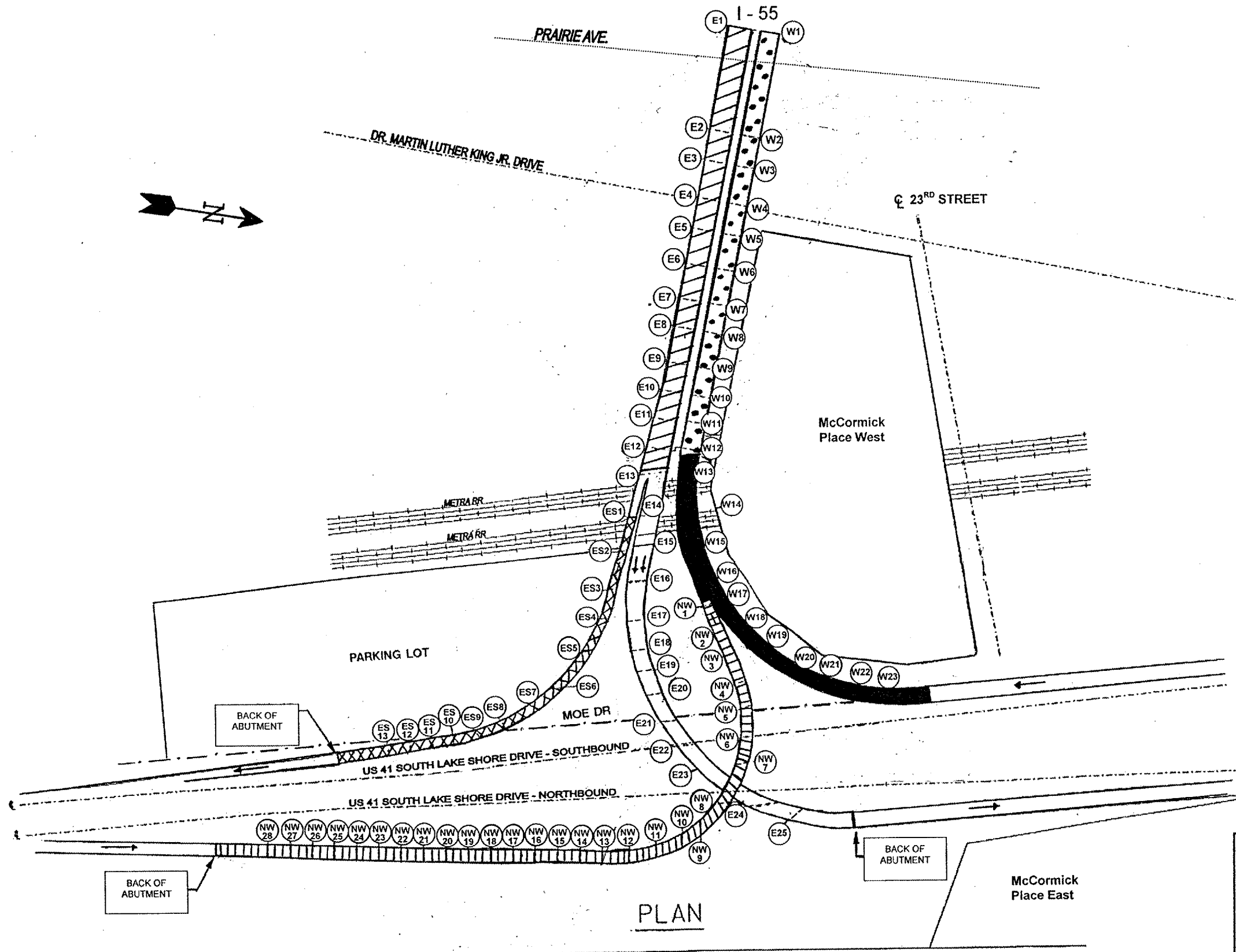

- LOCATION 5 (SN 016-1055)**

WB I-55 (STEVENS ON EXPY)
OVER PRAIRE AVE. TO I.C.R.R.


- LOCATION 6 (SN 016-1075)**

CONNECTOR RAMP
FROM E/B I-55 (STEVENS ON EXPY)
TO N/B US41 (LAKE SHORE DRIVE)
OVER US 41 (LAKE SHORE DRIVE)





PLAN

ILLINOIS DEPARTMENT OF TRANSPORTATION
I-55 AT US 41 (LAKE SHORE DR.)
GENERAL PLAN