

F.A.P. RTE.	SECTION	COUNTY	TOTAL SHEETS	SHEET NO.
305	1313.1 B	COOK	148	1

CONTRACT NO. 62878

STATE OF ILLINOIS
DEPARTMENT OF TRANSPORTATION
DIVISION OF HIGHWAYS

PROPOSED HIGHWAY PLANS

FAP ROUTE 305 (PALATINE ROAD) SECTION: 1313.1 B OVER IL 83 (ELMHURST ROAD) BRIDGE REPLACEMENT AND PAVEMENT RECONSTRUCTION PROJECT: ACNHF-0305(035) COOK COUNTY C-91-064-05

FOR INDEX OF SHEETS, SEE SHEET NO. 2

DESIGN DESIGNATION

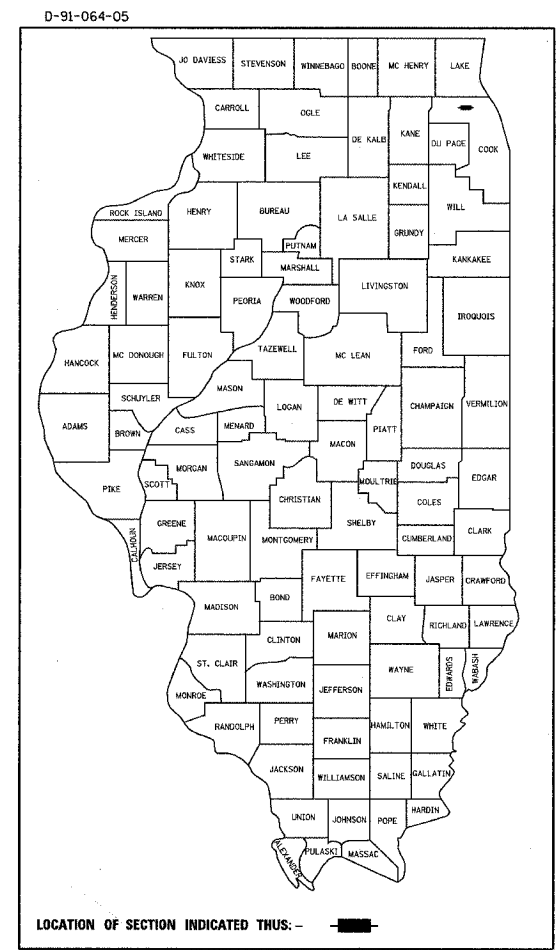
PALATINE ROAD - 5400 (20) ARTERIAL 10.14 (BIT-20)
IL-83 - 2708 (30) ARTERIAL 9.04 (PCC-30)

TRAFFIC DATA

2020 ADT = 54,000 - PALATINE ROAD
2020 ADT = 26,000 - ELMHURST ROAD

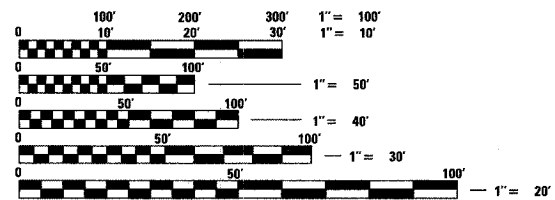
POSTED SPEED LIMIT

PALATINE MAINLINE (W OF R.R.) - 55 MPH
FRONTAGE ROADS - 30 MPH
ELMHURST ROAD - 40 MPH



CONSULTANT SERVICES PROJECT MANAGER: MANAR NASHIF (847) 705-4523

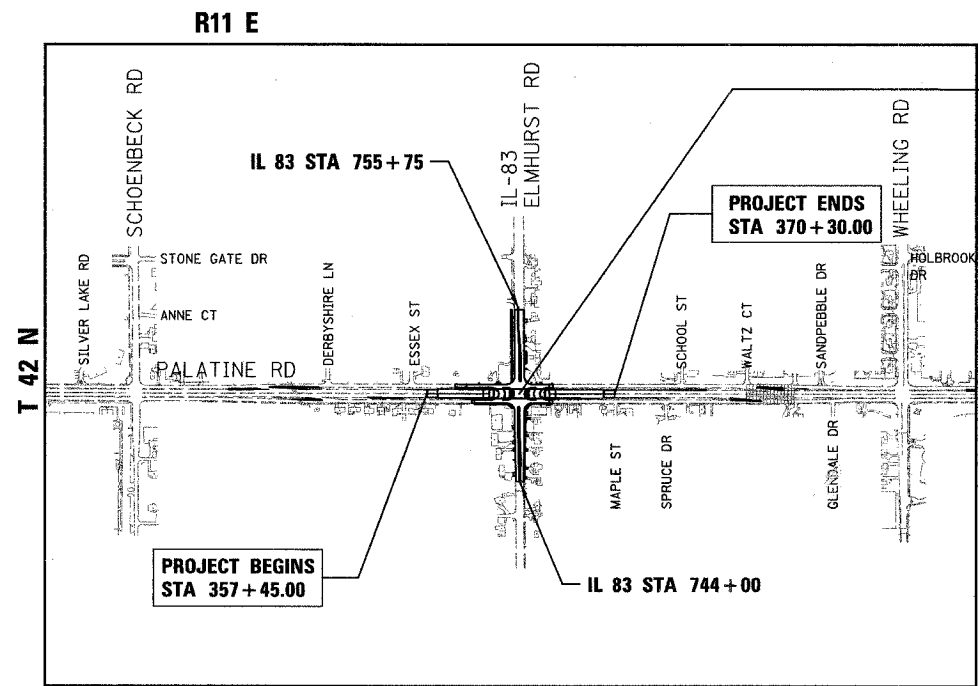
PROJECT LOCATED IN CITY OF PROSPECT HEIGHTS



FULL SIZE PLANS HAVE BEEN PREPARED USING STANDARD ENGINEERING SCALES, REDUCED SIZED PLANS WILL NOT CONFORM TO STANDARD SCALES, IN MAKING MEASUREMENTS ON REDUCED PLANS, THE ABOVE SCALES MAY BE USED.

J.U.L.I.E.
JOINT UTILITY LOCATION INFORMATION FOR EXCAVATION
1-800-892-0123

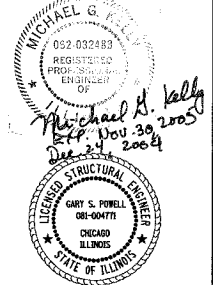
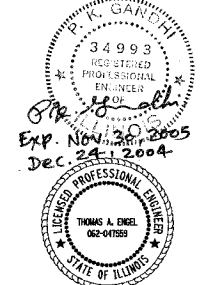
CONTRACT NO. 62878



PALATINE ROAD OVER IL 83
PALATINE ROAD STA 363+77,
IL-83 STA 750+00,
STRUCTURE NO 016-2812 (PROP.)
REMOVE EXISTING STRUCTURE (016-1051)
AND CONSTRUCT 3 SPAN STEEL PLATE GIRDER BRIDGE ON NEW SUBSTRUCTURE.

RECONSTRUCT IL-83 FROM STA 744+00 TO STA 755+75.

RECONSTRUCT FRONTAGE ROADS THROUGHOUT THE INTERCHANGE AND INCIDENTAL WORK



Thomas Engel
THOMAS A. ENGEL, P.E.
IL. LIC. NO. 062-017559
EXP. Nov 30, 2005
DATE Dec 24, 2004

Gary S. Powell
GARY S. POWELL, S.E.
IL. LIC. NO. 081-004771
EXP. 11-30-2006
DATE 12-24-2004

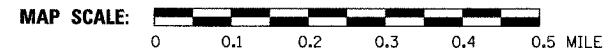
STATE OF ILLINOIS
DEPARTMENT OF TRANSPORTATION
DIVISION OF HIGHWAYS

SUBMITTED December 16, 2004
Diana O'Keefe/AP
DISTRICT ENGINEER

February 4, 2005
Mike Steo/B
ENGINEER OF DESIGN AND ENVIRONMENT

February 4, 2005
Victor Moderski/B
DIRECTOR, DIVISION OF HIGHWAYS

GROSS LENGTH OF IMPROVEMENT = 1285 LIN.FT. (= 0.243 MILES)
NET LENGTH OF IMPROVEMENT = 1285 LIN.FT. (= 0.243 MILES)



PRINTED BY THE AUTHORITY OF THE STATE OF ILLINOIS

1378 PALATINE1313.1B_05_01.dwg 12/16/04 08:33:50 AM