

F.A.P. RTE.	SECTION	COUNTY	TOTAL SHEETS	SHEET NO.
305	1313.1 B	COOK	193	24

CONTRACT NO. 62878

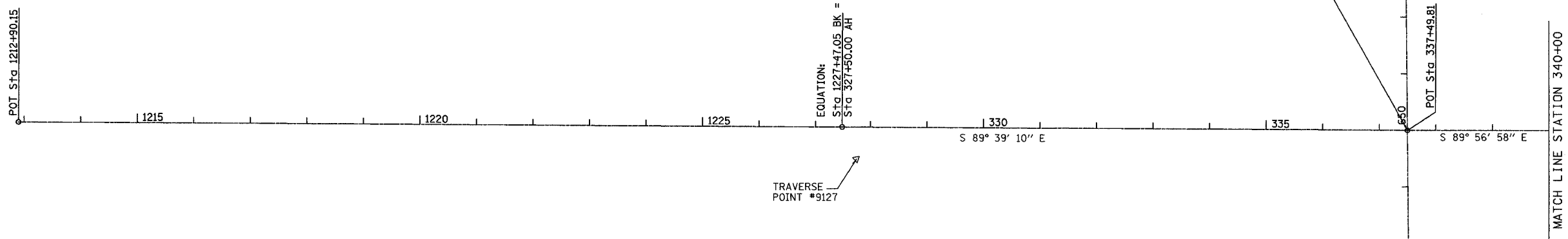
BM19P CHISELED "L" IN N. SIDE OF CONC LIGHT FND. BASE LOCATED ON THE SOUTH SIDE OF THE E. BND FRONTAGE RD +/- 200 FT WEST OF SCHOENBECK RD ELEV = 673.67

BM20P CHISELED "L" IN S.E. CORNER OF CONC. TRAFFIC CONTROL BOX BASE LOCATED @ THE N.E. CORNER OF PALATINE RD & SCHOENBECK RD ELEV = 675.59

STA 337+49.81
 @ PROP PALATINE ROAD =

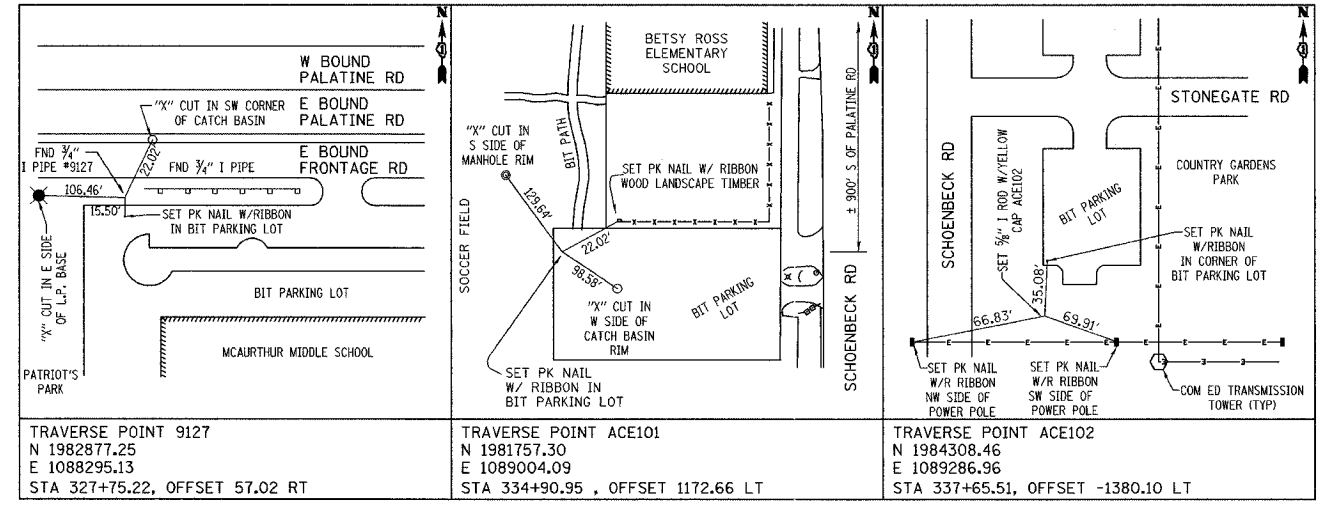
STA 650+00.00
 @ EXIST & PROP SCHOENBECK ROAD

N 1,982,928.369
 E 1,089,270.049



TRAVERSE POINT #9127

TRAVERSE POINT #ACE 101



TRAVERSE POINT TIE DIAGRAMS
 (NOT TO SCALE)

REVISIONS	
NAME	DATE

ILLINOIS DEPARTMENT OF TRANSPORTATION
 PALATINE ROAD OVER IL 83 (ELMHURST RD.)

**PALATINE ROAD
 ALIGNMENT AND TIE PLAN**

SCALE: 1"=100'
 DATE 12/04

DRAWN BY ACE/CAD
 CHECKED BY TAE

AMERICAN
 CONSULTING ENGINEERS

...:\N78\PALATINE\1010101_01.rvt 12/21/2004 02:12:45 PM