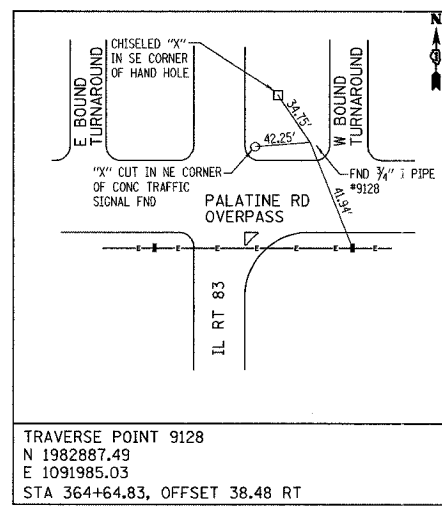
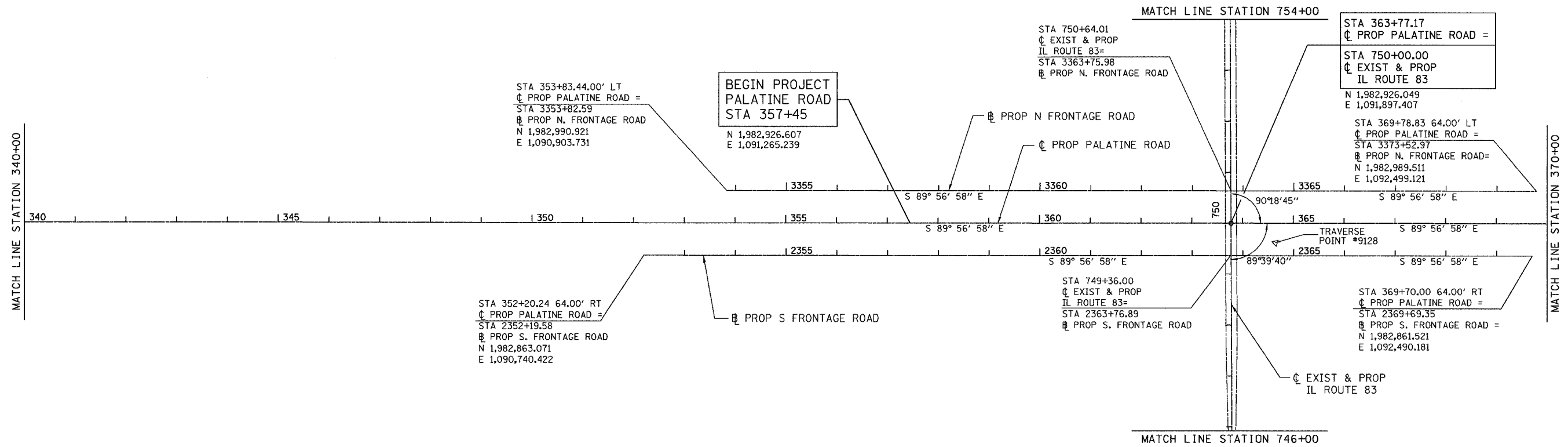


- BM21P CHISELED "X" IN N.W. BOLT OF "SCHOENBECK RD EXIT" SIGN LOCATED ON THE N. SIDE OF PALATINE RD & WEST OF ELMHURST RD
ELEV = 664.44
- ACE1 CHISELED "I" IN SOUTH SIDE OF CONC. CANTILEVER TRAFFIC SIGNAL FND LOCATED @ THE N.E. CORNER OF ELMHURST RD & THE E. BND PALATINE FRONTAGE RD
ELEV = 662.25
- BM22P CHISELED "X" IN THE S.W. BOLT OF THE "WHEELING EXIT" SIGN LOCATED ON THE S. SIDE OF PALATINE RD EAST OF ELMHURST RD
ELEV = 660.54
- TBMA CHISELED "I" IN N. SIDE OF CONC. TRAFFIC SIGNAL & LIGHTPOLE (LP# ATB3) LOCATED @ THE S.W. CORNER OF WHEELING RD AND THE E. BND PALATINE FRONTAGE RD
ELEV = 655.60
- BM211E CCHD BM FND IN N.W. CORNER OF THE FRONTAGE RD BRIDGE OVER PALATINE RD +/- 2000' E. OF WHEELING RD
ELEV = 655.02



TRAVERSE POINT 9128
 N 1982887.49
 E 1091985.03
 STA 364+64.83, OFFSET 38.48 RT

TRAVERSE POINT TIE DIAGRAMS
(NOT TO SCALE)

REVISIONS	
NAME	DATE

ILLINOIS DEPARTMENT OF TRANSPORTATION
 PALATINE ROAD OVER IL 83 (ELMHURST RD.)

**PALATINE ROAD
 ALIGNMENT AND TIE PLAN**

SCALE: 1"=100'
 DATE 12/04

DRAWN BY ACE/CAD
 CHECKED BY TAE

I:\projects\palatine\palatine_02.dwg 12/01/2004 02:15:00 PM