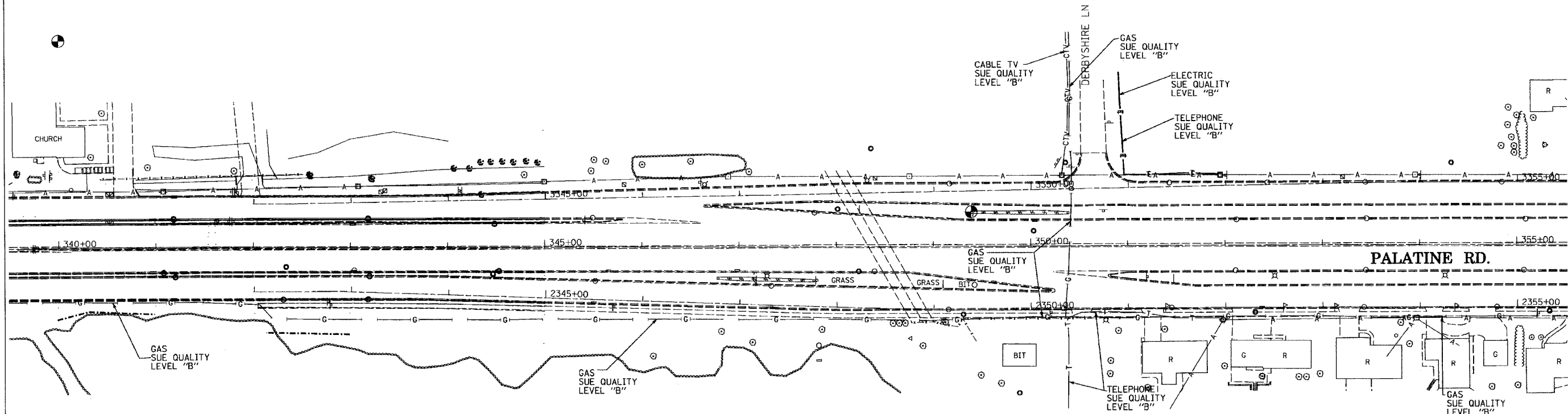


F.A. RTE.	SECTION	COUNTY	TOTAL SHEETS	SHEET NO.
305	1313,1415,1516	Cook	193	75
STA. 339+50		TO STA. 355+52		
FED. ROAD DIST. NO.		ILLINOIS FED. AID PROJECT		


CONTRACT NO. 62878



TBE GROUP, INC.
 CIVIL ENGINEERING * TRANSPORTATION * ENVIRONMENTAL
 * PLANNING * UTILITY ENGINEERING * LOCATING
 SOUTHERN REGION: FL, GA, SC, NC
 NORTHERN REGION: IL, IN, MI, OH, MD, NJ, NY
 PA, VA, CANADA
 WESTERN REGION: AZ, NV, NM, TX, CA, OR, UT, WA
 IL09500107, IL09500112, IL09500163
 TBE SUE PAGE NO: 6 of 22
 Signature *Sandra S. Jones*
 SUE Quality Level "A" : Test Holes
 SUE Quality Level "B" : Designating

—T—T—T—	TELEPHONE
—W—W—W—	WATER
—G—G—G—	GAS
—CTV—CTV—CTV—	CABLE TELEVISION
—FO—FO—FO—	FIBER OPTIC
—E—E—E—	ELECTRIC

Utilities shown on these plans as depicted in the legend have been investigated by TBE Group, Inc in accordance with SUE Industry Standards as of 5/08/03.
 All other information shown has been provided to TBE Group, Inc by others.


 205 W. WACKER DRIVE
 SUITE 1020
 CHICAGO, IL 60606
 (312) 704-1970

REVISIONS	
NAME	DATE

ILLINOIS DEPARTMENT OF TRANSPORTATION
 SUE Investigation of Underground Utilities
 IPalatine Road West of IL. RT. 83 to
 IL RT. 21 in Cook County.
 Contract No. 60789
 SCALE : 1" = 50'
 SQL "B" DATE : 5/08/03
 DRAWN BY : JAC
 CHECKED BY :