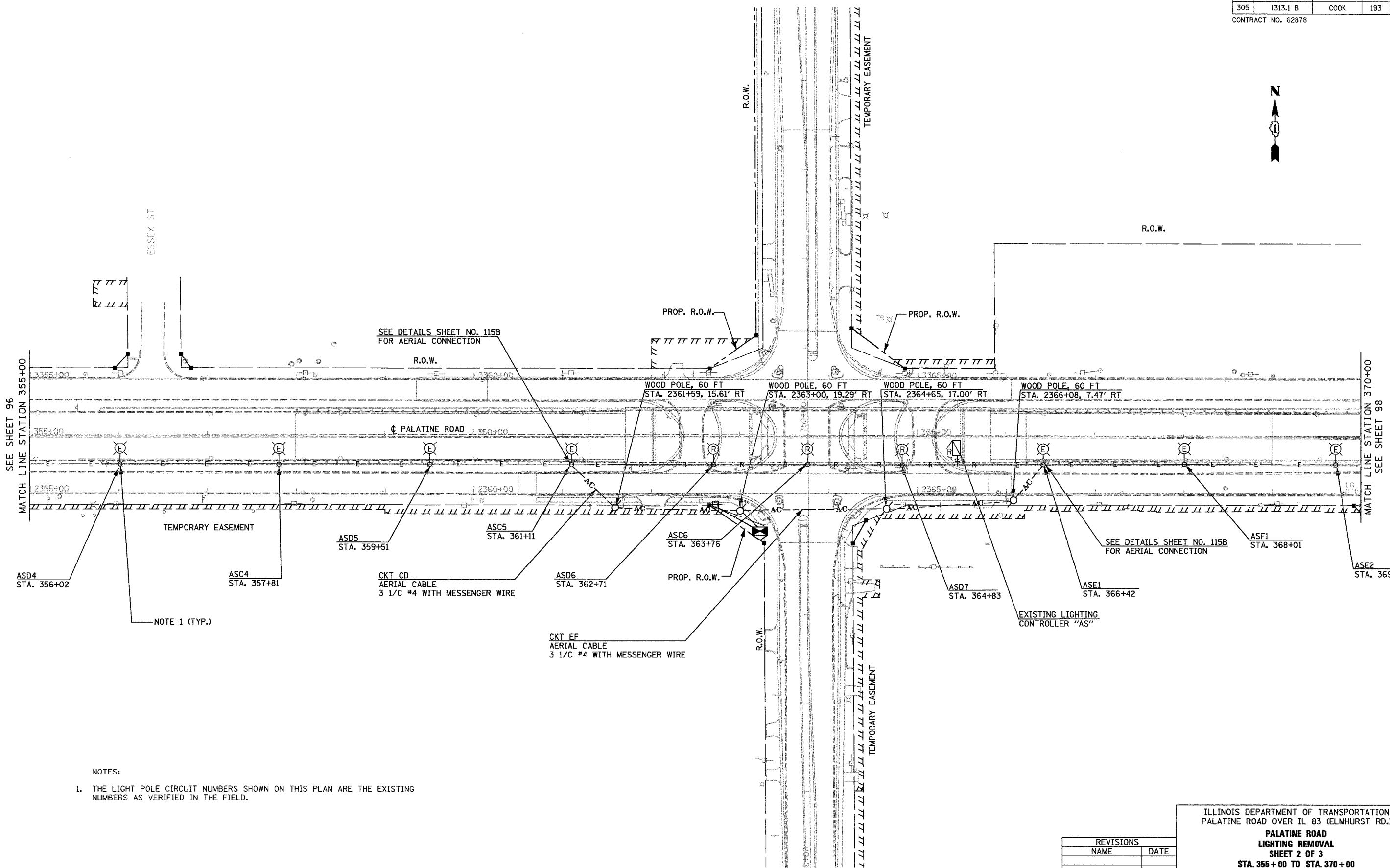


F.A.P. RTE.	SECTION	COUNTY	TOTAL SHEETS	SHEET NO.
305	1313.1 B	COOK	193	97

CONTRACT NO. 62878



- NOTES:
1. THE LIGHT POLE CIRCUIT NUMBERS SHOWN ON THIS PLAN ARE THE EXISTING NUMBERS AS VERIFIED IN THE FIELD.

**GO** GANDHI AND ASSOCIATES, INC.  
 ENGINEERS AND PLANNERS  
 6035 N. NORTHWEST HIGHWAY  
 SUITE 306  
 CHICAGO, ILLINOIS 60631 TEL: (773) 774-5900

REVISIONS	
NAME	DATE

ILLINOIS DEPARTMENT OF TRANSPORTATION  
 PALATINE ROAD OVER IL 83 (ELMHURST RD.)  
**PALATINE ROAD**  
**LIGHTING REMOVAL**  
**SHEET 2 OF 3**  
**STA. 355+00 TO STA. 370+00**

SCALE: 1" = 50'  
 DATE: 12/21/2004

DRAWN BY: MAE/KGP  
 CHECKED BY: PKG/BC

**AMERICAN**  
 CONSULTING ENGINEERS

I:\projects\62878\1313.1 B\palat\115b\_removal.dgn  
 21 DEC 2004  
 14:58:46