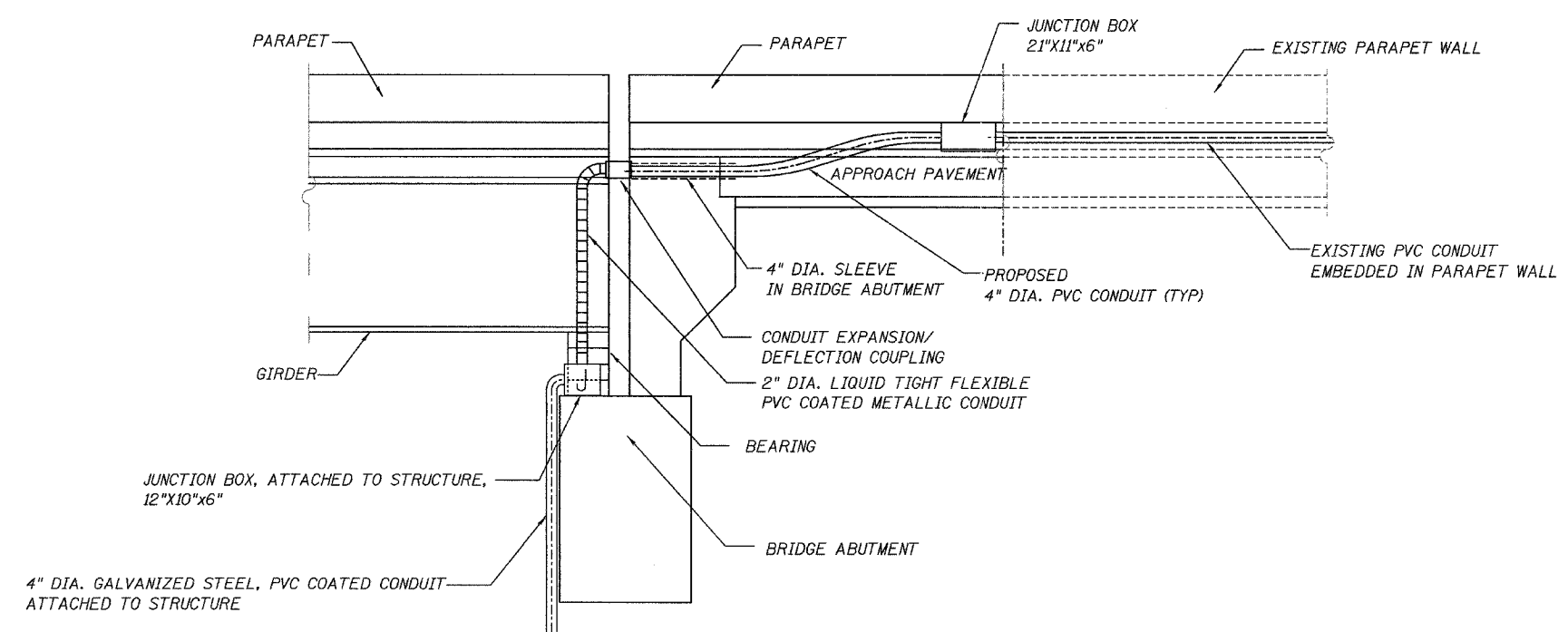
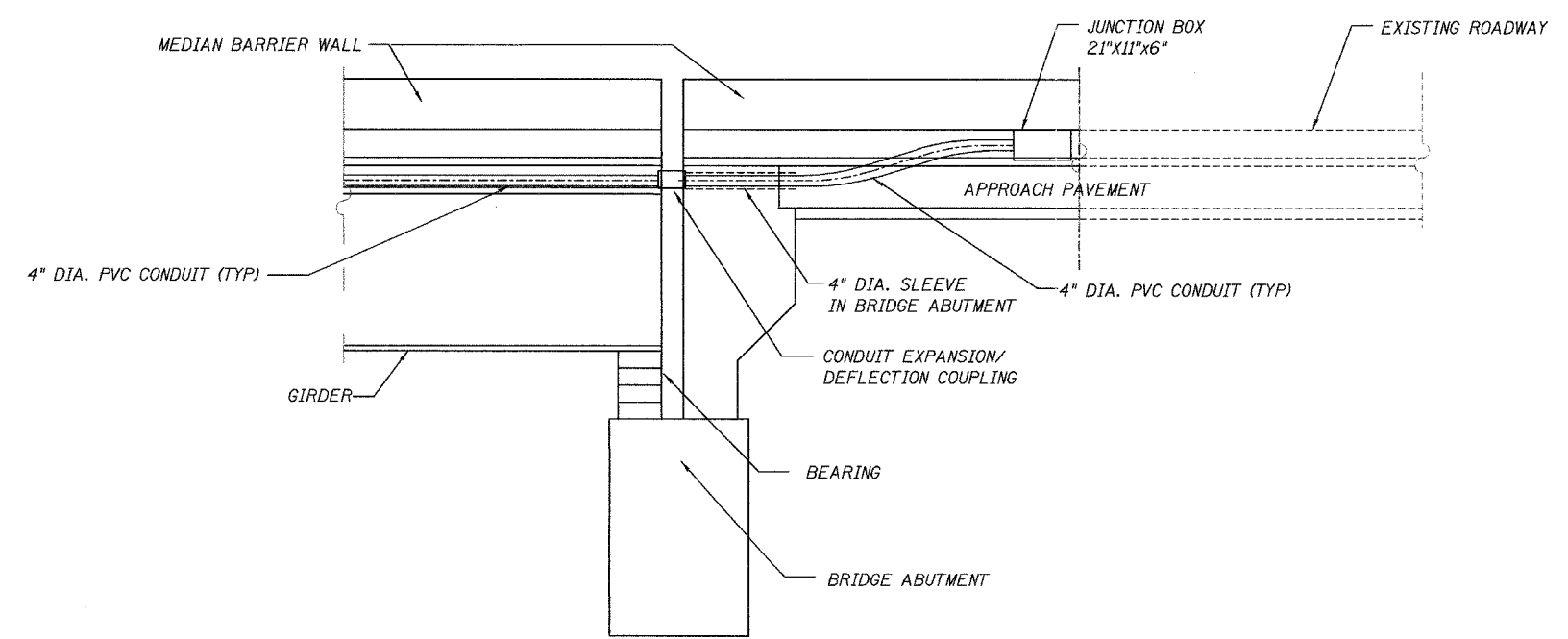


F.A.P. RTE.	SECTION	COUNTY	TOTAL SHEETS	SHEET NO.
305	1313.1 B	COOK	193	115A

CONTRACT NO. 62878



**ELEVATION-PARAPET WALL**  
NOT TO SCALE



**ELEVATION- MEDIAN BARRIER WALL**  
NOT TO SCALE

REVISIONS	
NAME	DATE

ILLINOIS DEPARTMENT OF TRANSPORTATION  
PALATINE ROAD OVER IL 83 (ELMHURST RD.)

**PARAPET WALL AND  
MEDIAN BARRIER WALL  
RACEWAY TRANSACTION DETAILS**

SCALE: NONE      DRAWN BY: MAE/KGP  
DATE: 12/21/2004      CHECKED BY: PKG/BC

**AMERICAN**  
CONSULTING ENGINEERS

**GA** GANDHI AND ASSOCIATES, INC.  
ENGINEERS AND PLANNERS  
6035 N. NORTHWEST HIGHWAY  
SUITE 305  
CHICAGO, ILLINOIS 60631 TEL: (773) 774-5910