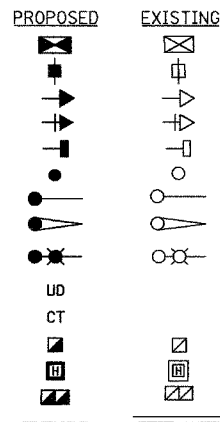
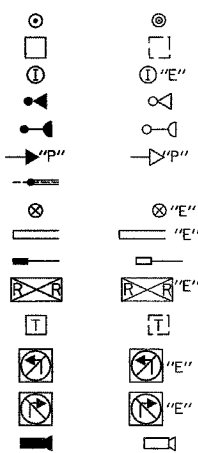


**TRAFFIC SIGNAL LEGEND**

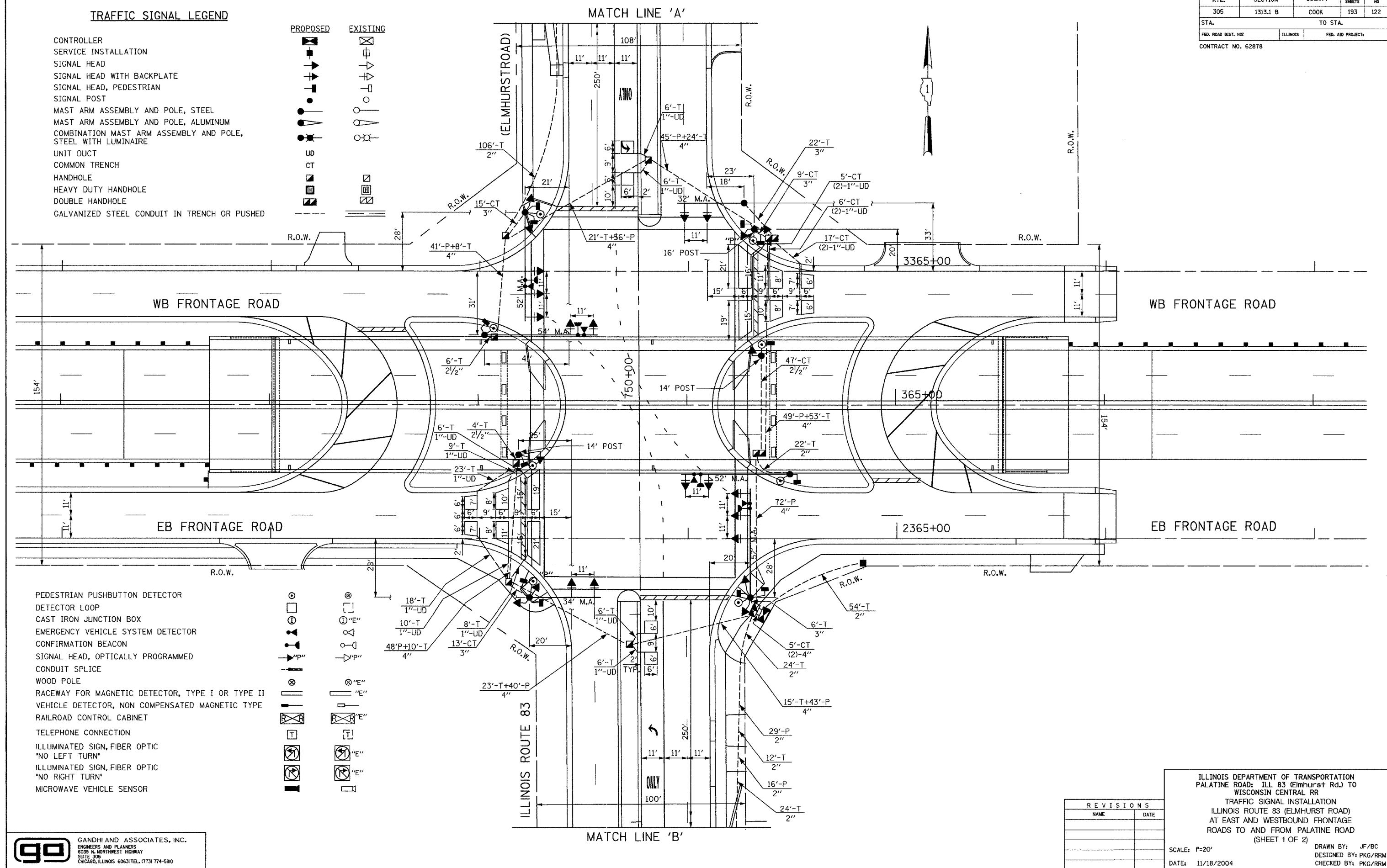
- CONTROLLER
- SERVICE INSTALLATION
- SIGNAL HEAD
- SIGNAL HEAD WITH BACKPLATE
- SIGNAL HEAD, PEDESTRIAN
- SIGNAL POST
- MAST ARM ASSEMBLY AND POLE, STEEL
- MAST ARM ASSEMBLY AND POLE, ALUMINUM
- COMBINATION MAST ARM ASSEMBLY AND POLE, STEEL WITH LUMINAIRE
- UNIT DUCT
- COMMON TRENCH
- HANDHOLE
- HEAVY DUTY HANDHOLE
- DOUBLE HANDHOLE
- GALVANIZED STEEL CONDUIT IN TRENCH OR PUSHED



- PEDESTRIAN PUSHBUTTON DETECTOR
- DETECTOR LOOP
- CAST IRON JUNCTION BOX
- EMERGENCY VEHICLE SYSTEM DETECTOR
- CONFIRMATION BEACON
- SIGNAL HEAD, OPTICALLY PROGRAMMED
- CONDUIT SPLICE
- WOOD POLE
- RACEWAY FOR MAGNETIC DETECTOR, TYPE I OR TYPE II
- VEHICLE DETECTOR, NON COMPENSATED MAGNETIC TYPE
- RAILROAD CONTROL CABINET
- TELEPHONE CONNECTION
- ILLUMINATED SIGN, FIBER OPTIC "NO LEFT TURN"
- ILLUMINATED SIGN, FIBER OPTIC "NO RIGHT TURN"
- MICROWAVE VEHICLE SENSOR



|                     |          |          |                  |          |
|---------------------|----------|----------|------------------|----------|
| RTE.                | SECTION  | COUNTY   | TOTAL SHEETS     | SHEET NO |
| 305                 | 1313.1 B | COOK     | 193              | 122      |
| STA.                |          | TO STA.  |                  |          |
| FED. ROAD DIST. NO. |          | ILLINOIS | FED. AID PROJECT |          |
| CONTRACT NO. 62878  |          |          |                  |          |



| REVISIONS |      |
|-----------|------|
| NAME      | DATE |
|           |      |
|           |      |
|           |      |
|           |      |

ILLINOIS DEPARTMENT OF TRANSPORTATION  
 PALATINE ROAD: ILL 83 (Elmhurst Rd.) TO WISCONSIN CENTRAL RR  
 TRAFFIC SIGNAL INSTALLATION  
 ILLINOIS ROUTE 83 (ELMHURST ROAD)  
 AT EAST AND WESTBOUND FRONTAGE  
 ROADS TO AND FROM PALATINE ROAD  
 (SHEET 1 OF 2)

SCALE: 1"=20'  
 DATE: 11/18/2004

DRAWN BY: JF/BC  
 DESIGNED BY: PKG/RRM  
 CHECKED BY: PKG/RRM

**go** GANDHI AND ASSOCIATES, INC.  
 ENGINEERS AND PLANNERS  
 6035 N. NORTHWEST HIGHWAY  
 SUITE 306  
 CHICAGO, ILLINOIS 60631 TEL: (773) 774-5910