

STATE OF ILLINOIS  
DEPARTMENT OF TRANSPORTATION

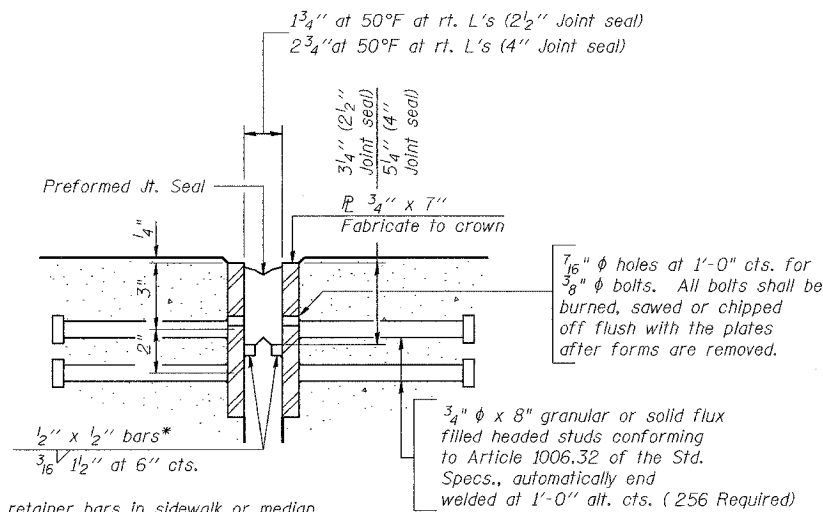
ROUTE NO. FAP 305	SECTION *	COUNTY Cook	DATE 193	SHEET NO. 142	SHEET TOTAL 37 SHEETS
-------------------------	--------------	----------------	-------------	------------------	--------------------------

Contract No. 62878 \*1313.1 B

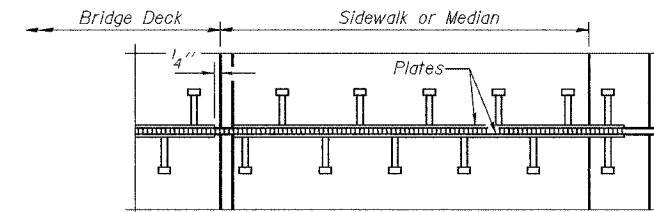
**GENERAL NOTES**

Furnish steel plates in segments of 20 feet maximum length. Maximum space between installed segments shall be 3/16". Seal space with silicone sealant suitable for structural steel.

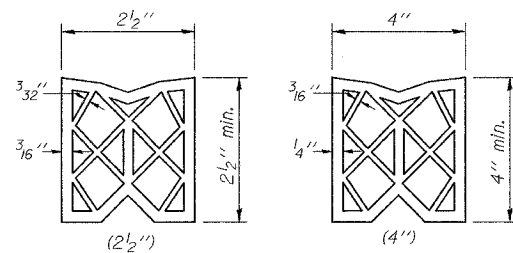
Bridge Joint System (Expansion)		
Design Movement	Required Preformed Joint Seal Size	Required Strip Seal Rated movement
1"	2 1/2"	1"
1 5/8"	4"	2"



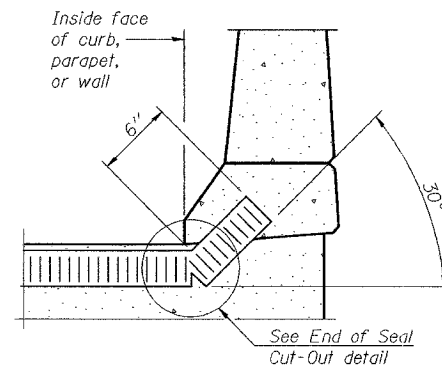
**SECTION THRU EXPANSION JOINT**  
(2 1/2" and 4" joint seals)



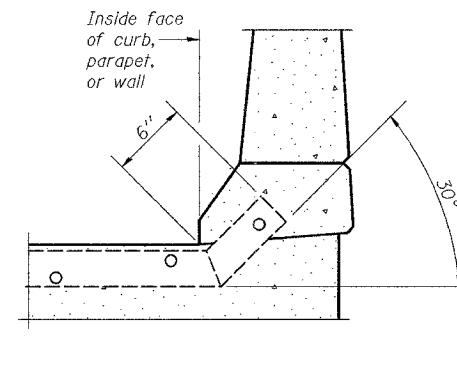
**PLAN AT SIDEWALK OR MEDIAN**



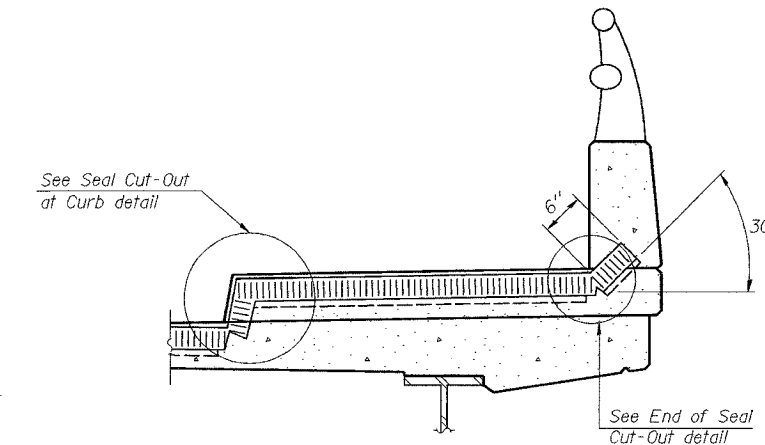
**PREFORMED JOINT SEAL**



**AT CURB, PARAPET, OR WALL**  
(Showing seal)



**AT CURB, PARAPET, OR WALL**  
(Showing plate)



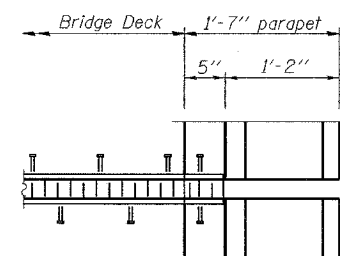
**AT SIDEWALK OR MEDIAN\***  
(Showing plate and seal)

\* Shorter plates with a single row of studs at 12" centers may be necessary on medians which are shallower than 9". See manufacturer's recommendation.

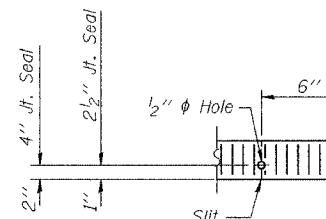
**BILL OF MATERIAL**

Item	Unit	Total
Bridge Joint System (Expansion), 1 5/8"	foot	63

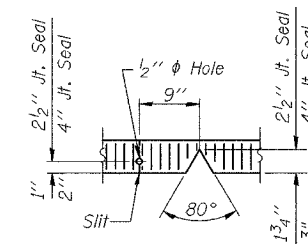
**BRIDGE JOINT SYSTEM - EXPANSION (1 OF 2)**  
**(PREFORMED JOINT SEAL)**  
**PALATINE ROAD OVER**  
**IL. RT. 83 (ELMHURST ROAD)**  
**F.A.P. RTE. 305 SECT. 1313.1 B**  
**COOK COUNTY**  
**STATION 363+77.17**  
**STRUCTURE NO. 016-2812**



**PLAN AT PARAPET**



**END OF SEAL CUT-OUT**



**SEAL CUT-OUT AT CURB**

DESIGNED	MJW
CHECKED	GAT
DRAWN	MJW
CHECKED	GAT

EJ-BJS 9-01-03