

STATE OF ILLINOIS  
DEPARTMENT OF TRANSPORTATION

ROUTE NO.	SECTION	COUNTY	DATE	SHEET	SHEET NO. 22
FAP 305	*	Cook	193	151	37 SHEETS

Contract No. 62878 \*1313.1 B

WEST ABUTMENT  
BILL OF MATERIAL

Bar	No.	Size	Length	Shape
h(E)	28	#5	34'-0"	—
h <sub>1</sub> (E)	4	#6	33'-5"	—
h <sub>2</sub> (E)	7	#4	33'-6"	—
h <sub>3</sub> (E)	42	#5	18'-7"	—
h <sub>4</sub> (E)	16	#4	18'-7"	—
h <sub>5</sub> (E)	6	#5	12'-10"	—
h <sub>6</sub> (E)	28	#5	31'-8"	—
h <sub>7</sub> (E)	4	#6	30'-8"	—
h <sub>8</sub> (E)	7	#4	31'-8"	—
n(E)	66	#6	5'-11"	—
n <sub>1</sub> (E)	126	#8	10'-2"	—
n <sub>2</sub> (E)	40	#5	5'-4"	—
n <sub>3</sub> (E)	78	#9	9'-6"	—
t(E)	132	#6	15'-6"	—
t <sub>1</sub> (E)	132	#9	17'-1"	—
t <sub>2</sub> (E)	79	#6	14'-2"	—
t <sub>3</sub> (E)	79	#9	14'-2"	—
u(E)	34	#5	10'-7"	—
u <sub>1</sub> (E)	40	#5	3'-2"	—
u <sub>2</sub> (E)	27	#5	6'-0"	—
v(E)	196	#6	17'-2"	—
v <sub>1</sub> (E)	66	#6	6'-6"	—
v <sub>2</sub> (E)	65	#5	8'-7"	—
v <sub>3</sub> (E)	64	#5	7'-0"	—
v <sub>4</sub> (E)	64	#5	4'-4"	—
v <sub>5</sub> (E)	64	#5	3'-7"	—
v <sub>6</sub> (E)	40	#5	19'-10"	—
v <sub>7</sub> (E)	78	#7	19'-10"	—
v <sub>8</sub> (E)	10	#6	3'-10"	—
w(E)	58	#8	15'-8"	—
w <sub>1</sub> (E)	58	#6	15'-8"	—
w <sub>2</sub> (E)	120	#8	21'-4"	—
w <sub>3</sub> (E)	120	#6	19'-11"	—
Reinforcement Bars, Epoxy Coated	Pound		52,900	
Concrete Structures	Cu. Yd.		327.8	
Bar Splicers	Each		53	
Structure Excavation	Cu. Yd.		2430.4	
Pipe Underdrains for Structures 4"	Foot		101	
Geocomposite Wall Drain	Sq. Yd.		77	
Pipe Drain 4"	Foot		16	

Notes:

Reinforcement bars designated (E) shall be epoxy coated.

Bars indicated thus 1 x 2-#5 etc. indicates 1 line of bars with 2 lengths per line.

All edges shall have standard 3/4" chamfers except as noted.

Four steps monolithically with cap.

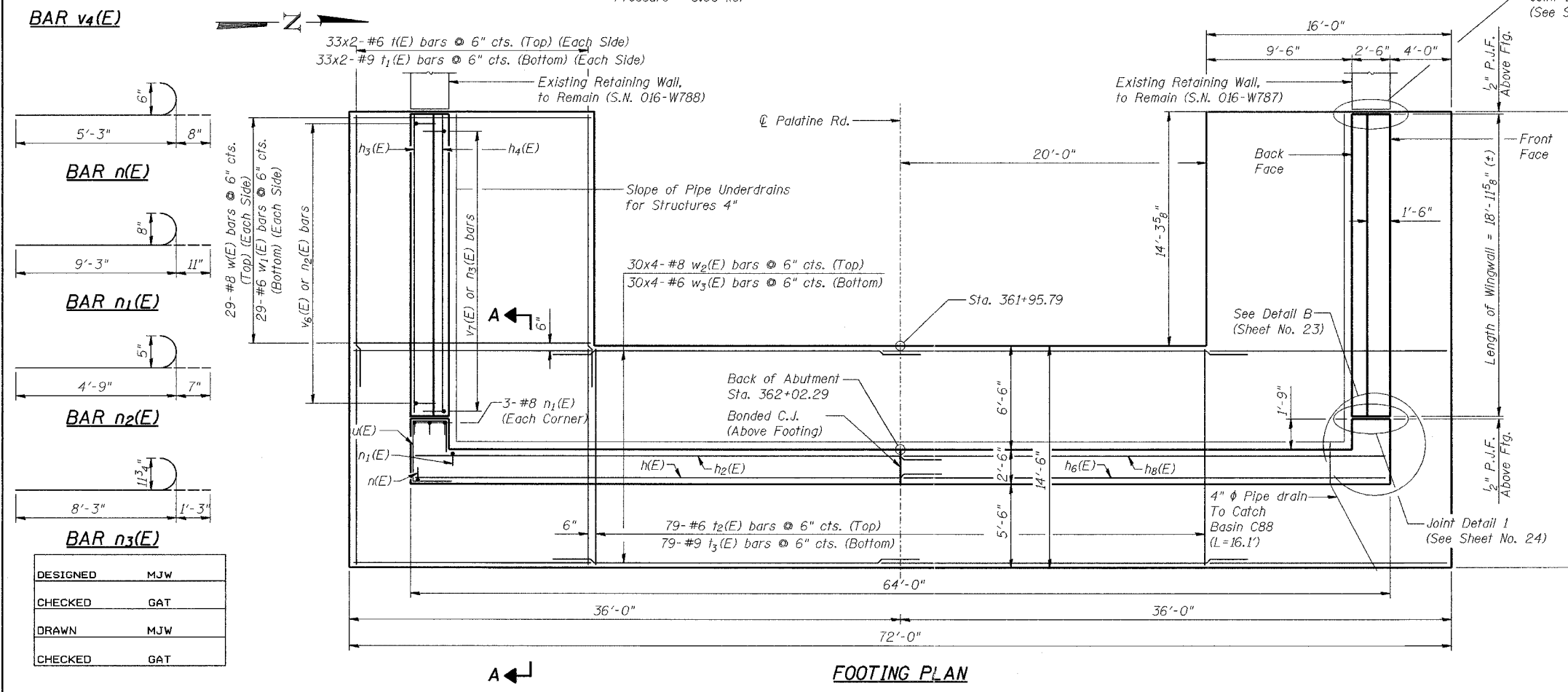
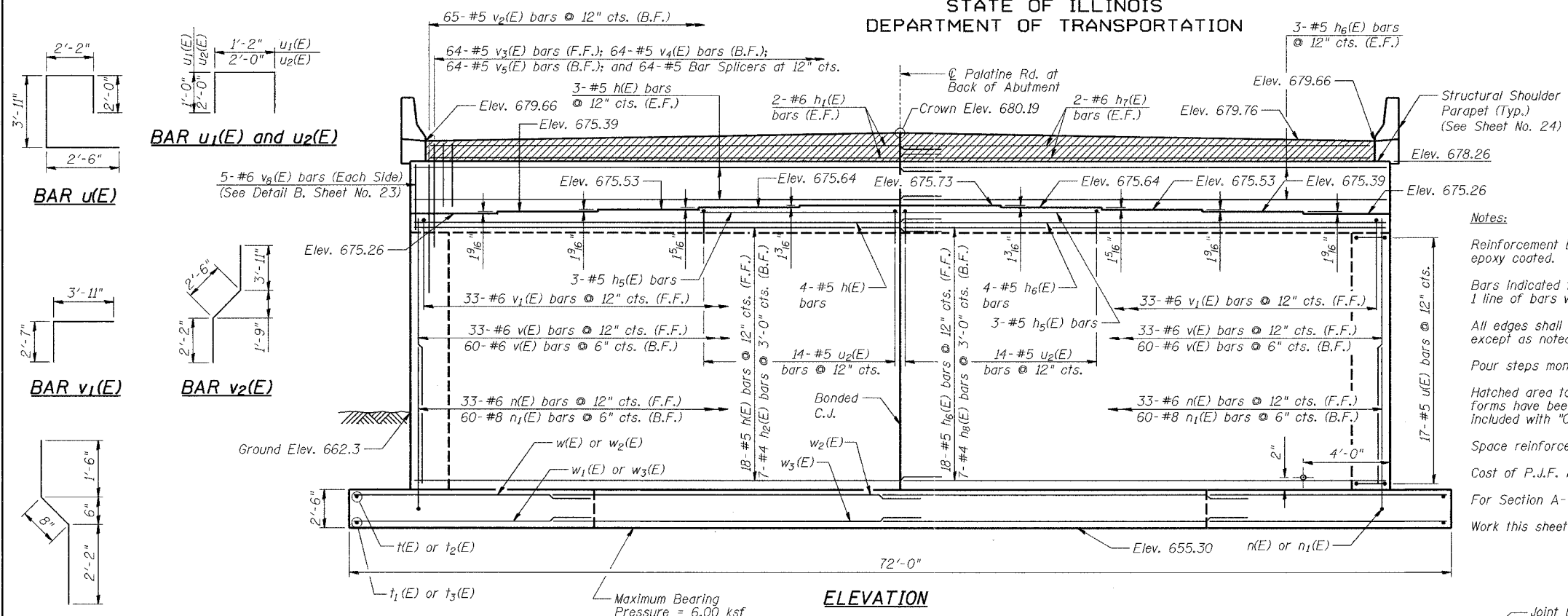
Hatched area to be poured after superstructure forms have been removed. Quantity of concrete included with "Concrete Superstructure".

Space reinforcement in cap to miss Anchor Bolts.

Cost of P.J.F. included with "Concrete Structures".

For Section A-A, see Sheet No. 23.

Work this sheet with Sheet No. 23 and No. 24.



MIN. BAR LAP

- #4 - 1'-8"
- #5 - 2'-2"
- #6 - 2'-7"
- #7 - 3'-5"
- #8 - 4'-6"
- #9 - 5'-9"

LEGEND

- E.F. = Each Face
- F.F. = Front Face
- B.F. = Back Face
- C.J. = Construction Joint

**WEST ABUTMENT**  
**PALATINE ROAD OVER**  
**IL. RT. 83 (ELMHURST ROAD)**  
**F.A.P. RTE. 305 SECT. 1313.1 B**  
**COOK COUNTY**  
**STATION 363+77.17**  
**STRUCTURE NO. 016-2812**