

STATE OF ILLINOIS  
DEPARTMENT OF TRANSPORTATION

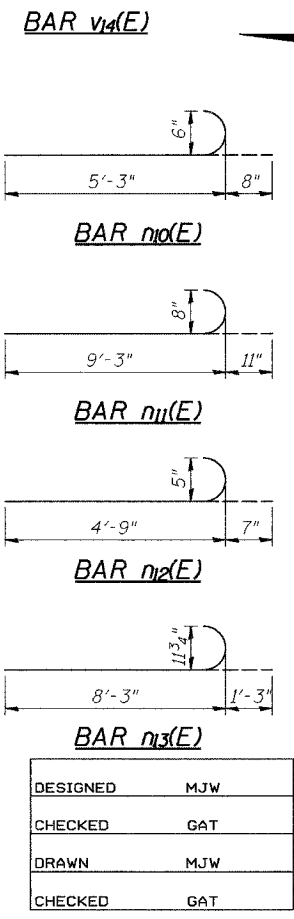
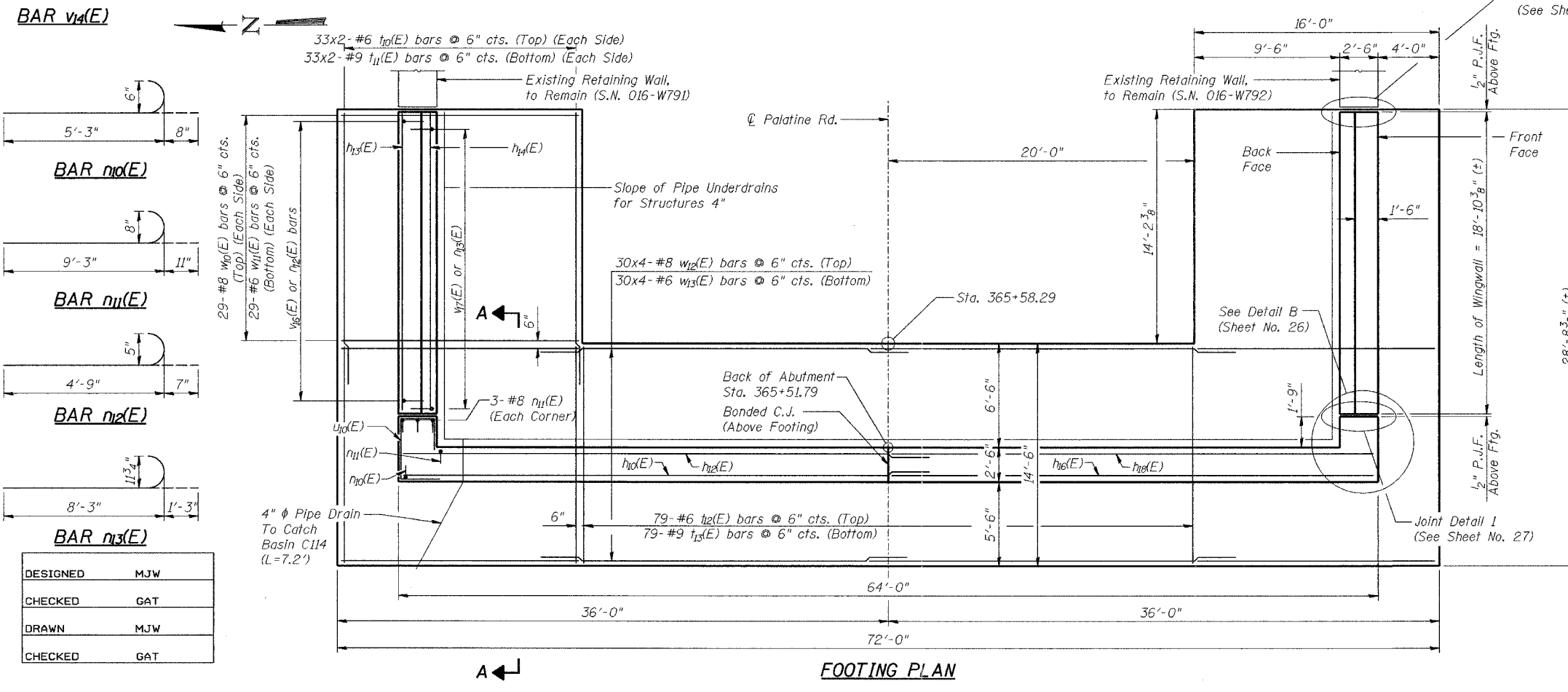
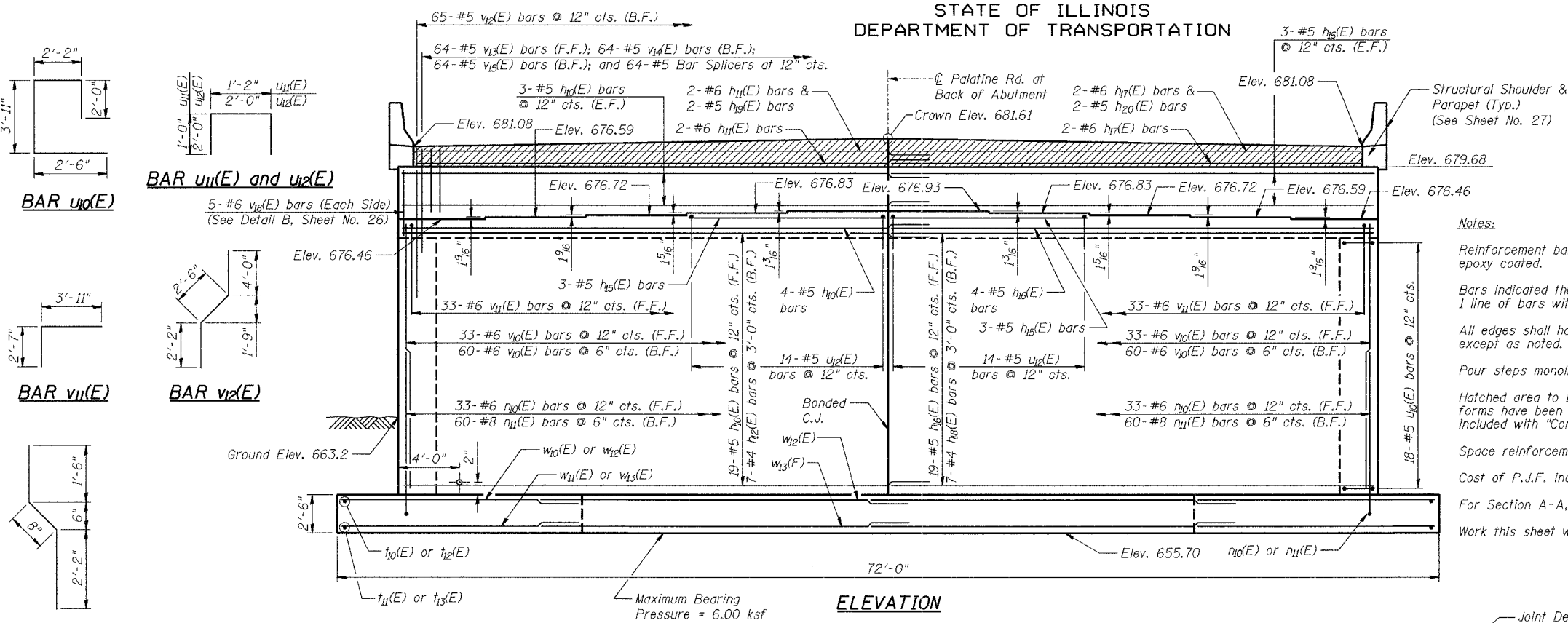
ROUTE NO.	SECTION	COUNTY	DATE	SHEET	SHEET NO. 25
FAP 305	*	Cook	193	154	37 SHEETS

Contract No. 62878 \*1313.1 B

**EAST ABUTMENT  
BILL OF MATERIAL**

Bar	No.	Size	Length	Shape
h <sub>10</sub> (E)	29	#5	34'-0"	—
h <sub>11</sub> (E)	4	#6	33'-5"	—
h <sub>12</sub> (E)	7	#4	33'-6"	—
h <sub>13</sub> (E)	44	#5	18'-6"	—
h <sub>14</sub> (E)	16	#4	18'-6"	—
h <sub>15</sub> (E)	6	#5	12'-0"	—
h <sub>16</sub> (E)	29	#5	31'-8"	—
h <sub>17</sub> (E)	4	#6	30'-8"	—
h <sub>18</sub> (E)	7	#4	31'-8"	—
h <sub>19</sub> (E)	2	#5	33'-0"	—
h <sub>20</sub> (E)	2	#5	30'-8"	—
h <sub>21</sub> (E)	66	#6	5'-11"	⌋
h <sub>22</sub> (E)	126	#8	10'-2"	⌋
h <sub>23</sub> (E)	40	#5	5'-4"	⌋
h <sub>24</sub> (E)	78	#9	9'-6"	⌋
h <sub>25</sub> (E)	132	#6	15'-6"	—
h <sub>26</sub> (E)	132	#9	17'-1"	—
h <sub>27</sub> (E)	79	#6	14'-2"	—
h <sub>28</sub> (E)	79	#9	14'-2"	—
u <sub>10</sub> (E)	36	#5	10'-7"	□
u <sub>11</sub> (E)	40	#5	3'-2"	□
u <sub>12</sub> (E)	28	#5	6'-0"	□
v <sub>10</sub> (E)	196	#6	17'-11"	—
v <sub>11</sub> (E)	66	#6	6'-6"	⌋
v <sub>12</sub> (E)	65	#5	8'-8"	⌋
v <sub>13</sub> (E)	64	#5	7'-3"	—
v <sub>14</sub> (E)	64	#5	4'-4"	⌋
v <sub>15</sub> (E)	64	#5	3'-7"	—
v <sub>16</sub> (E)	40	#5	21'-0"	—
v <sub>17</sub> (E)	78	#7	21'-0"	—
v <sub>18</sub> (E)	10	#6	3'-10"	—
w <sub>10</sub> (E)	58	#8	15'-8"	—
w <sub>11</sub> (E)	58	#6	15'-8"	—
w <sub>12</sub> (E)	120	#8	21'-4"	—
w <sub>13</sub> (E)	120	#6	19'-11"	—
Reinforcement Bars, Epoxy Coated	Pound		53,640	
Concrete Structures	Cu. Yd.		336.5	
Bar Splicers	Each		53	
Structure Excavation	Cu. Yd.		2572.4	
Pipe Underdrains for Structures 4"	Foot		101	
Geocomposite Wall Drain	Sq. Yd.		80	
Pipe Drains 4"	Foot		7	

Notes:  
Reinforcement bars designated (E) shall be epoxy coated.  
Bars indicated thus 1 x 2-#5 etc. indicates 1 line of bars with 2 lengths per line.  
All edges shall have standard 3/4" chamfers except as noted.  
Pour steps monolithically with cap.  
Hatched area to be poured after superstructure forms have been removed. Quantity of concrete included with "Concrete Superstructure".  
Space reinforcement in cap to miss Anchor Bolts.  
Cost of P.J.F. included with "Concrete Structures".  
For Section A-A, see Sheet No. 26.  
Work this sheet with Sheet No. 26 and No. 27.



**MIN. BAR LAP**

#4	1'-8"
#5	2'-2"
#6	2'-7"
#7	3'-5"
#8	4'-6"
#9	5'-9"

**LEGEND**

- E.F. = Each Face
- F.F. = Front Face
- B.F. = Back Face
- C.J. = Construction Joint

**EAST ABUTMENT  
PALATINE ROAD OVER  
IL. RT. 83 (ELMHURST ROAD)  
F.A.P. RTE. 305 SECT. 1313.1 B  
COOK COUNTY  
STATION 363+77.17  
STRUCTURE NO. 016-2812**