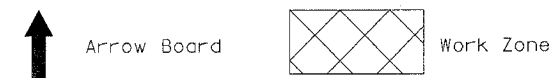
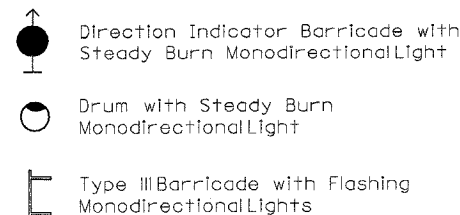
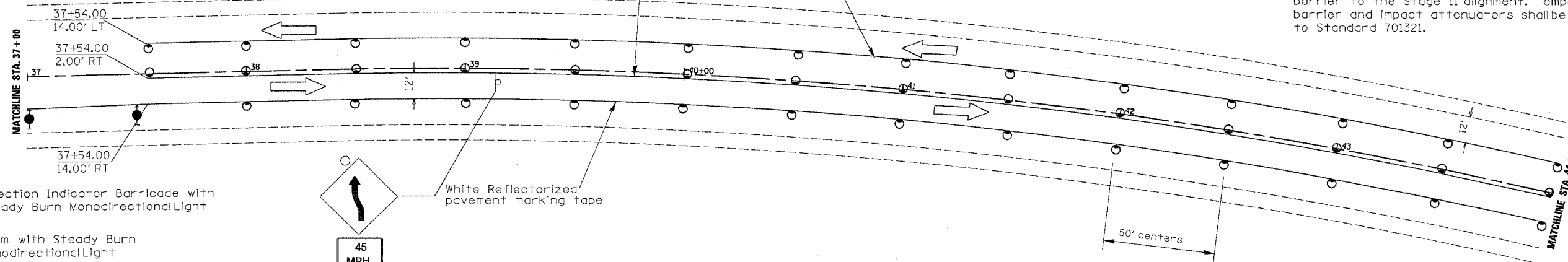
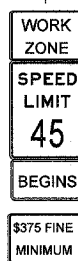
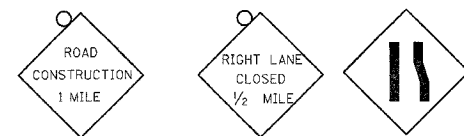
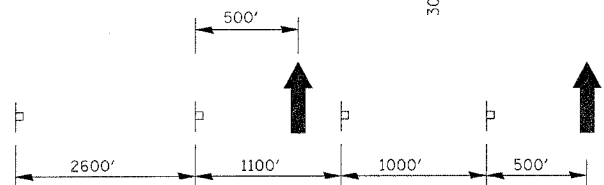
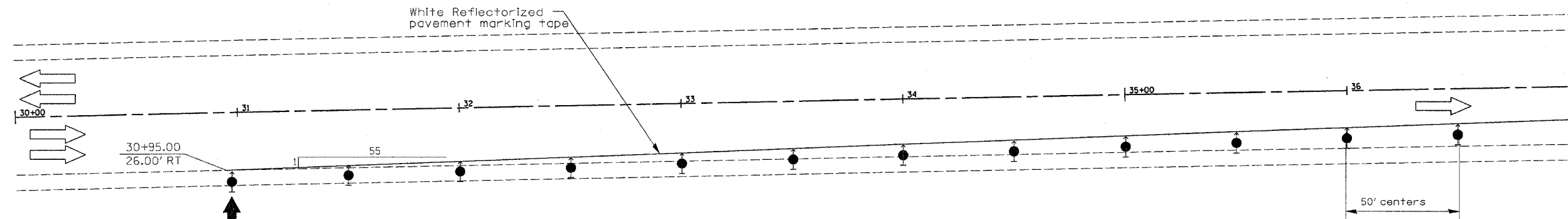


F.A. RTE.	SECTION	COUNTY	TOTAL SHEETS	SHEET NO.
5	19B-2-D	STEPHENSON	57	6
STA. 30+00.00		TO STA. 44+00.00		
FED. ROAD DIST. NO. 7		ILLINOIS FED. AID PROJECT		



STAGE I CONSTRUCTION

1. Setup and pay for according to Traffic Control and Protection Standard 701431. Temporary concrete barrier and impact attenuators shall be placed according to Standard 701321.
2. Shift traffic to Stage I traffic lanes.
3. Remove existing bridge deck, roadway, paved shoulder, and guardrail south of Stage I removal line.
4. Construct new bridge deck, guardrail, and pavement south of Stage I construction line.
5. Relocate Standard 701431 and relocate temporary concrete barrier and impact attenuators shall be placed according to Standard 701321.

REVISIONS	
NAME	DATE

ILLINOIS DEPARTMENT OF TRANSPORTATION
TRAFFIC MAINTENANCE
STAGE I

SCALE: VERT. NA
HORIZ. 1"=25'
DATE

DRAWN BY
CHECKED BY