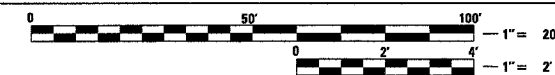


F.A. RTE.	SECTION	COUNTY	TOTAL SHEETS	SHEET NO.
5	198-2-D	STEPHENSON	57	16
STA. 58+00.00		TO STA. 63+00.00		
FED. ROAD DIST. NO. 7 ILLINOIS FED. AID PROJECT				



USGS DATUM: NGVD-1929

BENCH MARK

CHISELED "□" ON SOUTHEAST CORNER OF EXISTING STRUCTURE NO. SN089-0008
 STATION 57+13, 31.8' RT.
 ELEVATION = 763.329 FT

FLOYD & DARLENE NESEMEYER

REMOVAL OF EXISTING GUTTER INCIDENTAL TO PAVEMENT REMOVAL

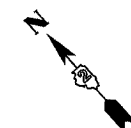
TIE INTO EXISTING TYPE A GUTTER

PROPOSED PAVEMENT CROSS-SLOPE

STATION	PROPOSED PAVEMENT CROSS-SLOPE
54+38.30	-4.50% RT +4.50% LT
54+56.00	-4.50% RT +4.50% LT
55+68.00	-2.00% RT
56+56.00	0.00% LT
57+45.40	-2.00% RT -2.00% LT
58+93.60	-2.00% LT
59+35.40	+3.13% RT -3.13% LT
59+90.00	+3.13% RT -3.13% LT

PI STA. = 68+45.48
 N = 2044040.92
 E = 2458203.30
 $\Delta = 38^{\circ} 10' 00''$
 R = 2,864.79'
 T = 991.09'
 L = 1,908.33'
 E = 166.59'
 e = 3.13%

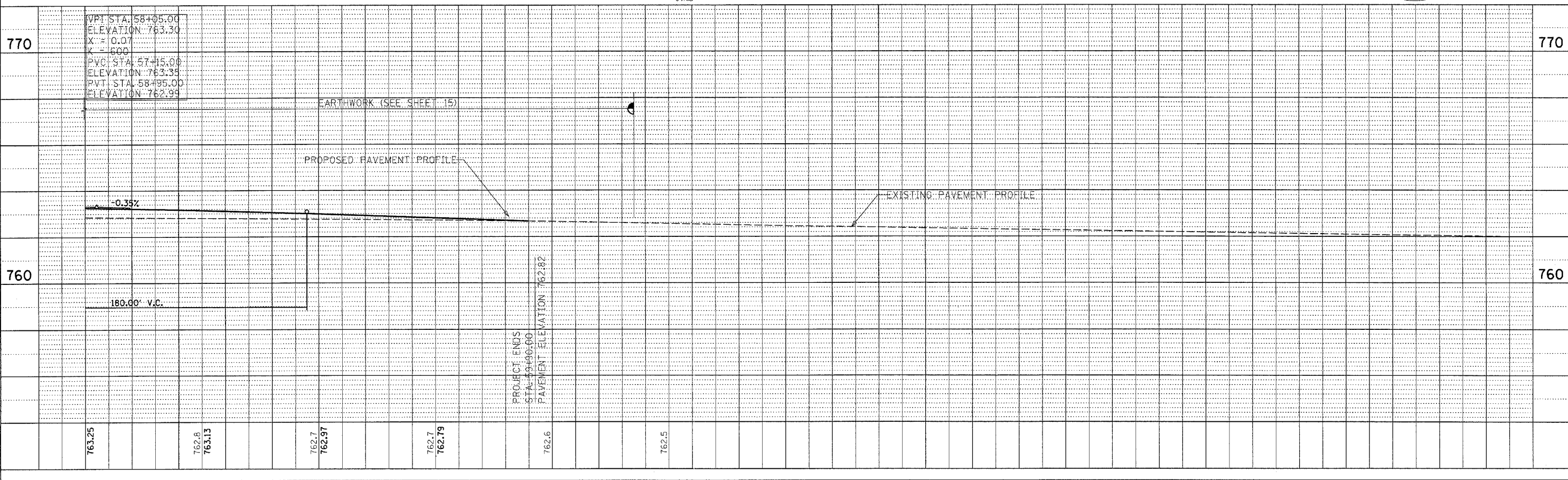
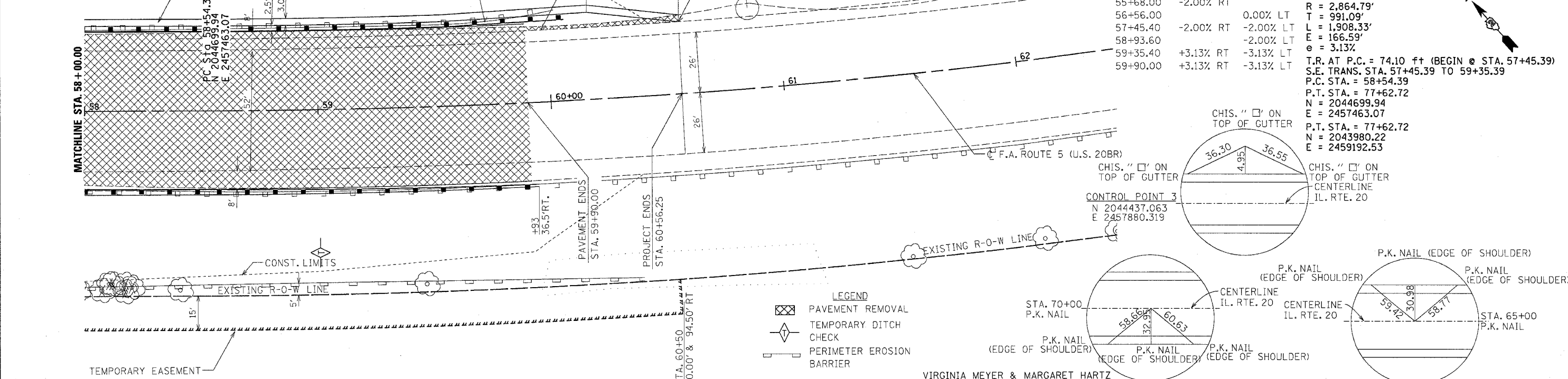
T.R. AT P.C. = 74.10 ft (BEGIN @ STA. 57+45.39)
 S.E. TRANS. STA. 57+45.39 TO 59+35.39
 P.C. STA. = 58+54.39
 P.T. STA. = 77+62.72
 N = 2044699.94
 E = 2457463.07
 P.T. STA. = 77+62.72
 N = 2043980.22
 E = 2459192.53



DATE	BY
08/26/24	2004

PLAN

SURVEYED BY: _____
 NOTE BOOK NO.: _____
 ALIGNED AND CHECKED BY: _____
 CADD FILE NAME: _____
 NO.: _____



DATE	BY

PROFILE

SURVEYED BY: _____
 NOTE BOOK NO.: _____
 GRADES CHECKED BY: _____
 STRUCTURE NOTATIONS CHFD: _____
 NO.: _____