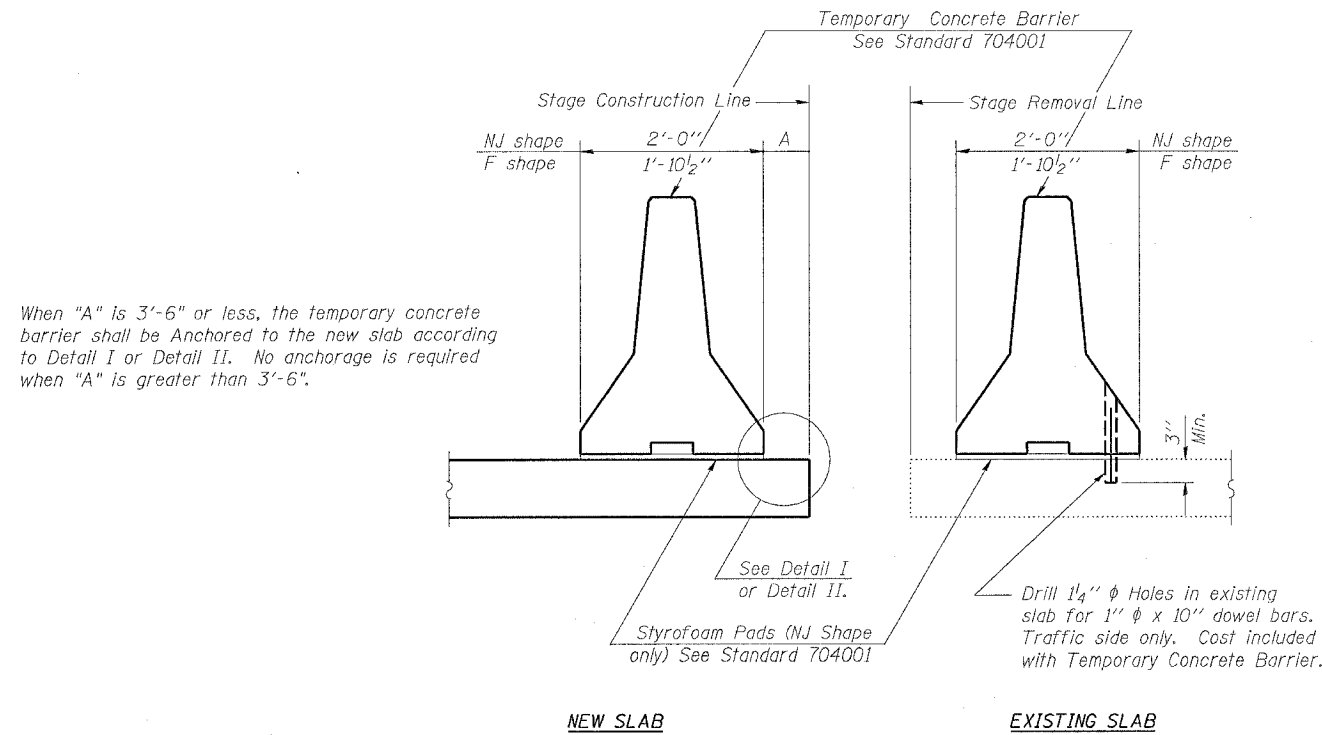


STATE OF ILLINOIS
DEPARTMENT OF TRANSPORTATION

ROUTE NO.	SECTION	COUNTY	TOTAL SHEETS	SHEET NO.
S.B.I. F.A. 5	19B-2-D	STEPHENSON	57	19
FED. ROAD DIST. NO. 7	ILLINOIS	FED. AID PROJECT-		

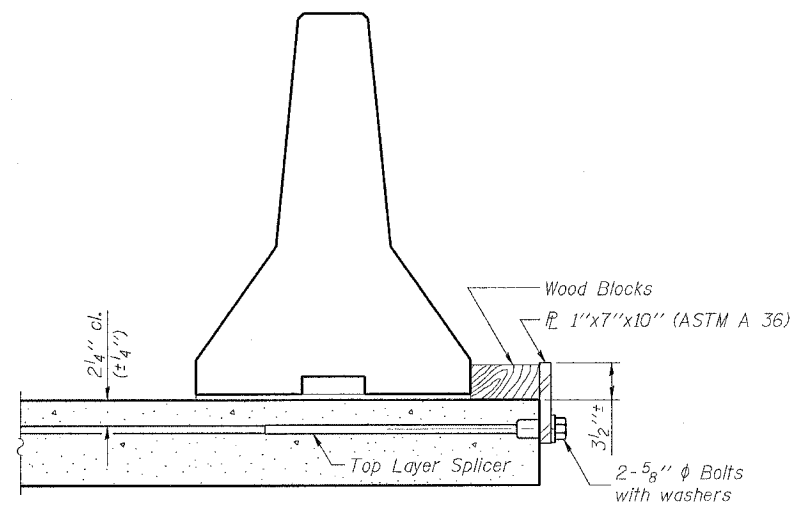
SHEET NO. 3
23 SHEETS



SECTIONS THRU SLAB

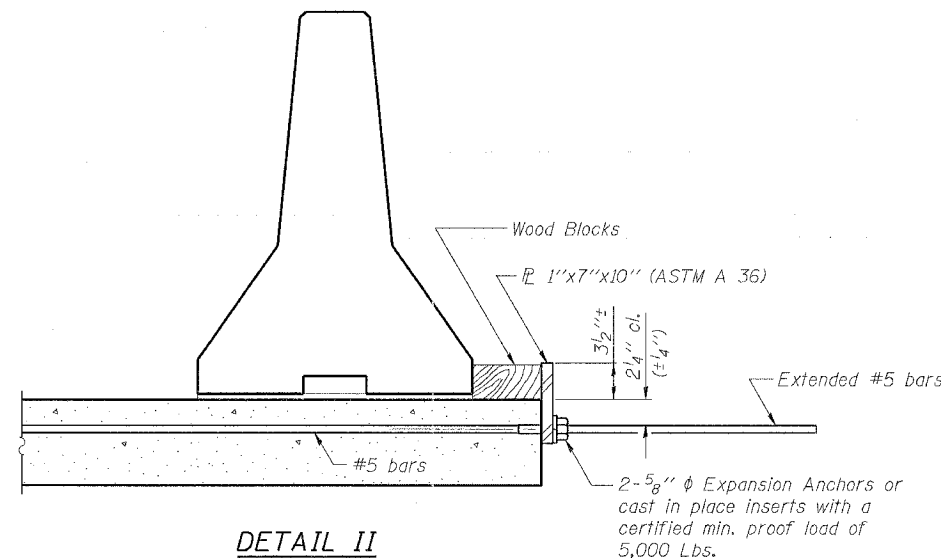
NOTES

- Detail I - With Bar Splicer or Couplers:
Connect one (1) 1"x7"x10" steel PL to the top layer of couplers with 2-5/8" φ bolts screwed to coupler at approximate C of each barrier panel.
- Detail II - With Extended Reinforcement Bars:
Connect one (1) 1"x7"x10" steel PL to the concrete slab with 2-5/8" φ Expansion Anchors or cast in place inserts spaced between the top layer of reinforcement at approximate C of each barrier panel.
- Cost of anchorage is Included with Temporary Concrete Barrier. See Roadway Plans for Quantity.



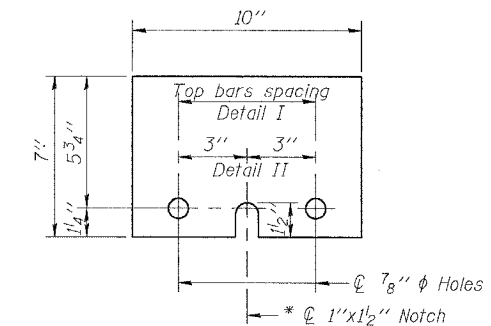
DETAIL I

The 1"x7"x10" Plate shall not be removed until Stage II Construction forms and reinforcement bars are in place.



DETAIL II

The 1"x7"x10" Plate shall not be removed until Stage II Construction forms and all reinforcement bars are in place and the concrete is ready to be placed.



1"x7"x10"
* Required only with Detail II

DESIGNED	L.C.M.	20
CHECKED	S.D.K.	EXAMINED
DRAWN	T.L.N.	ENGINEER OF BRIDGE DESIGN
CHECKED	S.D.K.	PASSED
		ENGINEER OF BRIDGES AND STRUCTURES

TEMPORARY CONCRETE BARRIER
U.S. 20 B.R. OVER YELLOW CREEK
F.A. RT. 5 SEC. 19B-2-D
STEPHENSON COUNTY
STATION 56+25.00
STRUCTURE NUMBER 089-0008

