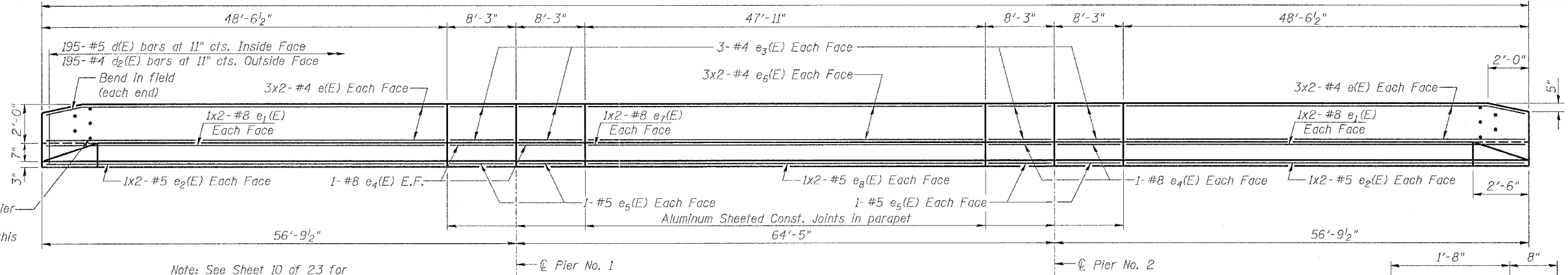


STATE OF ILLINOIS
DEPARTMENT OF TRANSPORTATION
178'-0" End to End

ROUTE NO.	SECTION	COUNTY	TOTAL SHEETS	SHEET NO.
S.B.I. F.A. 5	19B-2-D	STEPHENSON	57	25
FED. ROAD DIST. NO. 7	ILLINOIS	FED. AID PROJECT-		

SHEET NO. 9
23 SHEETS



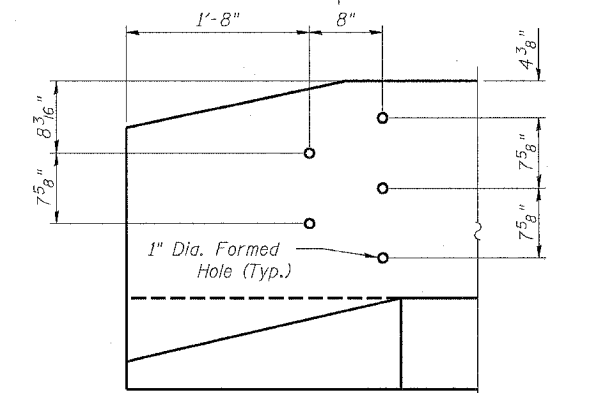
Type 6 Traffic Barrier Terminal Connection. See template detail this sheet.

Note: See Sheet 10 of 23 for Parapet Joint Details

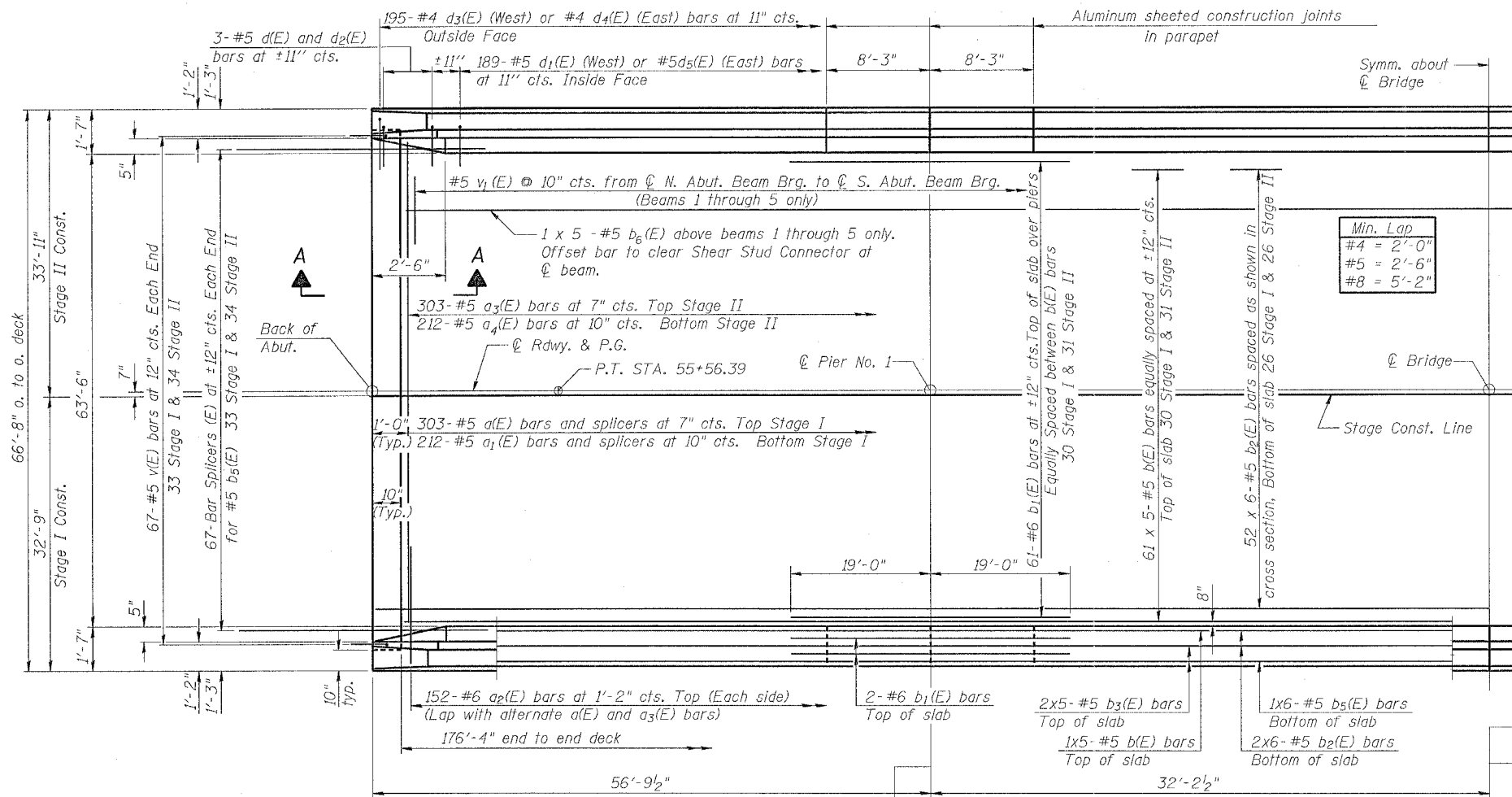
INSIDE ELEVATION OF PARAPET
(Looking East)

SUPSTR. BILL OF MATERIAL

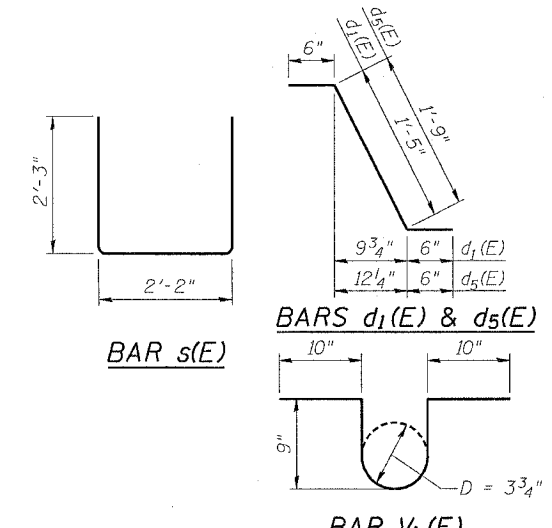
Bar No.	Size	Length	Shape
a(E)	303	#5	31'-5"
a1(E)	212	#5	31'-5"
a2(E)	304	#6	4'-6"
a3(E)	303	#5	32'-8"
a4(E)	212	#5	32'-8"
b(E)	315	#5	37'-3"
b1(E)	130	#6	38'-0"
b2(E)	312	#5	37'-3"
b3(E)	44	#5	37'-3"
b4(E)	12	#5	37'-7"
b5(E)	134	#5	4'-0"
b6(E)	25	#5	37'-3"
d(E)	390	#5	3'-0"
d1(E)	189	#5	2'-5"
d2(E)	390	#4	3'-0"
d3(E)	195	#4	3'-7"
d4(E)	195	#4	3'-10"
d5(E)	189	#5	2'-9"
e(E)	48	#4	25'-2"
e1(E)	16	#8	26'-9"
e2(E)	16	#5	25'-5"
e3(E)	48	#4	7'-11"
e4(E)	16	#8	7'-11"
e5(E)	16	#5	7'-11"
e6(E)	24	#4	24'-4"
e7(E)	8	#8	26'-5"
e8(E)	8	#5	25'-1"
m(E)	24	#6	32'-3"
m1(E)	24	#6	33'-5"
m2(E)	40	#6	5'-5"
m3(E)	8	#6	2'-5"
s(E)	184	#4	6'-8"
s1(E)	92	#4	7'-6"
u(E)	92	#5	5'-0"
v(E)	134	#5	3'-3"
v1(E)	1050	#5	3'-5"
Bar Splicers		Each	673
Reinforcement Bars, Epoxy Coated		Pound	88 719
Concrete Superstructure		Cu. Yds.	397.7



TERMINAL CONNECTION TEMPLATE DETAIL
(Cost included with concrete superstructure)



Min. Lap
#4 = 2'-0"
#5 = 2'-6"
#8 = 5'-2"



Reinforcement bars designated (E) shall be epoxy coated.
Bars indicated thus 2 x 5-#5 etc. indicates 2 lines of bars with 5 lengths per line.

SUPERSTRUCTURE
U.S. 20 B.R. OVER YELLOW CREEK
F.A. RT. 5 SEC. 19B-2-D
STEPHENSON COUNTY
STATION 56+25.00
STRUCTURE NUMBER 089-0008

DESIGNED	L.C.M.	EXAMINED	20
CHECKED	S.D.K.	PASSED	ENGINEER OF BRIDGE DESIGN
DRAWN	T.L.N.		ENGINEER OF BRIDGES AND STRUCTURES
CHECKED	S.D.K.		

