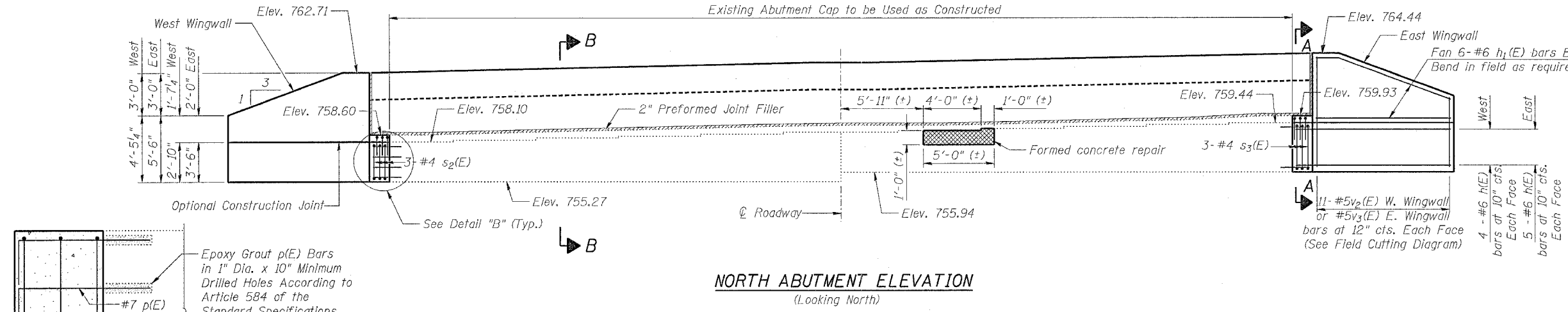


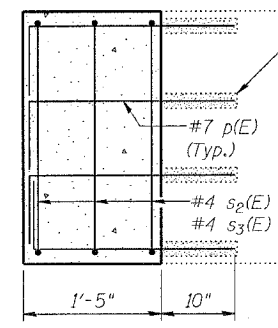
STATE OF ILLINOIS
DEPARTMENT OF TRANSPORTATION

ROUTE NO.	SECTION	COUNTY	TOTAL SHEETS	SHEET NO.	SHEET NO. 17
S.B.I. F.A. 5	19B-2-D	STEPHENSON	57	33	23 SHEETS
FED. ROAD DIST. NO. 7	ILLINOIS	FED. AID PROJECT			

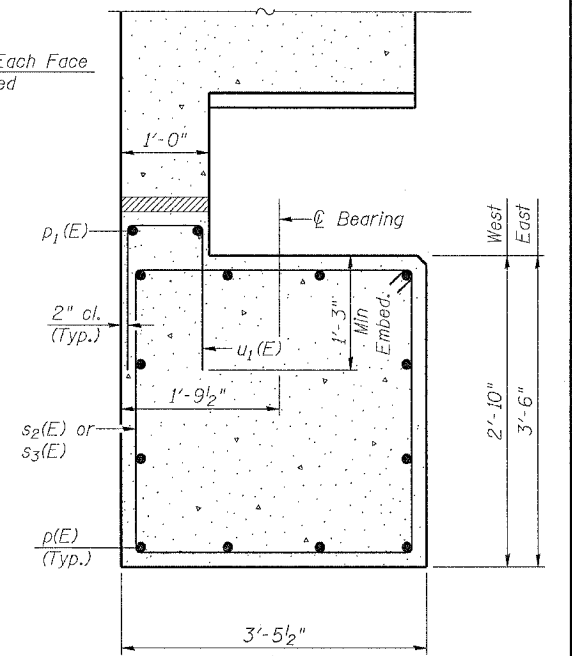
Notes: Reinforcement bars designated (E) shall be epoxy coated.



NORTH ABUTMENT ELEVATION
(Looking North)

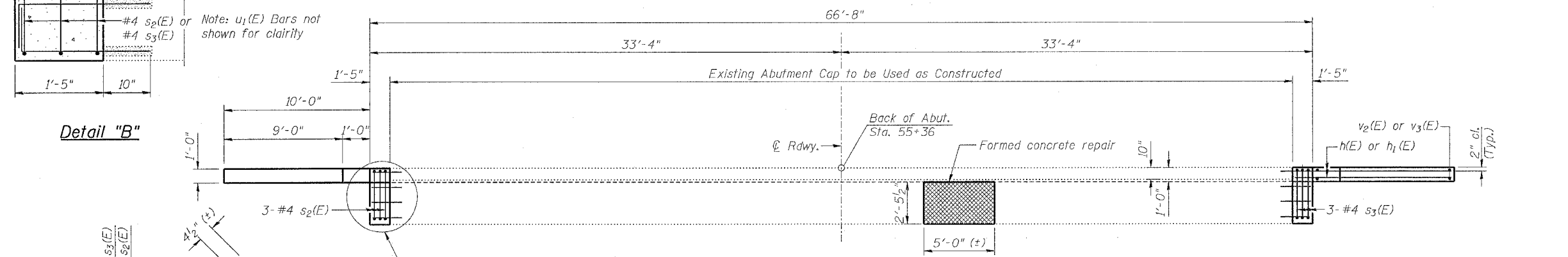


Detail "B"



SEC. A-A THRU ABUT. EXTENSION

Indicates extents of Formed Concrete Repair Depth > 5" (See Special Provisions)



NORTH ABUTMENT PLAN

SUBSTRUCTURE BILL OF MATERIAL (NORTH ABUTMENT)

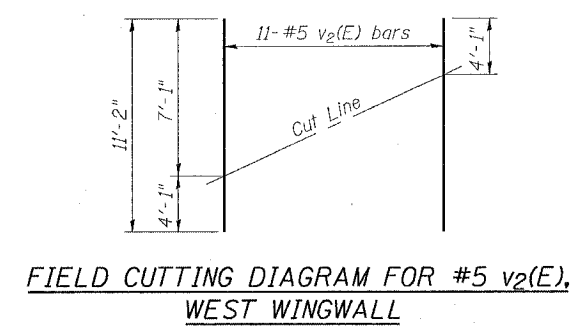
Bar No.	Size	Length	Shape
h(E)	#6	11'-1"	—
h1(E)	#6	9'-8"	—
p(E)	#7	2'-11"	—
p1(E)	#4	1'-1"	—
s2(E)	#4	11'-11"	□
s3(E)	#4	13'-3"	□
u1(E)	#4	3'-10"	□
v2(E)	#5	11'-2"	—
v3(E)	#5	13'-4"	—
Formed Concrete Repair Depth > 5"	Sq. Ft.	17.9	
Concrete Structures	Cu. Yd.	6.1	
Reinforcement Bars, Epoxy Coated	Pound	1 141	
Structure Excavation	Cu. Yd.	51.4	
Porous Granular Embankment	Cu. Yd.	141.5	

NORTH ABUTMENT
U.S. 20 B.R. OVER YELLOW CREEK
F.A. RT. 5 SEC. 19B-2-D
STEPHENSON COUNTY
STATION 56+25.00
STRUCTURE NUMBER 089-0008

BARS s2(E) & s3(E)

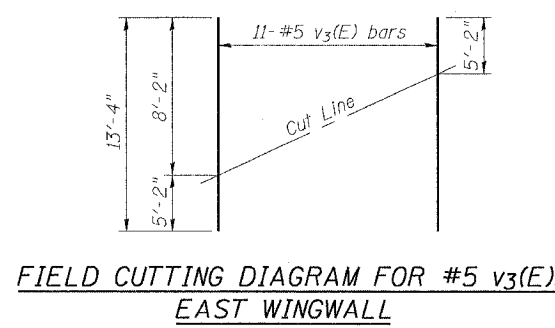
BAR p(E)

BAR u1(E)



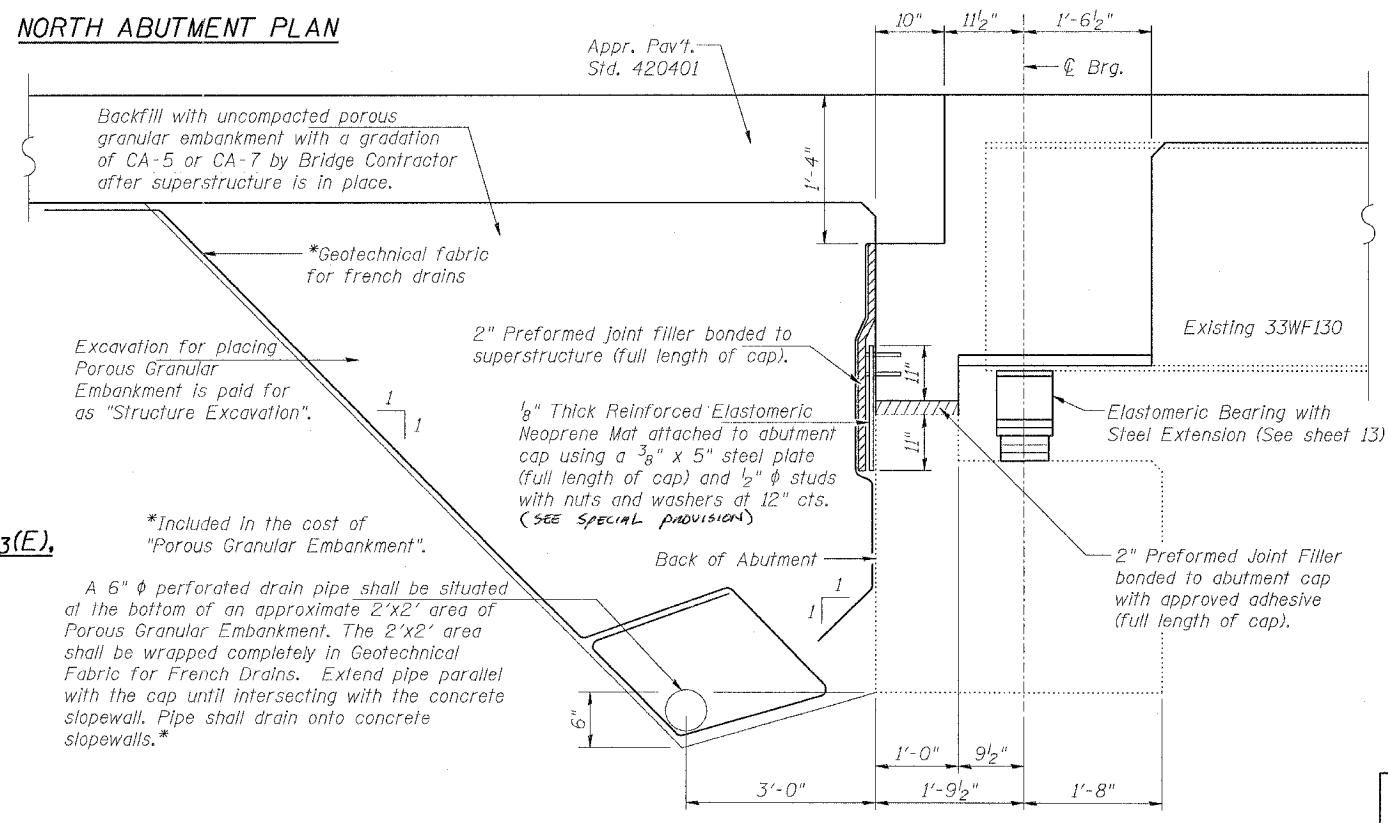
FIELD CUTTING DIAGRAM FOR #5 v2(E), WEST WINGWALL

Order v2(E) full length. Cut as shown and use remainder of bars in opposite face.



FIELD CUTTING DIAGRAM FOR #5 v3(E), EAST WINGWALL

Order v3(E) full length. Cut as shown and use remainder of bars in opposite face.



SECTION B-B THRU ABUTMENT

DESIGNED	L.C.M.	20
CHECKED	S.D.K.	EXAMINED
DRAWN	T.L.N.	PASSED
CHECKED	S.D.K.	ENGINEER OF BRIDGES AND STRUCTURES

