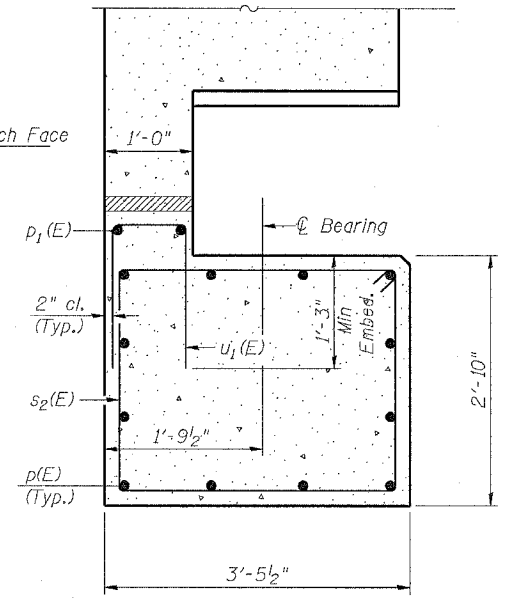
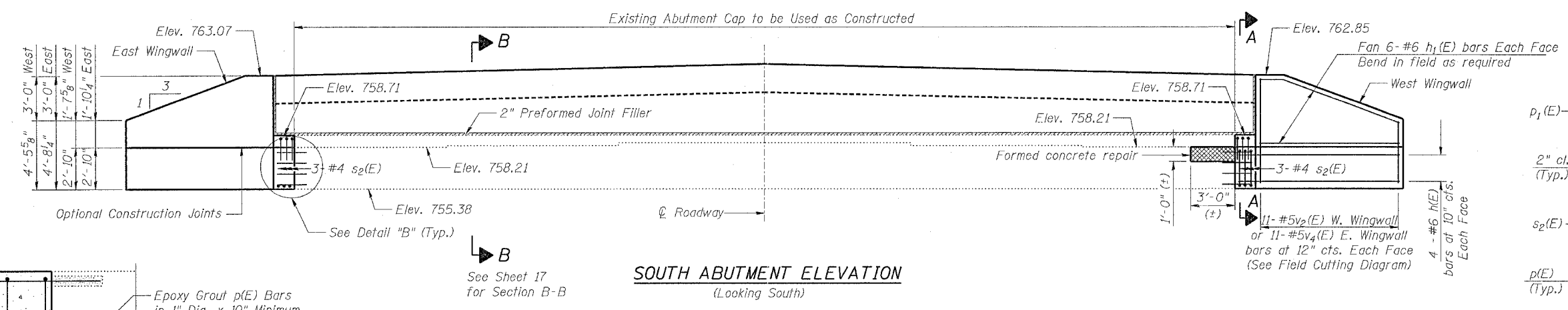


STATE OF ILLINOIS  
DEPARTMENT OF TRANSPORTATION

ROUTE NO.	SECTION	COUNTY	TOTAL SHEETS	SHEET NO.	SHEET NO.
S.B.I. F.A. 5	19B-2-D	STEPHENSON	57	34	23 SHEETS
FED. ROAD DIST. NO. 7	ILLINOIS	FED. AID PROJECT-			

Notes: Reinforcement bars designated (E) shall be epoxy coated.

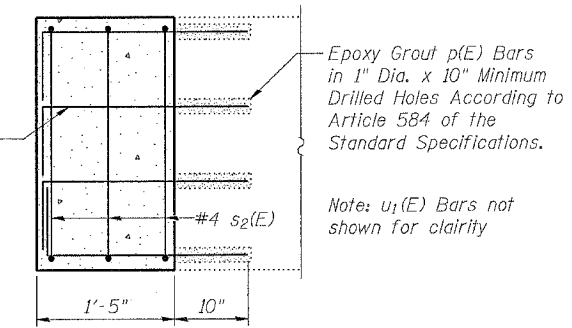


SEC. A-A THRU ABUT. EXTENSION

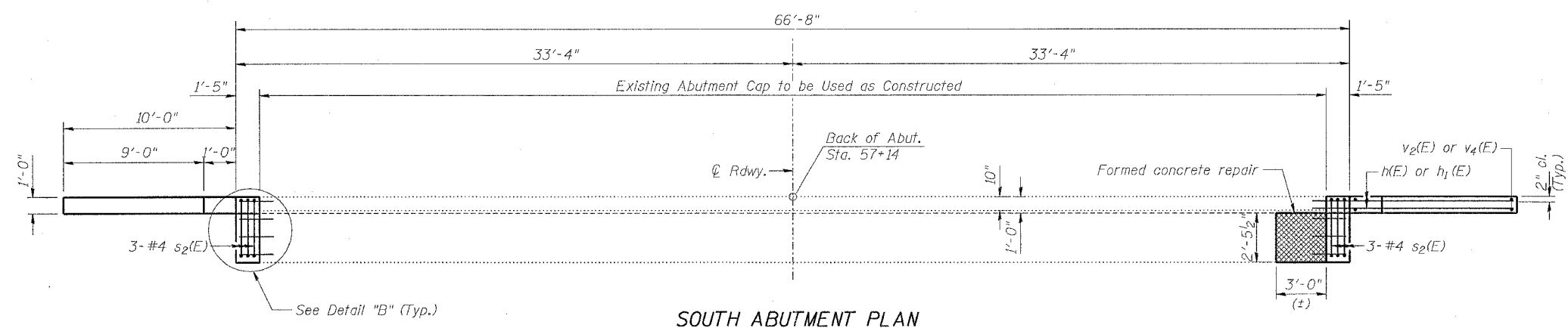
Indicates extents of Formed Concrete Repair Depth > 5\"/>

SUBSTRUCTURE BILL OF MATERIAL  
(SOUTH ABUTMENT)

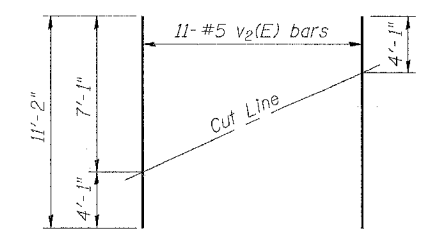
Bar	No.	Size	Length	Shape
h(E)	16	#6	11'-1\"/>	
h1(E)	24	#6	9'-8\"/>	
p(E)	24	#7	2'-11\"/>	
p1(E)	4	#4	1'-1\"/>	
s2(E)	6	#4	11'-11\"/>	
u1(E)	6	#4	3'-10\"/>	
v2(E)	22	#5	11'-2\"/>	
v4(E)	22	#5	11'-8\"/>	
Formed Concrete Repair Depth > 5\"/>				
Concrete Structures			Cu. Yd.	5.6
Reinforcement Bars, Epoxy Coated			Pound	1 085
Structure Excavation			Cu. Yd.	48.9
Porous Granular Embankment			Cu. Yd.	131.0



Detail "B"

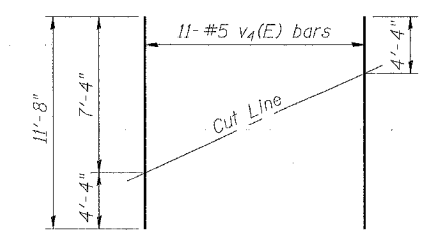


SOUTH ABUTMENT PLAN



FIELD CUTTING DIAGRAM FOR #5 v2(E) WEST WINGWALL

Order v2(E) full length. Cut as shown and use remainder of bars in opposite face.



FIELD CUTTING DIAGRAM FOR #5 v4(E) EAST WINGWALL

Order v4(E) full length. Cut as shown and use remainder of bars in opposite face.

DESIGNED	L.C.M.
CHECKED	S.D.K.
DRAWN	T.L.N.
CHECKED	S.D.K.

20	EXAMINED
ENGINEER OF BRIDGE DESIGN	PASSED
ENGINEER OF BRIDGES AND STRUCTURES	

SOUTH ABUTMENT  
U.S. 20 B.R. OVER YELLOW CREEK  
F.A. RT. 5 SEC. 19B-2-D  
STEPHENSON COUNTY  
STATION 56+25.00  
STRUCTURE NUMBER 089-0008

