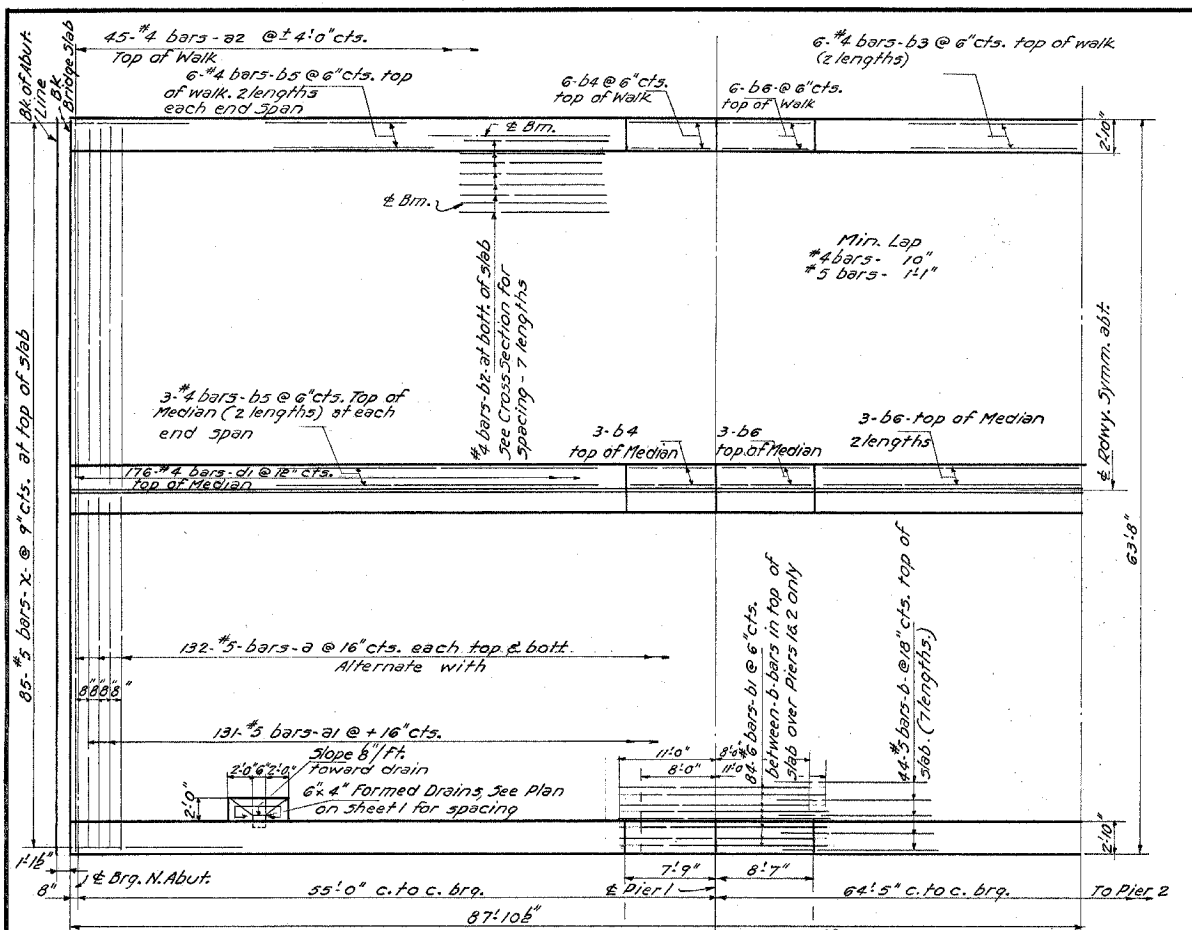
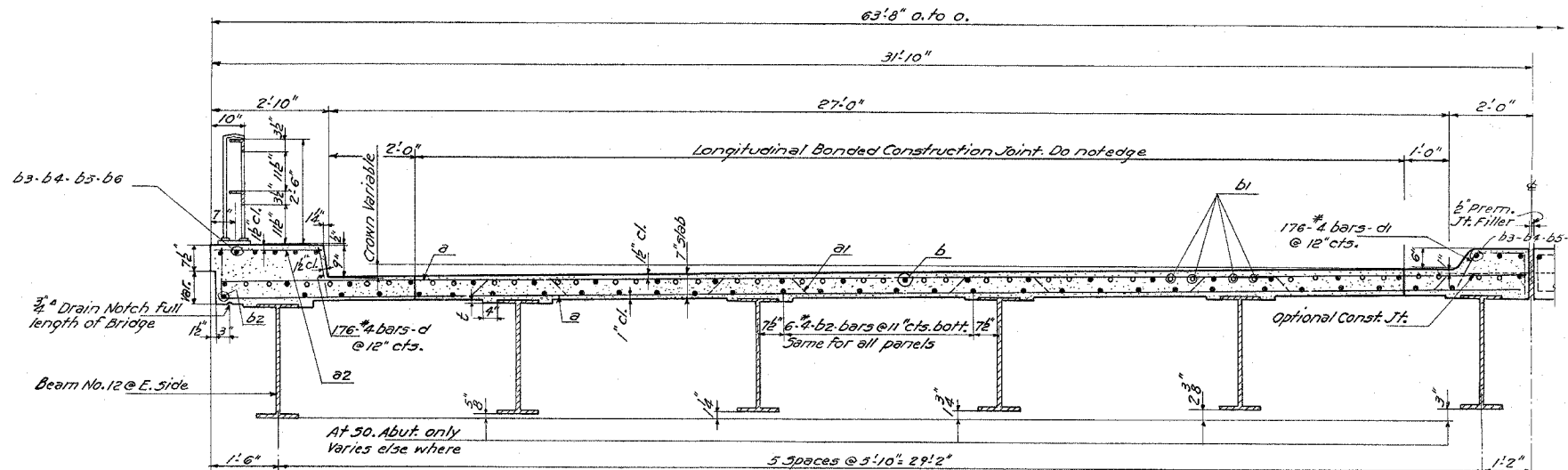


STATE OF ILLINOIS
DEPARTMENT OF PUBLIC WORKS & BUILDINGS
DIVISION OF HIGHWAYS

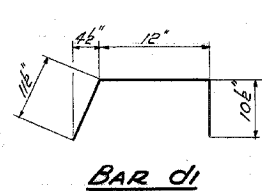
S.B.I. ROUTE NO. 5	SECTION 19VE-1, 19E-1	COUNTY	TOTAL SHEETS 57	SHEET NO. 41	SHEET NO. 2
FED. ROAD DIST. NO. 7	ILLINOIS	FED. AID PROJECT	8 SHEETS		



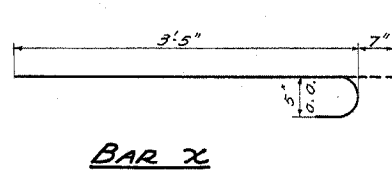
HALF PLAN



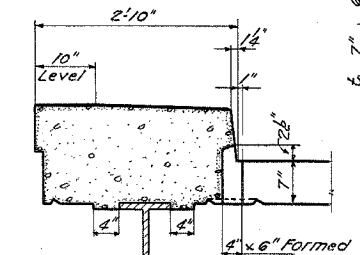
HALF CROSS SECTION
Looking South-near S. Abut.



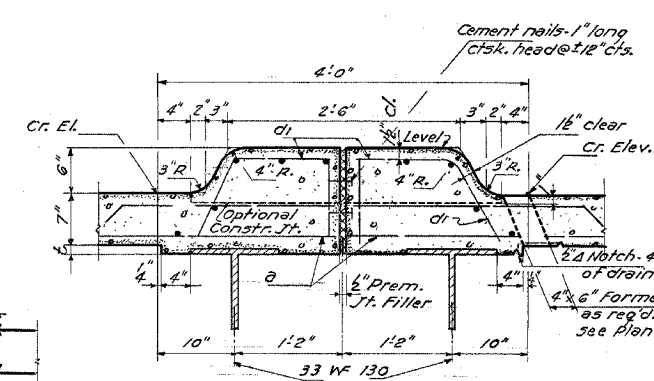
BAR d1



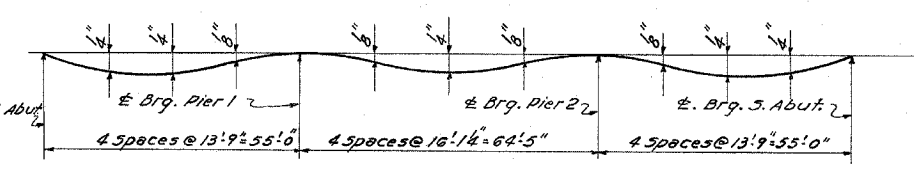
BAR x



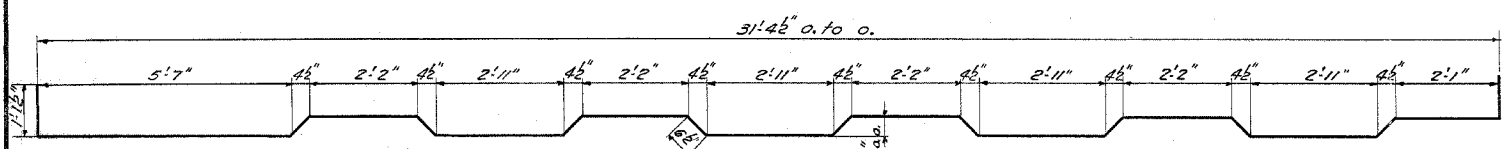
DETAIL OF FLOOR DRAIN



DETAIL OF MEDIAN



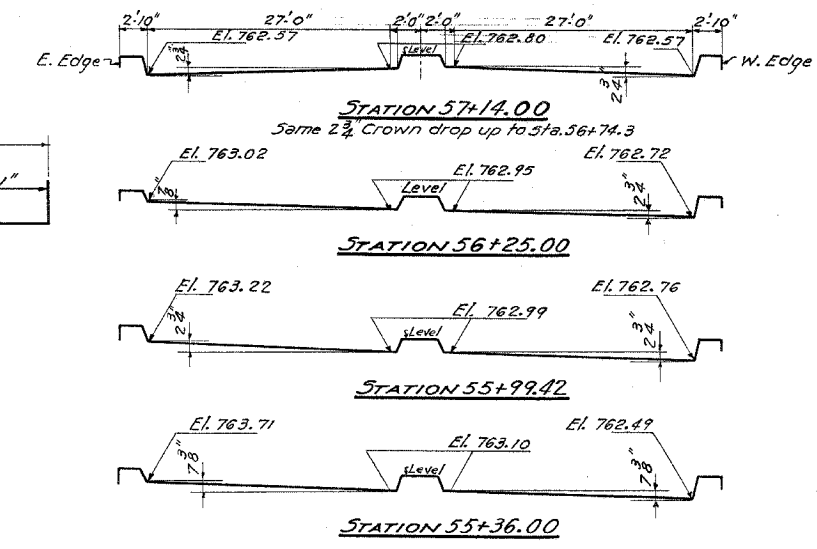
DEAD LOAD DEFLECTION DIAGRAM



BAR a1

ELEVATIONS AT TOP OF SLAB

Station	Description	Crown Elev.	E. Gutter above Crown	W. Gutter below Crown
55+36.00	Bk. N. Abut.	763.10	7 3/8"	7 3/8"
55+56.30	R.T.	763.06	5 3/8"	5 3/8"
55+92.79	± Pier 1	763.00	3 1/4"	3 1/4"
55+99.42	Start S.E. West Side	762.99	2 3/4"	2 3/4"
56+07.04	N. Splice	762.98	2 3/4"	2 3/4"
56+25.00	± Bridge	762.95	8"	2 3/4"
56+42.96	S. Splice	762.92	-6"	2 3/4"
56+57.21	± Pier 2	762.90	-1 1/2"	2 3/4"
56+74.30	Start S.E. East Side	762.87	-2 3/4"	2 3/4"
57+14.00	Bk. S. Abut.	762.80	-2 3/4"	2 3/4"



CROWN OF BRIDGE AT STATIONS SHOWN

BILL OF MATERIAL

BAR	NUMBER	SIZE	LENGTH	SHAPE
a	520	#5	31'5"	—
a1	262	#5	39'0"	~
a2	94	#4	2'5"	~
b	308	#5	26'3"	—
b1	168	#6	18'0"	—
b2	434	#4	26'0"	—
b3	36	#4	24'0"	—
b4	36	#4	7'6"	—
b5	72	#4	24'3"	—
b6	36	#4	8'3"	—
c	352	#4	1'0"	—
d1	352	#4	2'10"	—
x	170	#5	4'0"	—

Class X Concrete Cu. Yds. 292.9
Reinforcement Bars Lbs. 50820
Structural Steel Lbs. 335050

DESIGNED *M.H.K. Kall*
CHECKED *W.M. Sommer*
DRAWN *M.H.K. Miller*
CHECKED *W.M.S.*

EXAMINED *V.M. Romine*
PASSED *[Signature]*
APPROVED *[Signature]*

Mar. 2, 1955

SUPERSTRUCTURE
S.B.I. ROUTE 5 - SEC. 19-BF-1
STEPHENSON COUNTY
STATION 56+25