

FAS ROUTE	SECTION	COUNTY	TOTAL SHEETS	SHEET NO
1197	105 BR-2	WHITESIDE	59	6
STA. 224+00		TO STA. 232+00		

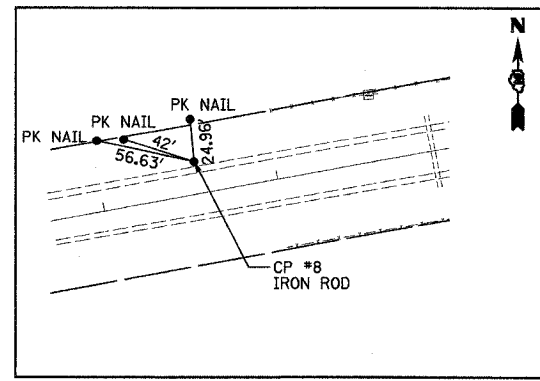
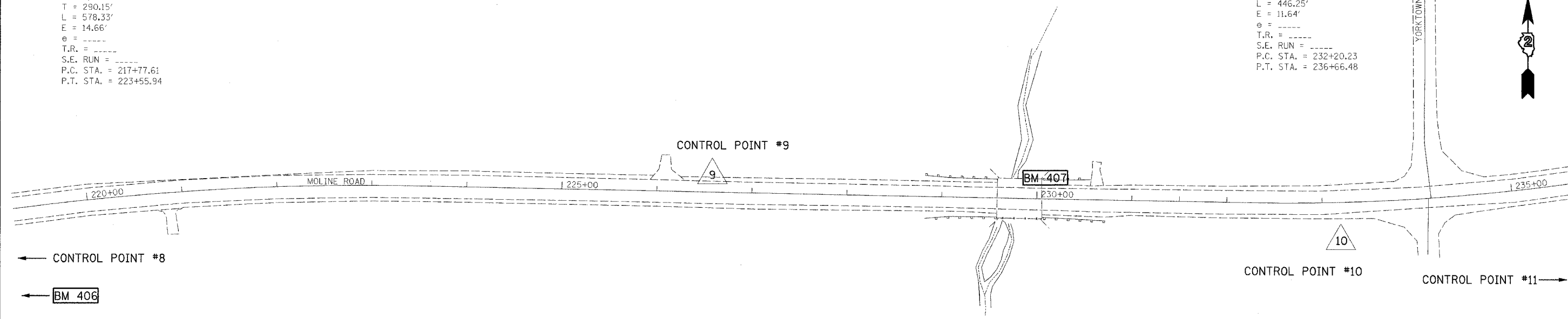
EXISTING CONDITIONS: CONTRACT 64421



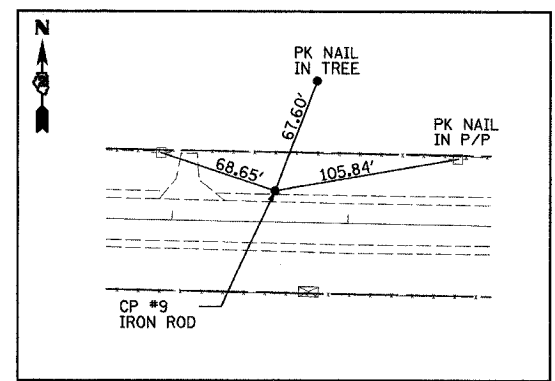
EXIST. CURVE C1  
 PI STA. = 220+67.76  
 $\Delta = 11^\circ 34' 00''$  (RT)  
 $D = 2^\circ 00' 00''$   
 $R = 2,864.79'$   
 $T = 290.15'$   
 $L = 578.33'$   
 $E = 14.66'$   
 $e = \text{---}$   
 $T.R. = \text{---}$   
 $S.E. RUN = \text{---}$   
 $P.C. STA. = 217+77.61$   
 $P.T. STA. = 223+55.94$

EXIST. CURVE C2  
 PI STA. = 234+44.16  
 $\Delta = 11^\circ 54' 00''$  (LT)  
 $D = 2^\circ 40' 00''$   
 $R = 2,148.59'$   
 $T = 223.93'$   
 $L = 446.25'$   
 $E = 11.64'$   
 $e = \text{---}$   
 $T.R. = \text{---}$   
 $S.E. RUN = \text{---}$   
 $P.C. STA. = 232+20.23$   
 $P.T. STA. = 236+66.48$

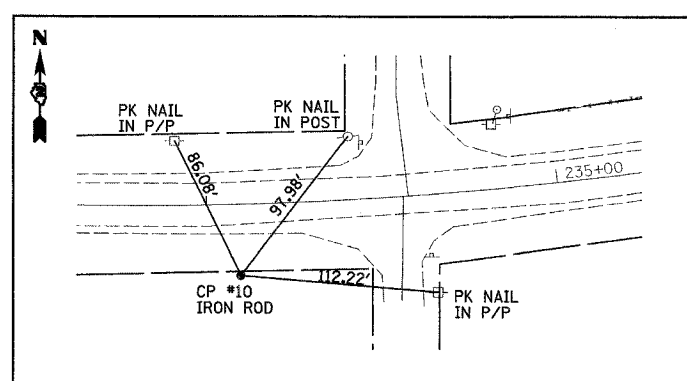
PLAN	NOTE BOOK NO.



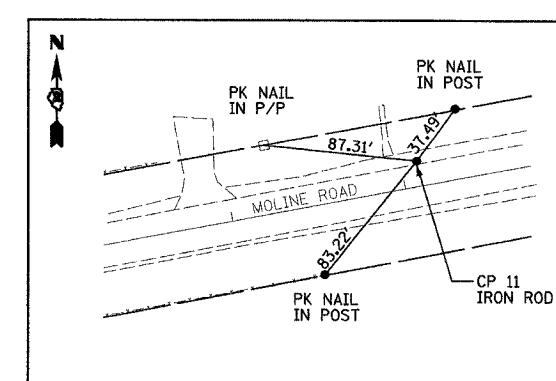
CONTROL POINT #8  
 STA 216+55.13, 18.421 LT  
 N 1847212.9742  
 E 2378028.7029



CONTROL POINT #9  
 STA 226+58.25, 17.87 LT  
 N 1847277.4184  
 E 2379030.4301



CONTROL POINT #10  
 STA 233+18.76 40.60' RT  
 N 1847200.0222  
 E 2379803.4551



CONTROL POINT #11  
 STA 243+09.06 14.54' LT  
 N 1847357.9048  
 E 2380612.3144

**BENCHMARKS**

BM 406 "□" CUT ON CONCRETE HEADWALL OF  
 CULVERT  
 STA. 214+81.2 28.5' LT  
 ELEV. 620.58

BM 407 "□" CUT ON TOP OF NORTH EAST WINGWALL  
 OF BRIDGE  
 STA. 230+06.6 23.3' LT  
 ELEV. 618.83

NOTE:  
 BASIS OF BEARINGS AND COORDINATES IS  
 ILLINOIS STATE PLANE (NAD83) WEST ZONE.  
 GROUND VALUES SHOWN (COMBINED GRID  
 FACTOR FOR PROJECT AREA 0.999929977).  
 NGS MONUMENTS BUR40-1A & BUR40-1B WERE  
 USED FOR CONTROL.

REVISIONS	
NAME	DATE

ILLINOIS DEPARTMENT OF TRANSPORTATION  
 FAS ROUTE 1197 (MOLINE ROAD)  
 SECTION 105BR-2  
 WHITESIDE COUNTY  
**ALIGNMENT & TIES  
 BENCHMARKS**  
 DRAWN BY: HLC

11/3/2004  
 DATE TIME  
 -C- OF REC  
 -R- REF.