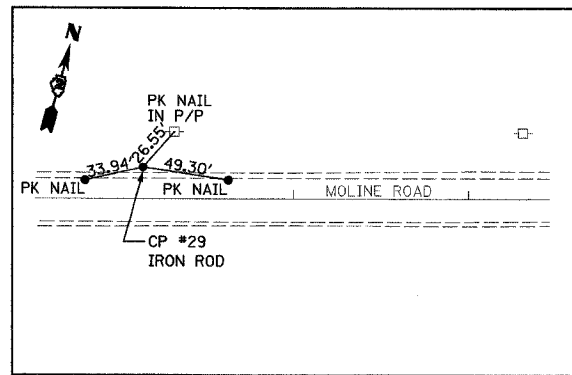
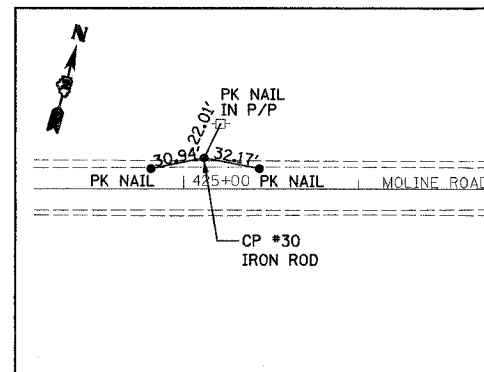


FAS NO.	SECTION	COUNTY	TOTAL SHEETS	SHEET NO.
1197	105-T	WHITESIDE	59	7
STA. 429+00 TO STA. 425+38				
EXISTING CONDITIONS:				

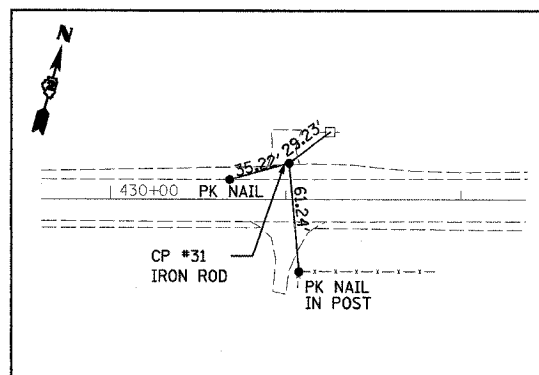
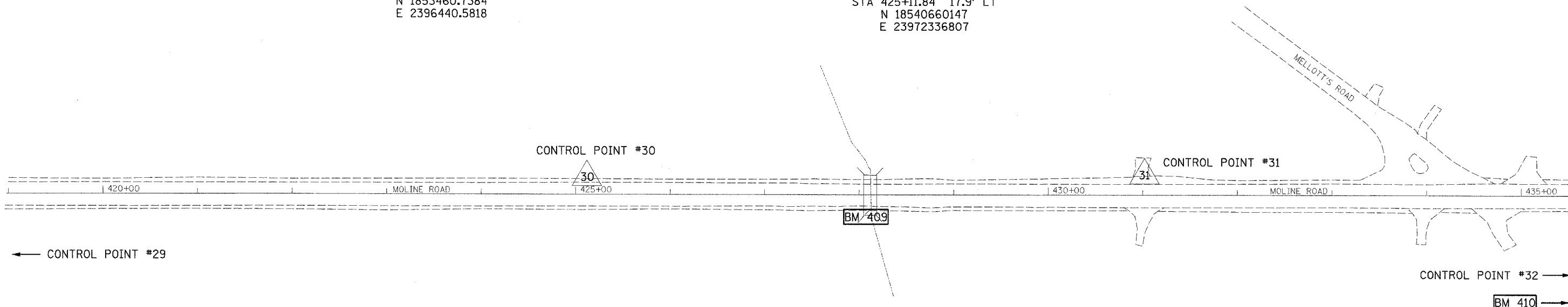
CONTRACT 64421



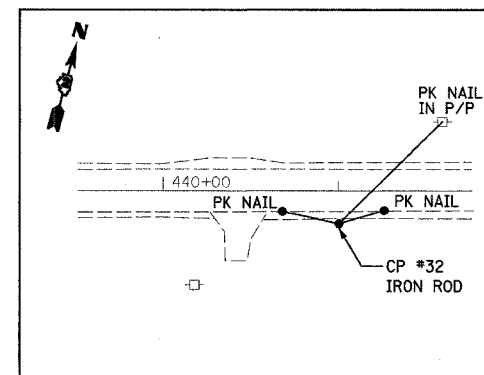
CONTROL POINT #29  
 STA 415+14, 18.2' LT  
 N 1853460.7384  
 E 2396440.5818



CONTROL POINT #30  
 STA 425+11.84 17.9' LT  
 N 18540660147  
 E 23972336807



CONTROL POINT #31  
 STA 431+01.81 20.7' LT  
 N 18544261706  
 E 23977009665



CONTROL POINT #32  
 STA 441+00 18.6' RT  
 N 18550009663  
 E 239858185368

**BENCHMARKS**

BM 409 "□" CUT ON S.W. WINGWALL OF BRIDGE STA. 428+05.35 21.4' RT ELEV. 623.39'

BM 410 "□" CUT ON CONCRETE HEADWALL @ PRIVATE ENTRANCE 23601 MOLINE ROAD STA. 440+57.6 23.5' LT ELEV. 629.34'

NOTE:  
 BASIS OF BEARINGS AND COORDINATES IS ILLINOIS STATE PLANE (NAD83) WEST ZONE. GROUND VALUES SHOWN (COMBINED GRID FACTOR FOR PROJECT AREA 0.999929977). NGS MONUMENTS BUR40-1A & BUR40-1B WERE USED FOR CONTROL.

REVISIONS	
NAME	DATE

ILLINOIS DEPARTMENT OF TRANSPORTATION  
 FAS 1197 (MOLINE ROAD)  
 SECTION 105-T  
 WHITESIDE COUNTY  
 ALIGNMENT & TIES  
 BENCHMARKS

DRAWN BY: HLC

PLAN	DATE
NO.	BY
NO.	DATE
NO.	DATE
NO.	DATE
NO.	DATE
NO.	DATE
NO.	DATE
NO.	DATE
NO.	DATE
NO.	DATE