

| F.A.S. RTE.         | SECTION  | COUNTY                    | TOTAL SHEETS | SHEET NO. |
|---------------------|----------|---------------------------|--------------|-----------|
| 1197                | 105 BR-2 | WHITESIDE                 | 59           | 11        |
| STA. 224+00         |          | TO STA. 232+00            |              |           |
| FED. ROAD DIST. NO. |          | ILLINOIS FED. AID PROJECT |              |           |
| CONTRACT 64421      |          |                           |              |           |

|          |  |
|----------|--|
| DATE     |  |
| BY       |  |
| DESIGNED |  |
| CHECKED  |  |
| DATE     |  |
| BY       |  |
| DATE     |  |
| BY       |  |

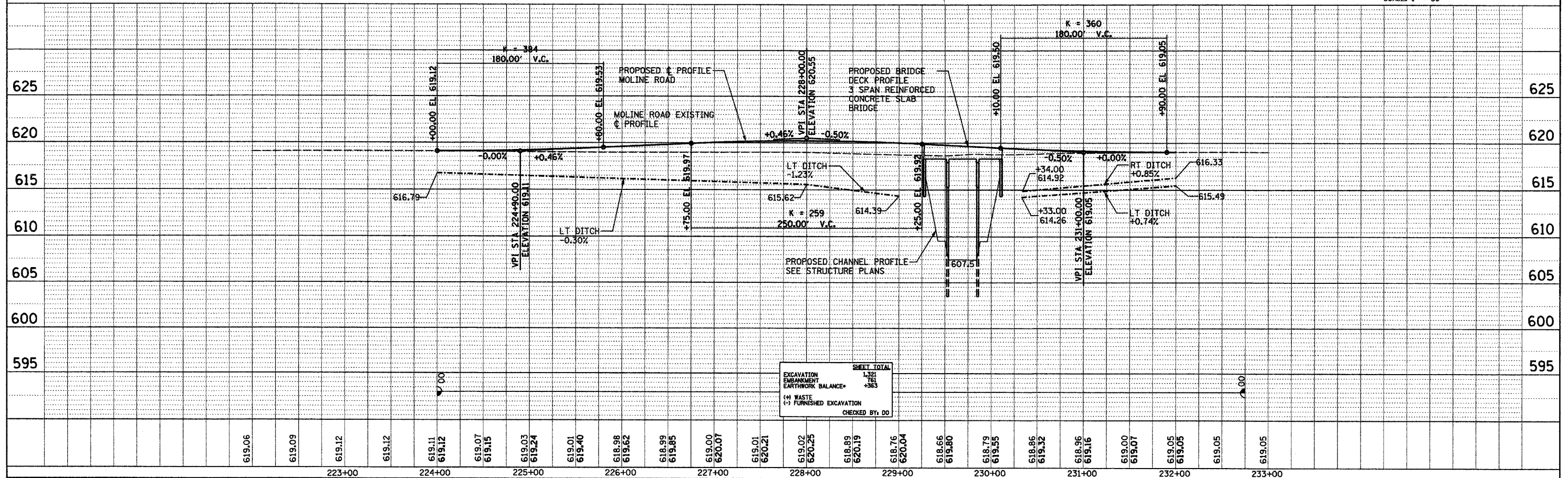
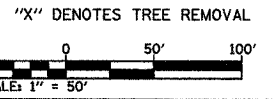
|          |  |
|----------|--|
| DATE     |  |
| BY       |  |
| DESIGNED |  |
| CHECKED  |  |
| DATE     |  |
| BY       |  |
| DATE     |  |
| BY       |  |

EXIST. CURVE C1  
 PI STA. = 220+67.76  
 $\Delta = 11^\circ 34' 00''$  (RT)  
 $D = 2^\circ 00' 00''$   
 $R = 2,864.79'$   
 $T = 290.15'$   
 $L = 578.33'$   
 $E = 14.66'$   
 P.C. STA. = 217+77.61  
 P.T. STA. = 223+55.94

EXIST. CURVE C2  
 PI STA. = 234+44.16  
 $\Delta = 11^\circ 54' 00''$  (LT)  
 $D = 2^\circ 40' 00''$   
 $R = 2,148.59'$   
 $T = 223.93'$   
 $L = 446.25'$   
 $E = 11.64'$   
 P.C. STA. = 232+20.23  
 P.T. STA. = 236+66.48

PAVEMENT REMOVAL - STA 228+65.50 TO 229+58.29  
 STA 230+05.43 TO 230+69.49

BM BENCHMARK #407:  
 "X" CUT ON TOP OF NE WINGWALL OF BRIDGE  
 STA 230+06.6 22.3' LT  
 ELEV 618.83



|                          |       |
|--------------------------|-------|
| SHEET TOTAL              | 1.32  |
| EXCAVATION               | 1.32  |
| EMBANKMENT               | 0.00  |
| EARTHWORK BALANCE        | +3.63 |
| (H) WASTE                |       |
| (C) FURNISHED EXCAVATION |       |
| CHECKED BY:              | DD    |

MOLINE ROAD (3 mi NE OF LYNDON)