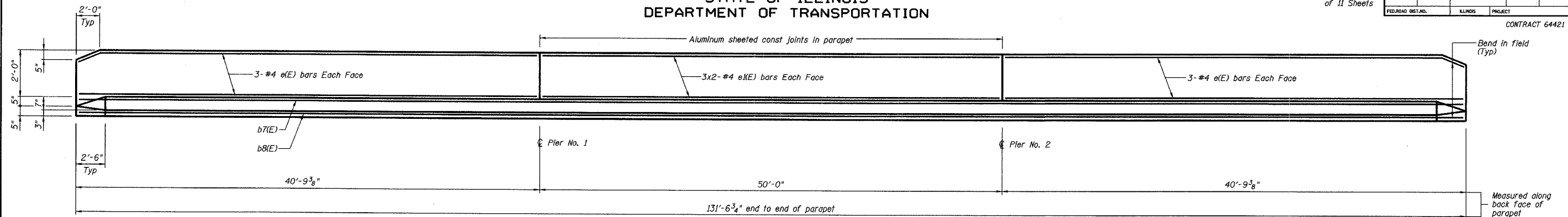


STATE OF ILLINOIS
DEPARTMENT OF TRANSPORTATION

Sheet No. 6
of 11 Sheets

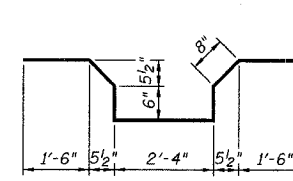
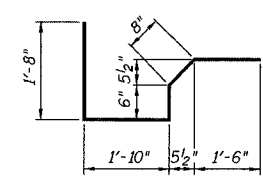
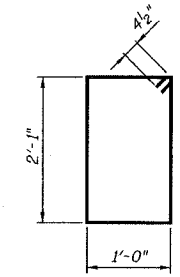
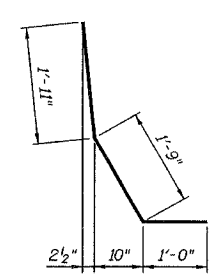
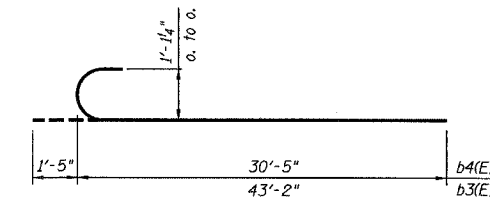
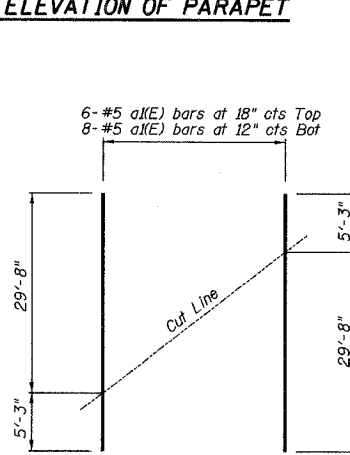
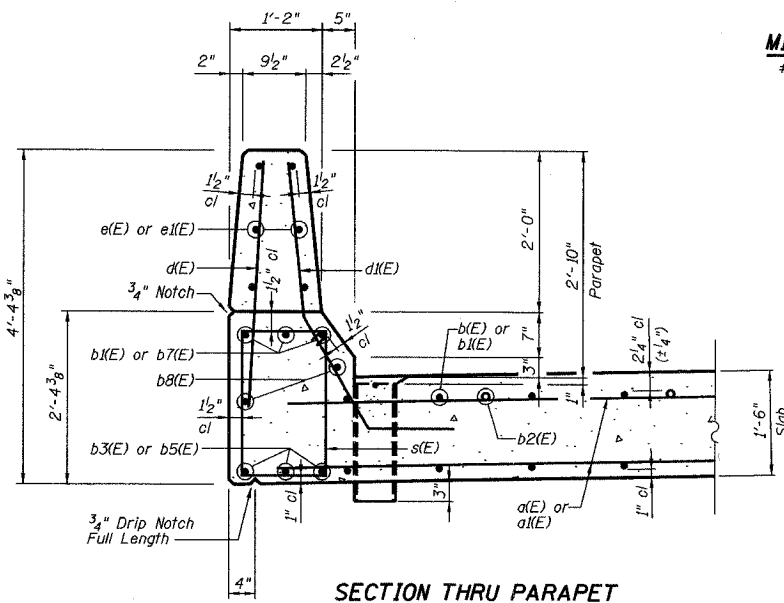
ROUTE NO.	SECTION	COUNTY	TOTAL SHEETS	SHEET NO.
FAS 1197	105BR-2	WHITESIDE	59	21
FED. ROAD DIST. NO.	ILLINOIS	PROJECT		
			CONTRACT 64421	



INSIDE ELEVATION OF PARAPET

MIN BAR LAP
#4 bars = 1'-4"

6-#5 a(E) bars at 18" cts Top
8-#5 a(E) bars at 12" cts Bot



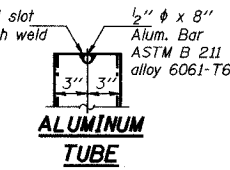
SUPERSTRUCTURE
BILL OF MATERIAL

Bar	No.	Size	Length	Shape
a(E)	8	#5	36'-2"	—
a(E)	217	#5	34'-11"	—
b(E)	62	#5	21'-4"	—
b(E)	74	#10	49'-3"	—
b2(E)	60	#10	15'-4"	—
b3(E)	60	#10	44'-7"	—
b4(E)	46	#10	31'-10"	—
b5(E)	90	#10	21'-2"	—
b6(E)	23	#10	29'-2"	—
b7(E)	12	#10	25'-10"	—
b8(E)	16	#5	34'-8"	—
d(E)	264	#4	3'-0"	—
d(E)	288	#5	4'-8"	—
e(E)	24	#4	40'-6"	—
e(E)	24	#4	25'-7"	—
s(E)	264	#4	6'-11"	—
x(E)	72	#5	6'-2"	—
x(E)	72	#5	7'-8"	—
Reinforcement Bars, Epoxy Coated	Pound		65,280	
Concrete Superstructure	Cu. Yds.		293.4	

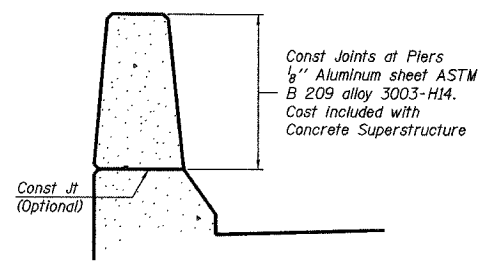
Reinforcement bars designated (E) shall be epoxy coated.
Bars indicated thus 1 x 3-#5 etc. indicates 1 line of bars with 3 lengths per line.

SECTION THRU PARAPET

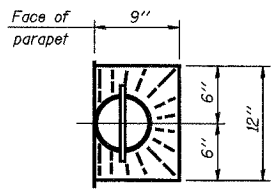
FIBERGLASS PIPE



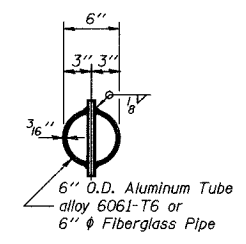
PARAPET JOINT DETAILS



Notes:
The exterior surfaces of the Fiberglass Floor Drain shall be painted with a vinyl enamel coat. The color shall be Munsell Standard 10Y 7/1 Light Gray. The exterior surfaces of the drains shall be cleaned according to Steel Structures Painting Council's Spec SSPC-SP1 prior to painting. Painting of the Fiberglass Floor Drains will not be required when the exterior surfaces of the furnished drains are coated by the manufacturer with silver pigments or a pigment that matches the color of the concrete slab. Fiberglass pipe shall conform to ASTM D2996, with short-time rupture strength hoop tensile stress of 30,000 psi minimum. The surface of the Fiberglass pipe shall be free of bond inhibiting agents. Fiberglass to have prewash as per MIL-P-15328 prior to painting.



TOP PLAN



TOP PLAN (Showing Aluminum Tube)

SUPERSTRUCTURE DETAILS

REVISIONS No. DATE INITIALS 1 2 3 4 5 6 7 8 9 10 11 12		MOLINE ROAD OVER UNNAMED TRIBUTARY TO ROCK RIVER FAS ROUTE 1197 SECTION 105BR-2 STA 229+67.50 SN 098-0110 WHITESIDE COUNTY HOMER L. CHASTAIN & ASSOCIATES, LLP CONSULTING ENGINEERS 184-001397		DRAWN BY DATE R King 8/04 CHECKED BY DATE CMV 8/04 GA/OC BY DATE CWC 8/04 PROJECT NO. 4858-3 SHEET NO.
---	--	---	--	--