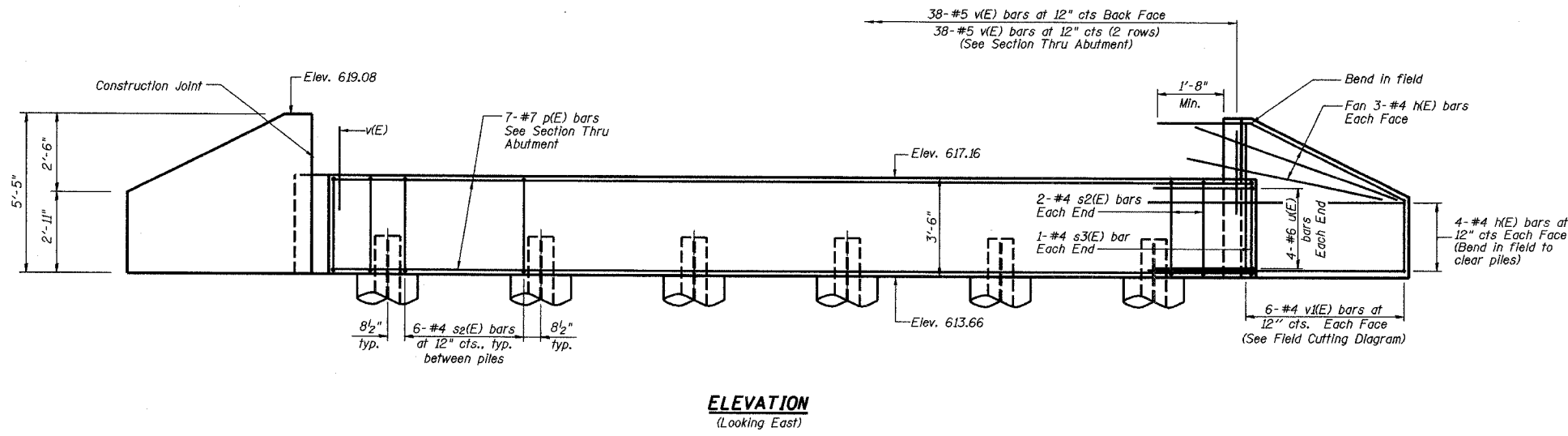


STATE OF ILLINOIS  
DEPARTMENT OF TRANSPORTATION

Sheet No. 8  
of 11 Sheets

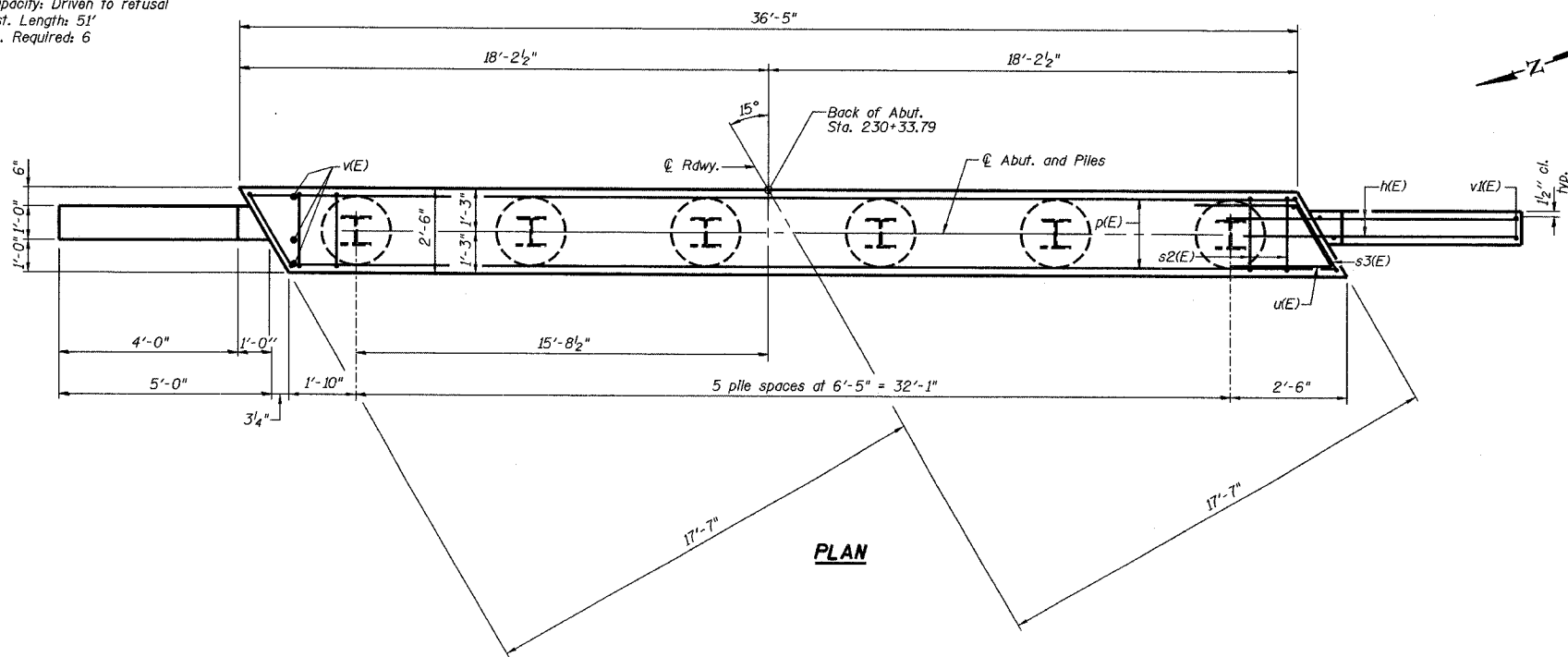
ROUTE NO.	SECTION	COUNTY	TOTAL SHEETS	SHEET NO.
FAS 1197	105BR-2	WHITESIDE	59	23
FEDERAL DIST. NO.	ILLINOIS PROJECT	CONTRACT 64421		



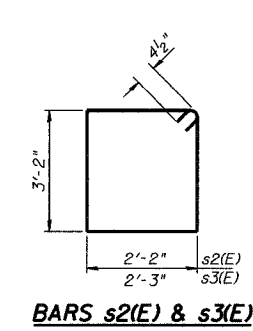
**ELEVATION**  
(Looking East)

**PILE DATA**

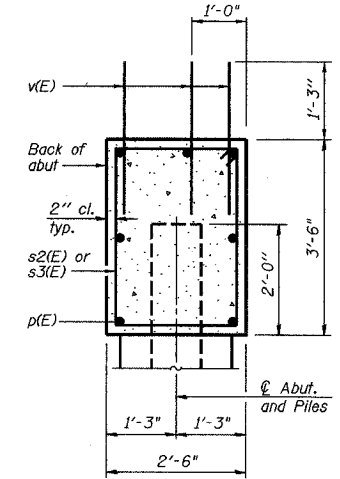
Type: HP12x63  
Capacity: Driven to refusal  
Est. Length: 51'  
No. Required: 6



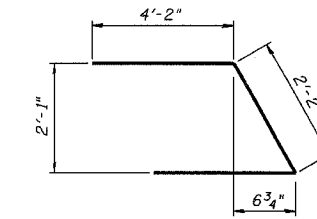
**PLAN**



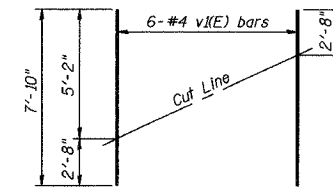
**BARS s2(E) & s3(E)**



**SECTION THRU ABUTMENT**



**BAR u(E)**



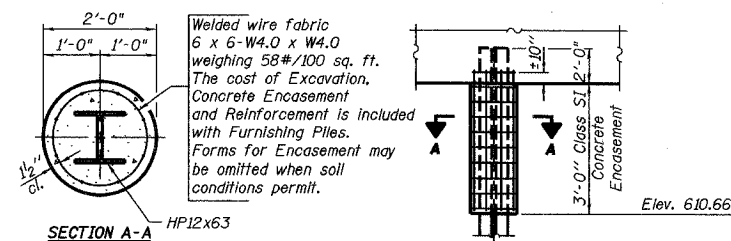
**FIELD CUTTING DIAGRAM**

Order v(E) full length. Cut as shown and use remainder of bars in opposite face.

**BILL OF MATERIAL**

Bar No.	Size	Length	Shape
h(E)	#4	7'-3"	
p(E)	#7	36'-1"	
s2(E)	#4	11'-5"	
s3(E)	#4	11'-7"	
u(E)	#6	10'-6"	
v(E)	#5	3'-5"	
v(E)	#4	7'-10"	
Structure Excavation	Cu. Yd.	35	
Concrete Structures	Cu. Yd.	13.4	
Reinforcement Bars, Epoxy Coated	Pound	1520	
Furnishing Steel Piles HP12x63	Foot	306	
Driving Steel Piles	Foot	306	

Reinforcement bars designated (E) shall be epoxy coated.



**PILE ENCASEMENT DETAIL**

**EAST ABUTMENT DETAILS**

<b>REVISIONS</b> No. DATE INITIALS 1 2 3 4 5 6 7 8 9 10 11 12		<b>MOLINE ROAD OVER UNNAMED TRIBUTARY TO ROCK RIVER</b> FAS ROUTE 1197 SECTION 105BR-2 STA 229+67.50 WHITESIDE COUNTY HOMER L. CHASTAIN & ASSOCIATES, LLP CONSULTING ENGINEERS 184-001397	DRAWN BY DATE R King 8/04 CHECKED BY DATE CMV 8/04 QA/QC BY DATE CWC 8/04 PROJECT NO. <b>4858-3</b> SHEET NO.
--	--	--	---