

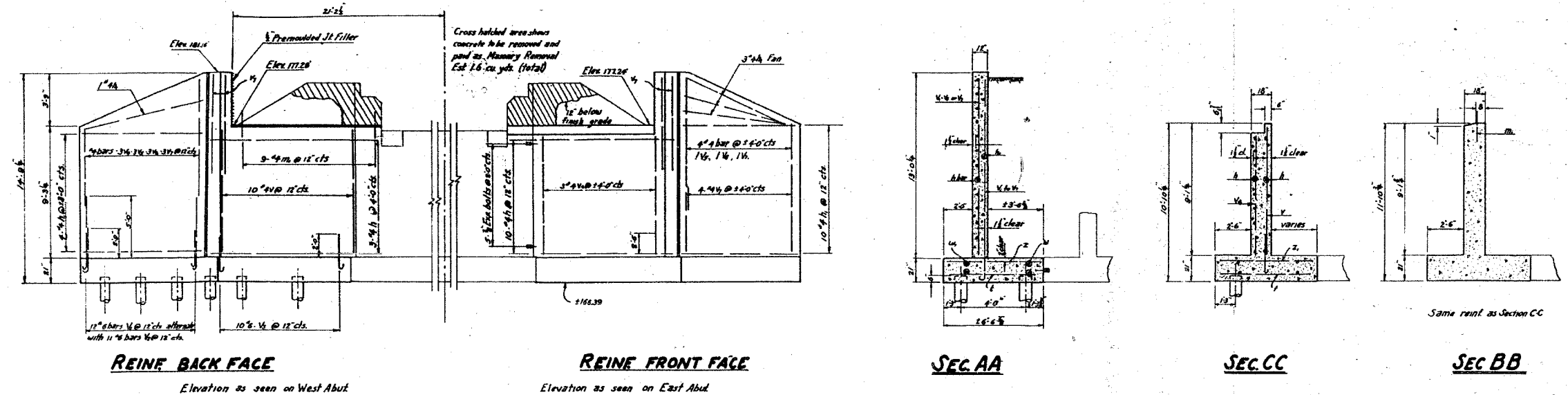
P.B. NO.	SECTION	COUNTY	TOTAL SHEETS	SHEET NO.
1197	105 BR-2	WHITESIDE	59	34
STA.	TO STA.			
EXISTING CONDITIONS:				

CONTRACT 64421

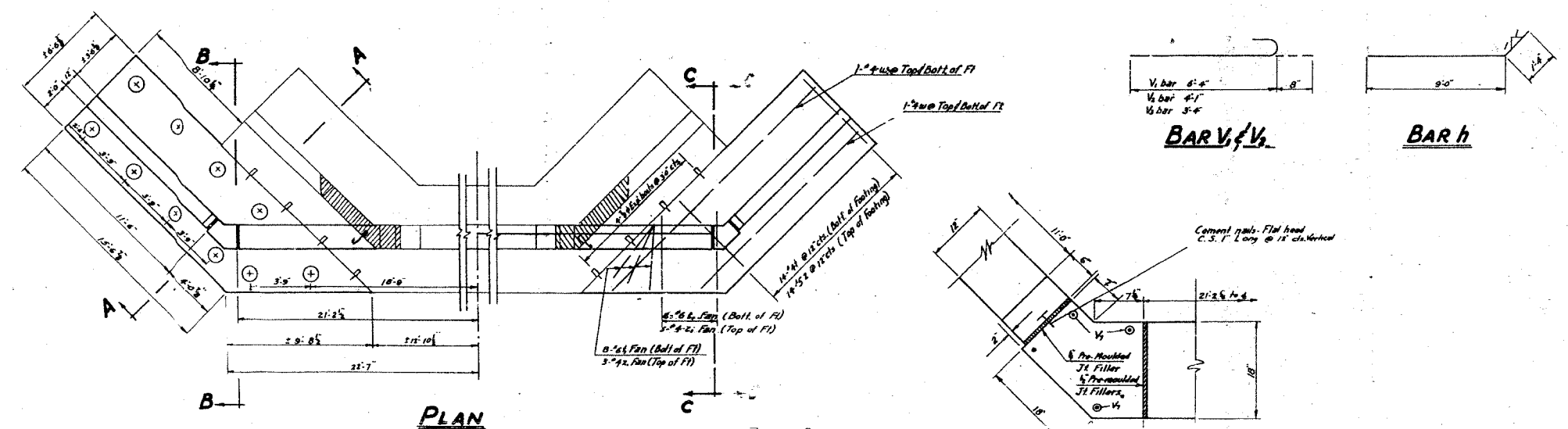
FOR INFORMATION ONLY

STATE OF ILLINOIS
DEPARTMENT OF PUBLIC WORKS & BUILDINGS
DIVISION OF HIGHWAYS

ROUTE NO.	SECTION	COUNTY	TOTAL SHEETS	SHEET NO.
105 BR	105 BY	Whiteside	9	8
SHEET NO. 3				
3 SHEETS				



ELEVATION



PLAN

CORNER DETAIL

**BILL OF MATERIALS
2 ABUTMENTS**

Bars	No.	Size	Length	Shape
V	40	4	7'-6"	—
V ₁	48	6	7'-0"	—
V ₂	44	6	4'-9"	—
V ₃	40	6	4'-0"	—
V ₄	24	4	8'-6"	—
V ₅	16	4	7'-6"	—
V ₆	16	4	6'-9"	—
V ₇	52	4	5'-9"	—
f	56	4	6'-3"	—
h	56	6	1'-6"	—
Z	56	5	6'-3"	—
Z ₁	32	4	4'-6"	—
h	52	4	10'-6"	—
h	72	4	11'-0"	—
W	8	4	18'-3"	—
W ₁	8	4	16'-0"	—
m ₁	18	4	5'-0"	—
Class x Concrete				Cu yds 71.4
Reinf Bars				lbs 3950
Expansion Bolts				Each 36
Masonry Removal				Cu yds 2.0
Untreated Timber Piles Lin.Ft.				780
Test Piles				Each one

DETAIL OF EXPANSION BOLT

APPROVED: *[Signature]*
 EXAMINED: *[Signature]*
 CHECKED: *[Signature]*
 D.P.W. E.M.F. R. Rash
 C. ED. *[Signature]*

MAR 4 1955

American Double Unit Exp. Bolt or Equal

6" Old stud, 12" New stud

FILE DATA

12 Untreated Piles
 Est. Length 20.0
 Min. Capacity — 20 Tons
 No. Required — 40

**ABUTMENTS
SBI RT 86 SEC 105 BY
WHITESIDE COUNTY
STA. 229+82**

281/105 BR 2 SECTION 105-BY WHITESIDE CO. DIST. 2