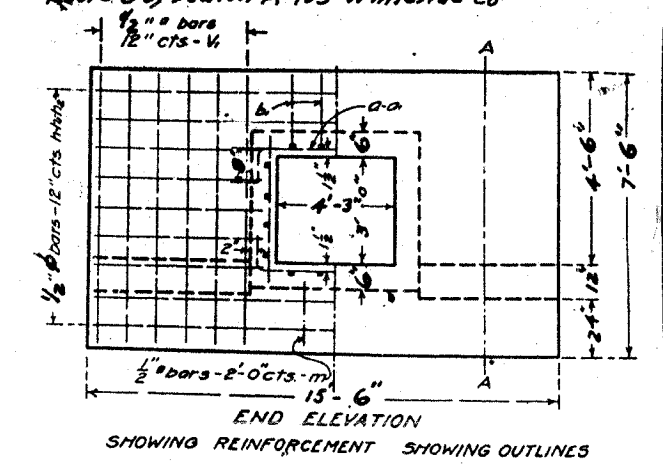
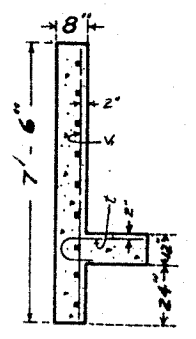


FED. ROAD DIST. NO.	STATE	FED. AID PROJ. NO.	FISCAL YEAR	SHEET NO.	TOTAL SHEETS
7	ILL	121	1928	74	83

FED. ROAD DIST. NO.	STATE	FED. AID PROJ. NO.	FISCAL YEAR	SHEET NO.	TOTAL SHEETS
7	ILL	121	1928	74	83



ILD TOPS OF HEAD-WALLS
REL TO GRADE LINE.

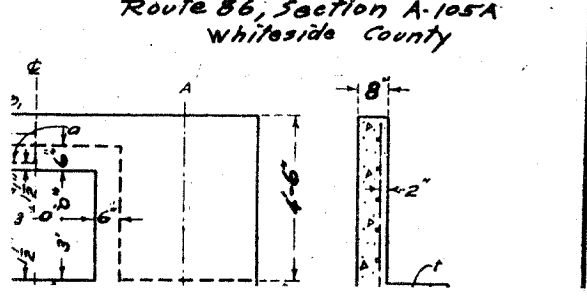


Bars	No.	Size	Length
V	186	1/2"	32'-9"
W	24	1/2"	7'-0"
n	6	1/2"	15'-0"
h	10	1/2"	8'-0"
h2	10	1/2"	6'-0"
a	482	1/2"	5'-0"
a	28	1/2"	6'-6"
b	32	1/2"	25'-0"
b	20	1/2"	20'-6"
l	24	1/2"	4'-6"
m	2	1/2"	5'-0"
Steel-Lbs.			3870
Concrete-Cu.Yds.			31.6

Class A concrete to be used throughout. Proportions 1:2 1/2:4. Use 'm' bars in downstream headwall only.

Sta. 398+00
S.R. Route 86 sec. 105

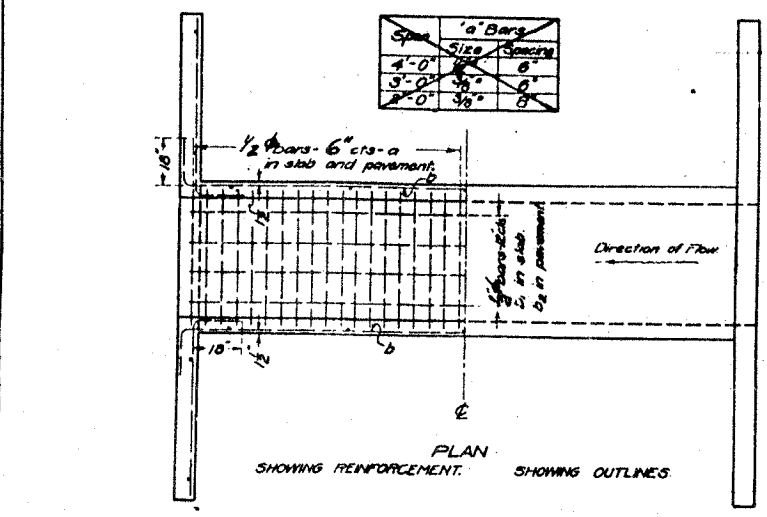
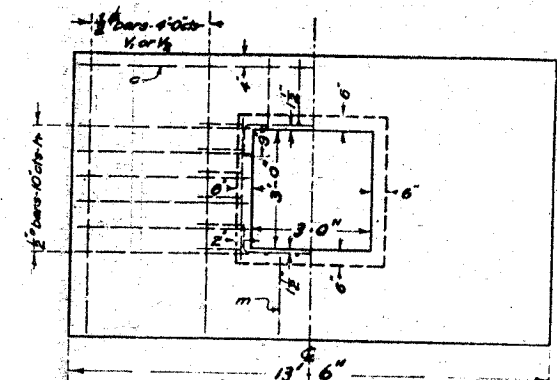
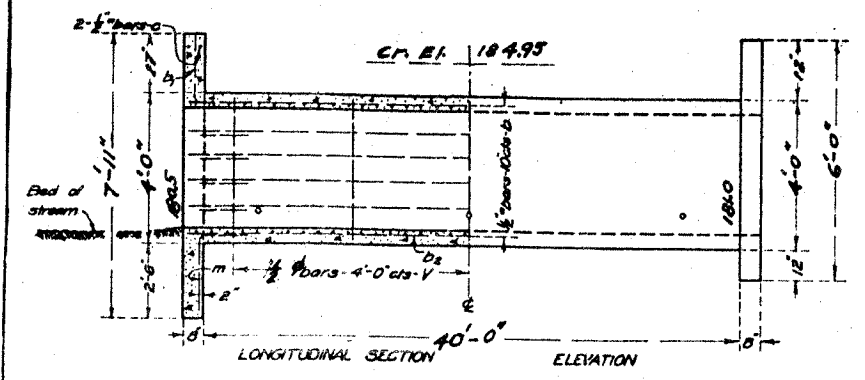
FED. ROAD DIST. NO.	STATE	FED. AID PROJ. NO.	FISCAL YEAR	SHEET NO.	TOTAL SHEETS
7	ILL	121	1928	74	83



P.I. 427+50 El. 183.89
V.C. 200' Ext 0.79
Grades -1.60% & +1.543%

STATE OF ILLINOIS
STATE HIGHWAY DEPARTMENT
REINFORCED CONCRETE BOX CULVERT

FED. ROAD DIST. NO.	STATE	FED. AID PROJ. NO.	FISCAL YEAR	SHEET NO.	TOTAL SHEETS
7	ILL	121	1928	74	83



Note:
Fill over box should be limited to 4'-0."
Maximum Clearance = 4'-0"
Use 'm' bars in downstream headwall only.

ADJUST HEIGHT OF HEAD WALLS TO BE 18 INCHES ABOVE SHOULDER ELEVATION.

BUILD TOPS OF HEAD-WALLS PARALLEL TO GRADE LINE.

Bars	No.	Size	Length
V	22	1/2"	32'-9"
W	4	1/2"	7'-6"
h	4	1/2"	6'-6"
n	20	1/2"	6'-6"
a	164	1/2"	5'-0"
b	20	1/2"	23'-0"
b2	6	1/2"	22'-6"
c	6	1/2"	21'-6"
m	2	1/2"	5'-0"
Steel-Lbs.			1370
Concrete-Cu.Yds.			14.6

Class A concrete to be used throughout
Proportions 1 - 2 1/2 - 4

Sta. 428+10
Rte 86 sec. 105
Whiteside County

APPROVED: [Signature]
DESIGNED: [Signature]
CHECKED: [Signature]
DATE: [Date]

Grade 0.00%

Radius 2864.93
Super 1/16 : 1
" @ Culvert 0.132 : 1
P.C. 372+45.2

STATE OF ILLINOIS
DEPARTMENT OF PUBLIC WORKS & BUILDINGS
DIVISION OF HIGHWAYS

FED. ROAD DIST. NO.	STATE	FED. AID PROJ. NO.	FISCAL YEAR	SHEET NO.	TOTAL SHEETS
7	ILL	121	1928	74	83

