

| F.A.I. RTE. | SECTION | COUNTY | TOTAL SHEETS | SHEET NO. |
|---------------------|---------|---------------------------|--------------|-----------|
| 39 | | WINNEBAGO | 317 | 13 |
| STA. | | TO STA. | | |
| FED. ROAD DIST. NO. | | ILLINOIS FED. AID PROJECT | | |

HORIZONTAL & VERTICAL CONTROL

Chain I39 contains:
60008 CUR 60240 CUR 60250 60013 CUR 60220 CUR 60230 60005

Beginning chain I39 description

Point 60008 N 2,011,380.4770 E 2,606,329.4270 Sta 2425+72.2885

Course from 60008 to PC 60240 359° 01' 12.4886" Dist 3,971.1041'

Curve Data

Curve 60240
P.I. Station 2483+31.7280 N 2,017,139.0743 E 2,606,230.9347
Delta = 50° 10' 36.9097" (RT)
Degree = 1° 30' 00.0405"
Tangent = 1,788.3355'
Length = 3,345.1029'
Radius = 3,819.6900'
External = 397.9130'
Long Chord = 3,239.2271'
Mid. Ord. = 360.3716'
P.C. Station 2465+43.3926 N 2,015,351.0004 E 2,606,261.5171
P.T. Station 2498+88.4955 N 2,018,307.6791 E 2,607,584.6357
C.C. N 2,015,416.3210 E 2,610,080.6485

Course from PT 60240 to PC 60250 49° 11' 49.3983" Dist 1,182.2008'

Curve Data

Curve 60250
P.I. Station 2523+49.4771 N 2,019,915.8310 E 2,609,447.5040
Delta = 48° 06' 36.2454" (LT)
Degree = 2° 00' 00.0226"
Tangent = 1,278.7808'
Length = 2,405.4959'
Radius = 2,864.7800'
External = 272.4552'
Long Chord = 2,335.4485'
Mid. Ord. = 248.7937'
P.C. Station 2510+70.6963 N 2,019,080.1995 E 2,608,479.5162
P.T. Station 2534+76.1922 N 2,021,194.3817 E 2,609,471.7629
C.C. N 2,021,248.7276 E 2,606,607.4985

Course from PT 60250 to 60013 1° 05' 13.1679" Dist 3,690.0084'

Point 60013 N 2,024,883.7260 E 2,609,541.7640 Sta 2571+66.2005

Course from 60013 to PC 60220 89° 21' 21.5691" Dist 3,946.4636'

Curve Data

Curve 60220
P.I. Station 2638+27.6676 N 2,024,958.6001 E 2,616,202.8103
Delta = 50° 41' 24.7811" (LT)
Degree = 0° 59' 58.5102"
Tangent = 2,715.0035'
Length = 5,071.1203'
Radius = 5,731.9500'
External = 610.4860'
Long Chord = 4,907.3460'
Mid. Ord. = 551.7242'
P.C. Station 2611+12.6641 N 2,024,928.0836 E 2,613,487.9783
P.T. Station 2661+83.7844 N 2,027,078.4852 E 2,617,899.0800
C.C. N 2,030,659.6715 E 2,613,423.5514

Course from PT 60220 to PC 60230 38° 39' 56.7626" Dist 5,140.6514'

Curve Data

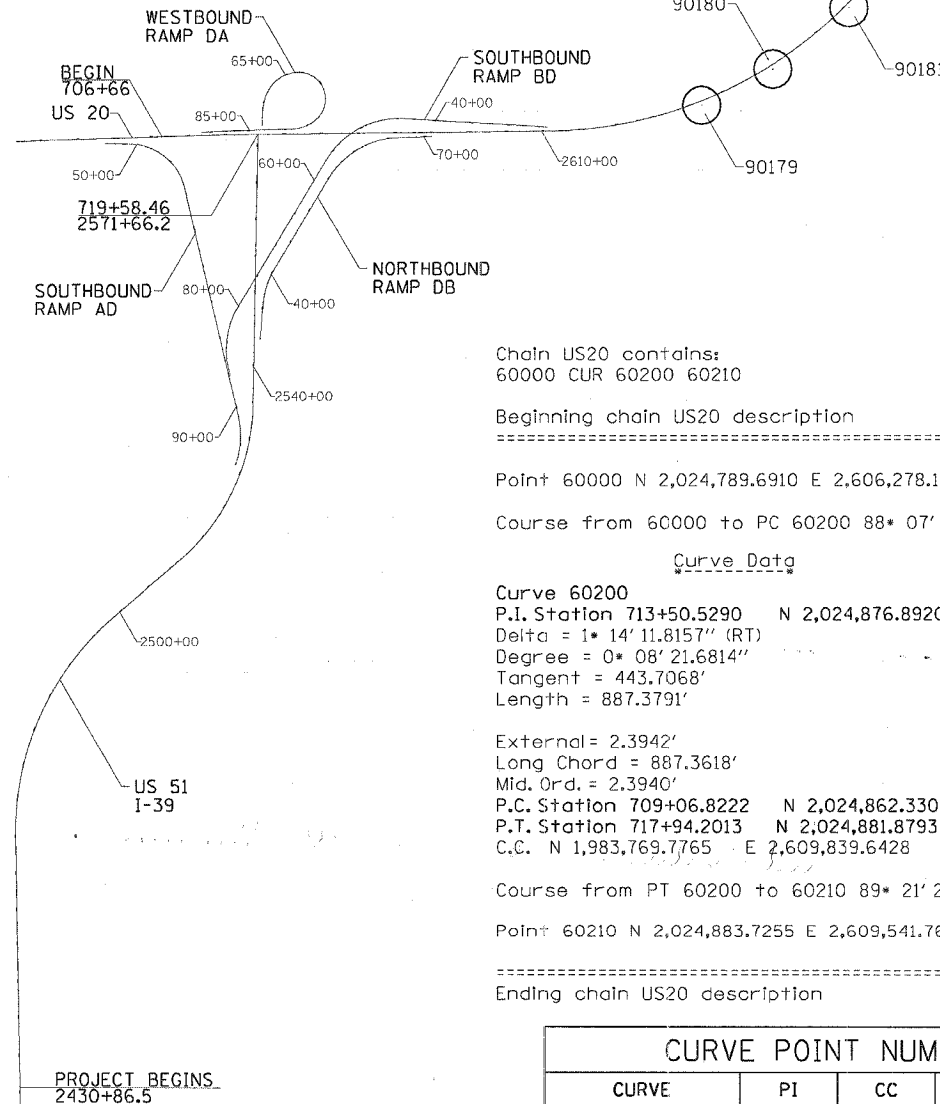
Curve 60230
P.I. Station 2723+93.8287 N 2,031,927.3116 E 2,621,778.9682
Delta = 17° 40' 53.0331" (LT)
Degree = 0° 49' 59.9754"
Tangent = 1,069.3929'
Length = 2,121.7852'
Radius = 6,875.5500'
External = 82.6674'
Long Chord = 2,113.3759'
Mid. Ord. = 81.6852'
P.C. Station 2713+24.4358 N 2,031,092.3255 E 2,621,110.8369
P.T. Station 2734+46.2210 N 2,032,925.7804 E 2,622,161.9320
C.C. N 2,035,388.0059 E 2,615,742.3811

Course from PT 60230 to 60005 20° 59' 03.7295" Dist 2,281.9626'

Point 60005 N 2,035,056.3990 E 2,622,979.1330 Sta 2757+28.1835

Ending chain I39 description

| CURVE POINT NUMBERS | | | | |
|---------------------|-------|-------|-------|-------|
| CURVE | PI | CC | PC | PT |
| 60240 | 60240 | 60241 | 60242 | 60243 |
| 60250 | 60250 | 60251 | 60252 | 60253 |
| 60220 | 60220 | 60221 | 60222 | 60223 |
| 60230 | 60230 | 60231 | 60232 | 60233 |



Chain US20 contains:
60000 CUR 60200 60210

Beginning chain US20 description

Point 60000 N 2,024,789.6910 E 2,606,278.1030 Sta 686+93.3641

Course from 60000 to PC 60200 88° 07' 09.7280" Dist 2,213.4581'

Curve Data

Curve 60200
P.I. Station 713+50.5290 N 2,024,876.8920 E 2,608,933.8366
Delta = 1° 14' 11.8157" (RT)
Degree = 0° 08' 21.6814"
Tangent = 443.7068'
Length = 887.3791'

External = 2.3942'
Long Chord = 887.3618'
Mid. Ord. = 2.3940'

P.C. Station 709+06.8222 N 2,024,862.3307 E 2,608,490.3689
P.T. Station 717+94.2013 N 2,024,881.8793 E 2,609,377.5153
C.C. N 1,983,769.7765 E 2,609,839.6428

Course from PT 60200 to 60210 89° 21' 21.5438" Dist 164.2588'

Point 60210 N 2,024,883.7255 E 2,609,541.7637 Sta 719+58.4600

Ending chain US20 description

| CURVE POINT NUMBERS | | | | |
|---------------------|-------|-------|-------|-------|
| CURVE | PI | CC | PC | PT |
| 60200 | 60200 | 60201 | 60202 | 60203 |

Chain SBRBD contains:
60016 CUR 60310 CUR 60320 CUR 60330 60017

Beginning chain SBRBD description

Point 60016 N 2,024,983.8970 E 2,613,444.0330 Sta 25+00.0000

Course from 60016 to PC 60310 273° 21' 46.5520" Dist 1,922.0136'

Curve Data

Curve 60310
P.I. Station 51+26.6997 N 2,025,137.9806 E 2,610,821.8565
Delta = 62° 29' 42.1601" (LT)
Degree = 4° 56' 00.0143"
Tangent = 704.6861'
Length = 1,266.7904'
Radius = 1,161.4000'
External = 197.0670'
Long Chord = 1,204.9206'
Mid. Ord. = 168.4793'
P.C. Station 44+22.0136 N 2,025,096.6433 E 2,611,525.3292
P.T. Station 56+88.8040 N 2,024,533.1114 E 2,610,460.3101
C.C. N 2,023,937.2433 E 2,611,457.2008

Course from PT 60310 to PC 60320 210° 52' 04.3919" Dist 2,311.2200'

Curve Data

Curve 60320
P.I. Station 84+07.9235 N 2,022,199.1481 E 2,609,065.2380
Delta = 38° 42' 14.1898" (LT)
Degree = 4° 56' 00.0143"
Tangent = 407.8995'
Length = 784.5387'
Radius = 1,161.4000'
External = 69.5476'
Long Chord = 769.7070'
Mid. Ord. = 65.6182'
P.C. Station 80+00.0240 N 2,022,549.2697 E 2,609,274.5150
P.T. Station 87+84.5627 N 2,021,795.0575 E 2,609,120.8506
C.C. N 2,021,953.4016 E 2,610,271.4057

Curve Data

Curve 60330
P.I. Station 88+07.7923 N 2,021,772.0447 E 2,609,124.0177
Delta = 4° 38' 36.1045" (LT)
Degree = 9° 59' 59.8612"
Tangent = 23.2296'
Length = 46.4338'
Radius = 572.9600'
External = 0.4707'
Long Chord = 46.4211'
Mid. Ord. = 0.4703'
P.C. Station 87+84.5627 N 2,021,795.0575 E 2,609,120.8506
P.T. Station 88+30.9965 N 2,021,749.3640 E 2,609,129.0374
C.C. N 2,021,873.1742 E 2,609,688.4604

Course from PT 60330 to 60017 167° 31' 14.0976" Dist 159.9998'

Point 60017 N 2,021,593.1443 E 2,609,163.6116 Sta 89+90.9964

Ending chain SBRBD description

| CURVE POINT NUMBERS | | | | |
|---------------------|-------|-------|-------|-------|
| CURVE | PI | CC | PC | PT |
| 60310 | 60310 | 60311 | 60312 | 60313 |
| 60320 | 60320 | 60321 | 60322 | 60323 |
| 60330 | 60330 | 60331 | 60332 | 60333 |

| REVISIONS | |
|-----------|------|
| NAME | DATE |
| | |
| | |
| | |
| | |
| | |
| | |
| | |
| | |
| | |

ILLINOIS DEPARTMENT OF TRANSPORTATION

SCALE: VERT.
HORIZ.
DATE

DRAWN BY
CHECKED BY