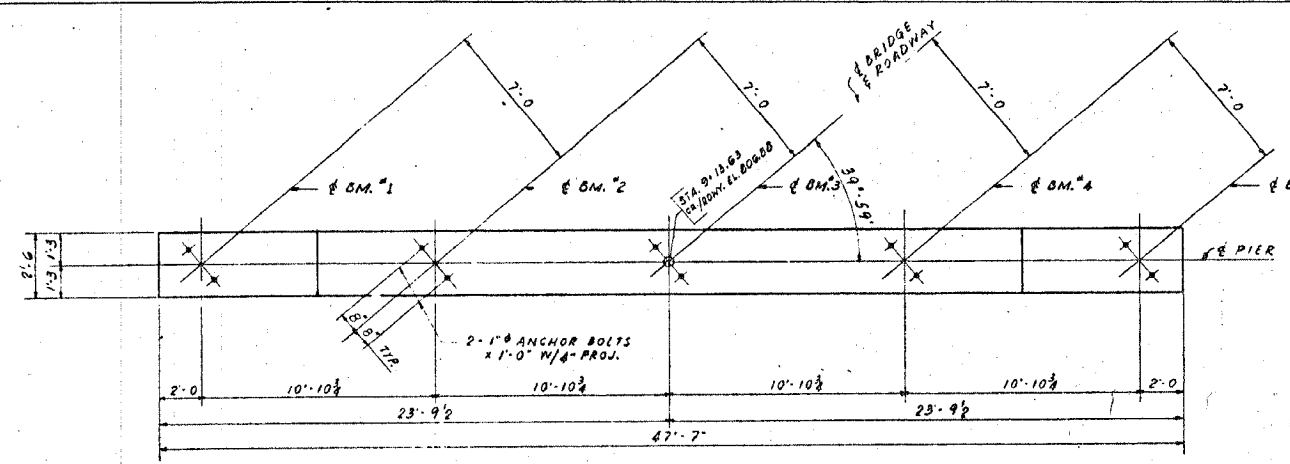
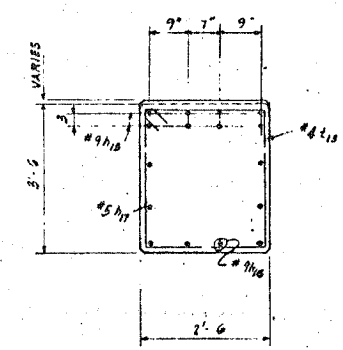


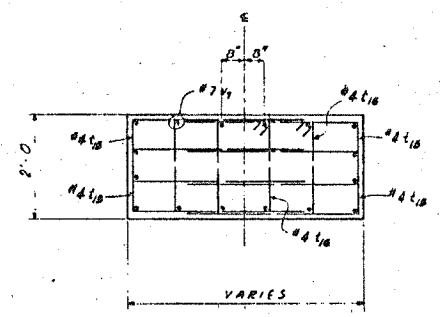
* FAI 39 / FAP 301 (1-39 / US20)		CONTRACT NO. 64596	
** (201-2,201-3) RS & (4,4-1,5) RS-1		TOTAL SHEETS	SHEET NO.
SECTION	COUNTY	317	94
WUNNEBAGO			
STA.	TO STA.		
FED. ROAD DIST. NO.	ILLINOIS	FED. AID PROJECT	



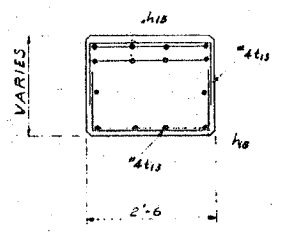
TOP PLAN
SCALE 1/4" = 1'-0"



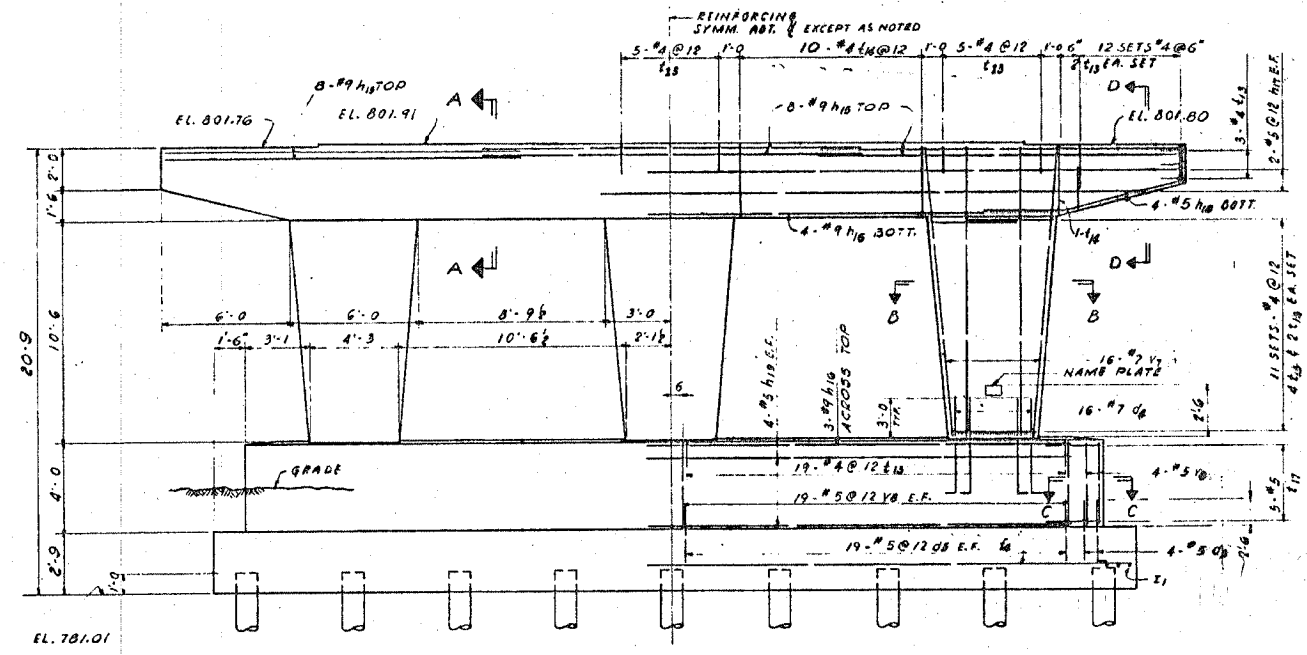
SECTION "A-A"



SECTION "B-B"



SECTION "D-D"

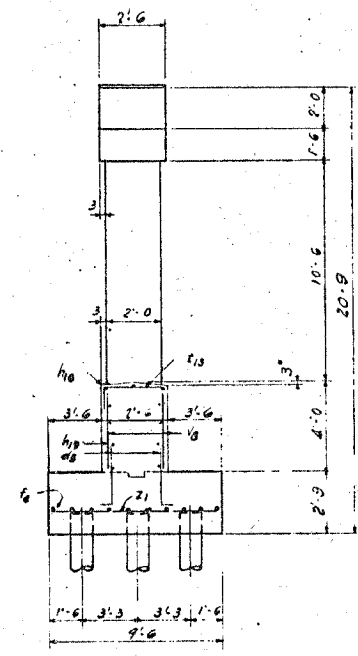


DIMENSIONS

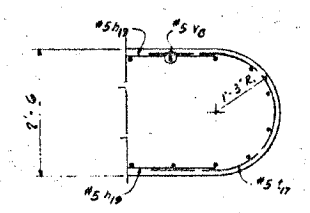
ELEVATION
SCALE 1/4" = 1'-0"

REINFORCING

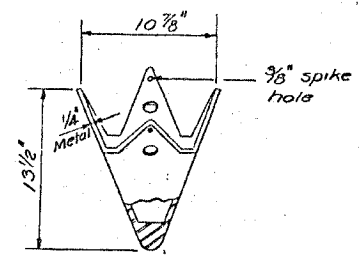
NOTE: PLACE A NAME PLATE ON THE SOUTH FACE AT THE EAST END.



END VIEW



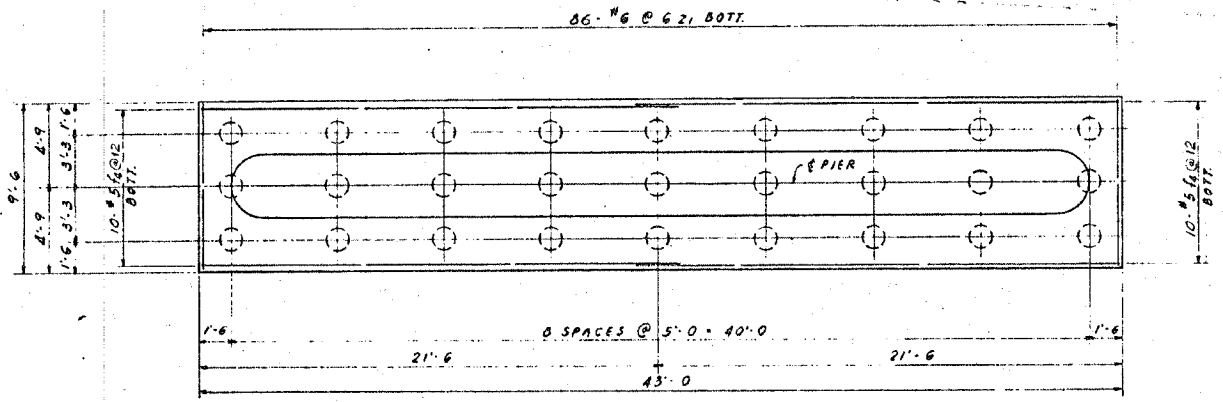
SECTION "C-C"



METAL PILE SHOE
(Total number req'd. = 81)

NOTES
FOR GENERAL NOTES SEE SH. #2.
FOR REINFORCING SCHEDULE SEE SH. #15

PILE DATA
20 TON CRESOTED TIMBER PILES
NUMBER REQ'D. - 27
ESTIMATED LENGTH - 10 FT.



FOOTING PLAN

QUANTITIES FOR PIER 1		
ITEM	UNIT	TOTAL
CLASS "X" CONCRETE	CU. YDS.	78.7
REINFORCEMENT BARS	LBS.	8950
CRESOTED PILES	LIN. FT.	270
METAL SHOES	EACH	27
CLASS "A" EXCAVATION FOR STRUCTURES	CU. YDS.	47

REVISIONS	
NAME	DATE

ILLINOIS DEPARTMENT OF TRANSPORTATION

SCALE: VERT. _____
HORIZ. _____

DATE _____

DRAWN BY _____
CHECKED BY _____

PIER 1
NORTH PIER AT
PERRYVILLE ROAD
SN 101-0098

PLOT DATE = Tue Dec 21 09:12:37 2004
FILE NAME = c:\perryville\sn101-0098\125000.plt.dgn
PLOT SCALE = 50.0000 1/4"
REFERENCE = BRP*