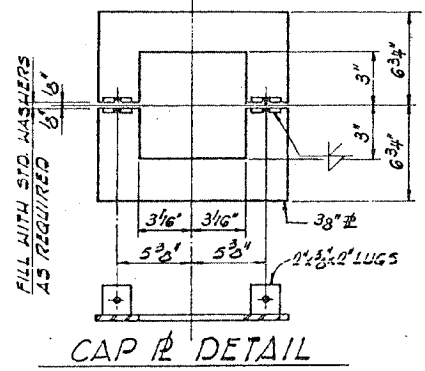


F.A. RTE.	SECTION	COUNTY	TOTAL SHEETS	SHEET NO.
---	---	WINNEBAGO	317	104
STA.	TO STA.			
FED. ROAD DIST. NO.	ILLINOIS	FED. AID PROJECT		



**GENERAL NOTES**

ALL REINFORCEMENT BARS SHALL BE LAPPED 24 DIAMETERS UNLESS OTHERWISE SHOWN.

FASTENERS SHALL BE HIGH STRENGTH BOLTS. BOLTS 3/4" DIAMETER, OPEN HOLES 13/16" DIAMETER, UNLESS OTHERWISE NOTED.

CALCULATED WEIGHT OF STRUCTURAL STEEL = 343,530 LBS.

THE BASIC LEAD SILICO CHROMATE PAINT SYSTEM SHALL BE USED FOR SHOP AND FIELD PAINTING OF STRUCTURAL STEEL.

FIELD WELDING OF CONSTRUCTION ACCESSORIES WILL NOT BE PERMITTED TO THE BOTTOM FLANGE OF BEAMS OR GIRDERS NOR TO THE TOP FLANGE FOR A DISTANCE EQUAL TO ONE-FOURTH THE SPAN LENGTH EACH WAY FROM THE PIER SUPPORTS. FIELD WELDING IN OTHER AREAS WILL BE PERMITTED ONLY WHEN APPROVED BY THE ENGINEER.

ANCHOR BOLTS SHALL BE SET BEFORE BOLTING DIAPHRAGMS OVER SUPPORTS.

SLOPEWALL SHALL BE REINFORCED WITH WELDED WIRE FABRIC 6" X 6" MESH, WEIGHING 58 LBS. PER 100 SQ. FT.

THE CONTRACTOR SHALL DRIVE ONE STEEL TEST PILE IN A PERMANENT LOCATION AT EACH ABUTMENT AND PIER AS DIRECTED BY THE ENGINEER BEFORE ORDERING THE REMAINDER OF THE PILES.

THE EMBANKMENT CONFIGURATION SHOWN SHALL BE THE MINIMUM EMBANKMENT THAT MUST BE CONSTRUCTED PRIOR TO CONSTRUCTION OF THE ABUTMENTS.

THE CONCRETE RAIL SECTION ABOVE THE MANDATORY CONSTRUCTION JOINT AT TOP OF THE SLAB SHALL BE CONSTRUCTED OF CLASS X CONCRETE, EXCEPT THE AGGREGATES SHALL CONFORM TO THE REQUIREMENTS OF HANDRAIL CONCRETE.

PROTECTIVE COAT SHALL NOT BE APPLIED TO SURFACES TO WHICH WATERPROOFING MEMBRANE SYSTEM IS APPLIED.

BEARING SEAT SURFACES SHALL BE CONSTRUCTED OR ADJUSTED TO THE DESIGNATED ELEVATIONS WITHIN A TOLERANCE OF ± 1/8 INCH. ADJUSTMENT SHALL BE MADE EITHER BY GRINDING THE SURFACE OR BY SHIMMING THE BEARING. TWO 1/8" ADJUSTING SHIMS, OF THE DIMENSIONS OF THE BOTTOM BEARING PLATE, SHALL BE PROVIDED FOR EACH BEARING IN ADDITION TO ALL OTHER PLATES OR SHIMS.

THE MAIN LOAD CARRYING COMPONENTS SUBJECT TO TENSILE STRESS SHALL CONFORM TO THE SUPPLEMENTAL REQUIREMENTS FOR NOTCH TOUGHNESS ZONE 2. THESE COMPONENTS ARE THE TENSION FLANGES AS DESIGNATED IN THE ELEV. VIEW, WEBS AND ALL SPLICE PLATE MATERIAL OF THE STEEL GIRDERS.

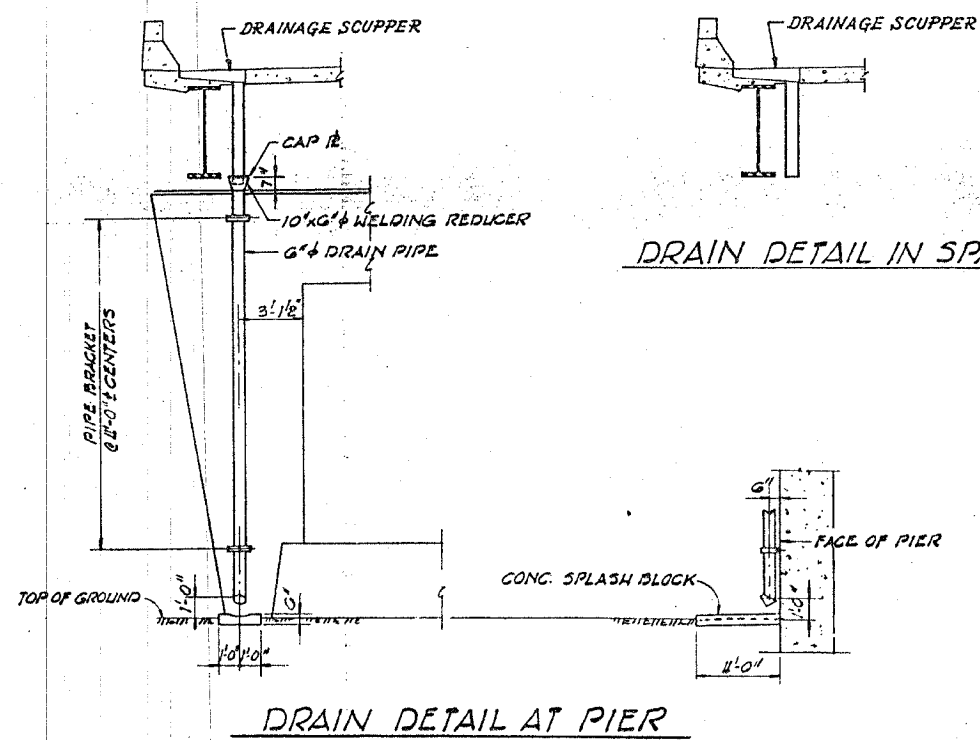
FOR BORING DATA, SEE SPECIAL PROVISIONS.

All Reinforcement Bars In The Deck Slab Of Spans 2#3 Shall Conform To The Requirements Of AASHTO M31 Gr 60 Or AASHTO M53 Gr 60.

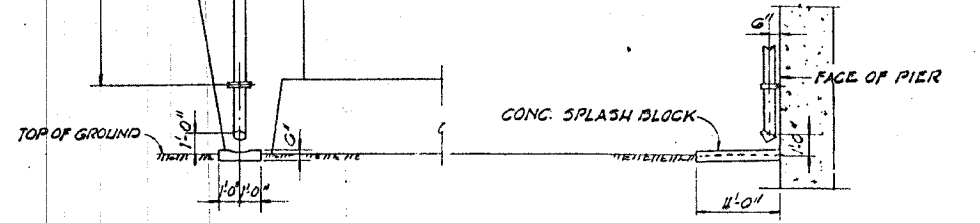
**BILL OF MATERIAL**

ITEM	UNIT	SUB	SUPER	TOTAL
BITUMINOUS CONCRETE SURFACE COURSE, MIXTURE E, CLASS I	TON	-	115	115
STRUCTURE EXCAVATION	CU.YD.	108	-	108
PROTECTIVE COAT	SQ.YD.	-	183	183
CLASS X CONCRETE	CU.YD.	375.2	454.0	829.2
STUD SHEAR CONNECTORS	EACH	-	3,234	3,234
FURNISHING & ERECTING STRUCTURAL STEEL	L.SUM	-	0.54	0.54
ALUMINUM RAILING	LIN.FT.	-	489	489
REINFORCEMENT BARS	LBS.	43,980	116,450	160,430
STEEL PILES, HP 8X36	LIN.FT.	2,235	-	2,235
TEST PILE STEEL, HP 8X36	EACH	3	-	3
NAME PLATES	EACH	1	-	1
SLOPE WALL, 4 INCH	SQ.YD.	504	-	504
WATERPROOF MEMBRANE SYSTEM	SQ.YD.	-	1,392	1,392
PREFORMED JOINT SEALER (2-1/2")	LIN.FT.	-	109	109
SAND BACKFILL	CU.YD.	342	-	342
DRAIN PIPE, 6 INCH	LIN.FT.	34	18	52
DRAINAGE SCUPPERS	EA.	-	4	4

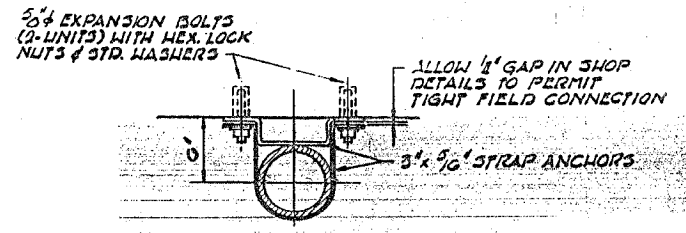
\* Not in this contract To be constructed under Paving Section



DRAIN DETAIL IN SPAN



DRAIN DETAIL AT PIER



NOTE: GALVANIZE ASSEMBLY AFTER FABRICATION  
 PIPE BRACKET

**DRAINAGE NOTES**

MATERIALS. SCUPPERS SHALL BE IN ACCORDANCE WITH DETAILS ON SHEET 15. DRAIN PIPE SHALL BE STANDARD WEIGHT PIPE CONFORMING TO THE REQUIREMENTS OF THE "STANDARD SPECIFICATIONS FOR WELDED AND SEAMLESS STEEL PIPE", ASTM DESIGNATION A53.

STEEL FOR CAP PLATES AND BRACKETS SHALL CONFORM TO THE REQUIREMENTS FOR A.A.S.H.T.O. DESIGNATION M183. THE PIPE BRACKETS SUPPORTING THE DRAIN PIPE TO THE PIER SHALL BE GALVANIZED AFTER FABRICATION IN ACCORDANCE WITH ASTM SPECIFICATION A123. AFTER INSTALLATION, THE PIPE AND ITS SUPPORTS SHALL BE CLEANED AND PAINTED WITH THE FULL BASIC LEAD SILICO CHROMATE PAINT SYSTEM.

METHOD OF MEASUREMENT. THE ACTUAL NUMBER OF LINEAR FEET OF DRAIN PIPE, INCLUDING FITTINGS, FURNISHED AND INSTALLED IN THE WORK, WILL BE MEASURED FOR PAYMENT IN PLACE ALONG THE CENTERLINE OF THE PIPE FROM END TO END THROUGH ALL FITTINGS.

BASIS OF PAYMENT. DRAIN PIPE WILL BE PAID FOR AT THE CONTRACT UNIT PRICE PER LINEAR FOOT FOR DRAIN PIPE, 6 INCH, WHICH PRICE SHALL BE PAYMENT IN FULL FOR ALL WORK AND MATERIAL, INCLUDING VARIOUS TYPES OF FITTINGS AND SUPPORTS AS REQUIRED TO COMPLETE THE WORK.

NORTH BOUND  
 I-39 PIER OVER  
 US 20 BYPASS  
 SN 101-0135

REVISIONS	
NAME	DATE

ILLINOIS DEPARTMENT OF TRANSPORTATION

SCALE: VERT. \_\_\_\_\_  
 HORIZ. \_\_\_\_\_

DATE \_\_\_\_\_ DRAWN BY \_\_\_\_\_  
 CHECKED BY \_\_\_\_\_

FOR INFORMATION ONLY

PLOT DATE = Tue, Dec 21, 09:12:37 2004  
 FILE NAME = e:\p\projects\112500\112500.dgn  
 PLOT SCALE = 50.0000 / IN.  
 REFERENCE = REF