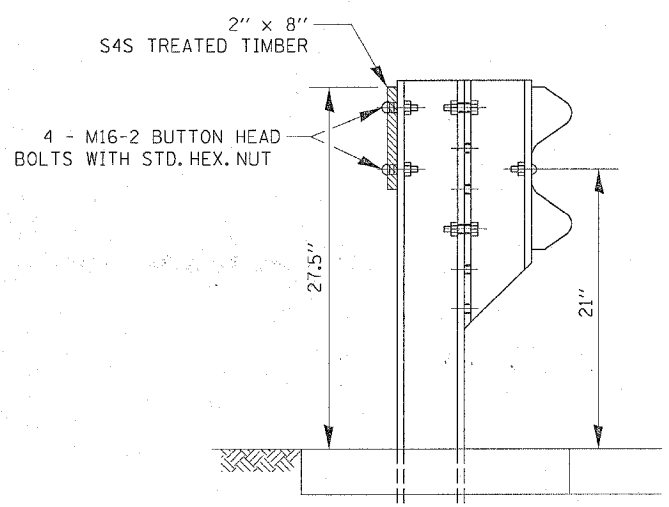
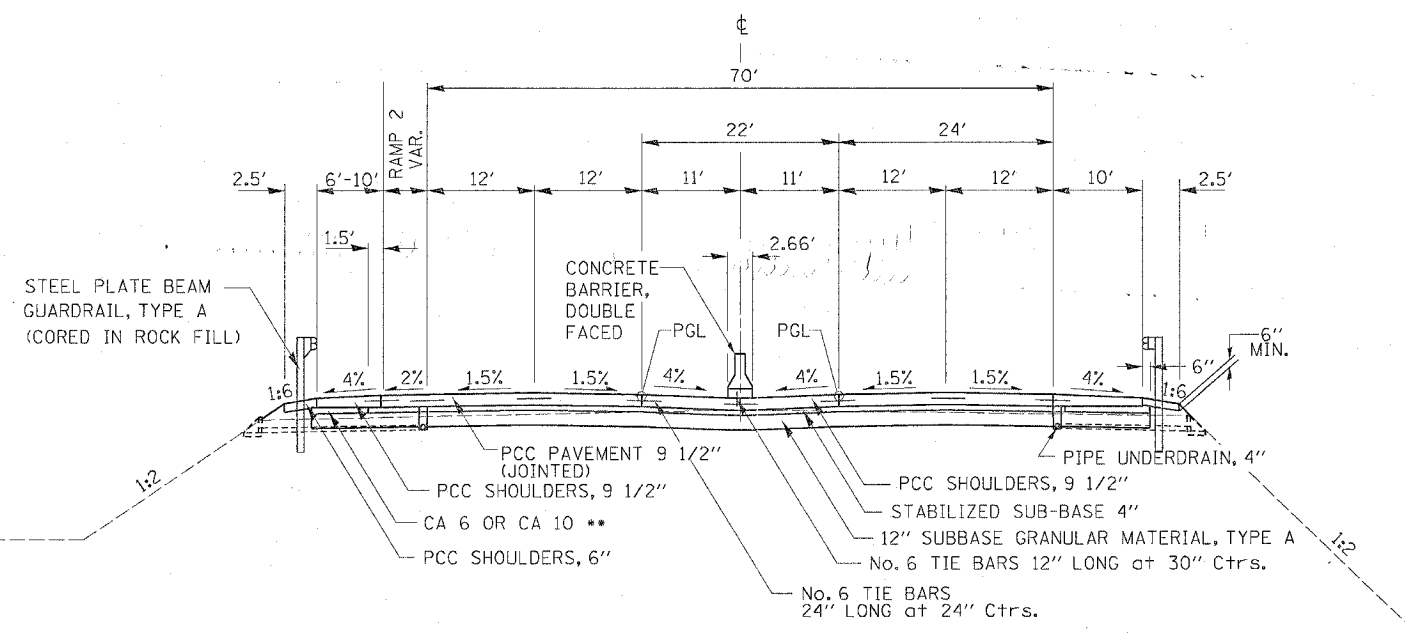


F.A.P. RTE.	SECTION	COUNTY	TOTAL SHEETS	SHEET NO.
595	1-3-K	ROCK ISLAND	476	20
STA.		TO STA.		
FED. ROAD DIST. NO.		ILLINOIS	FED. AID PROJECT	

TYPICAL SECTIONS



RUB RAIL STATIONS
 LT. 381+66 - 382+16
 LT. 363+75 - 364+25



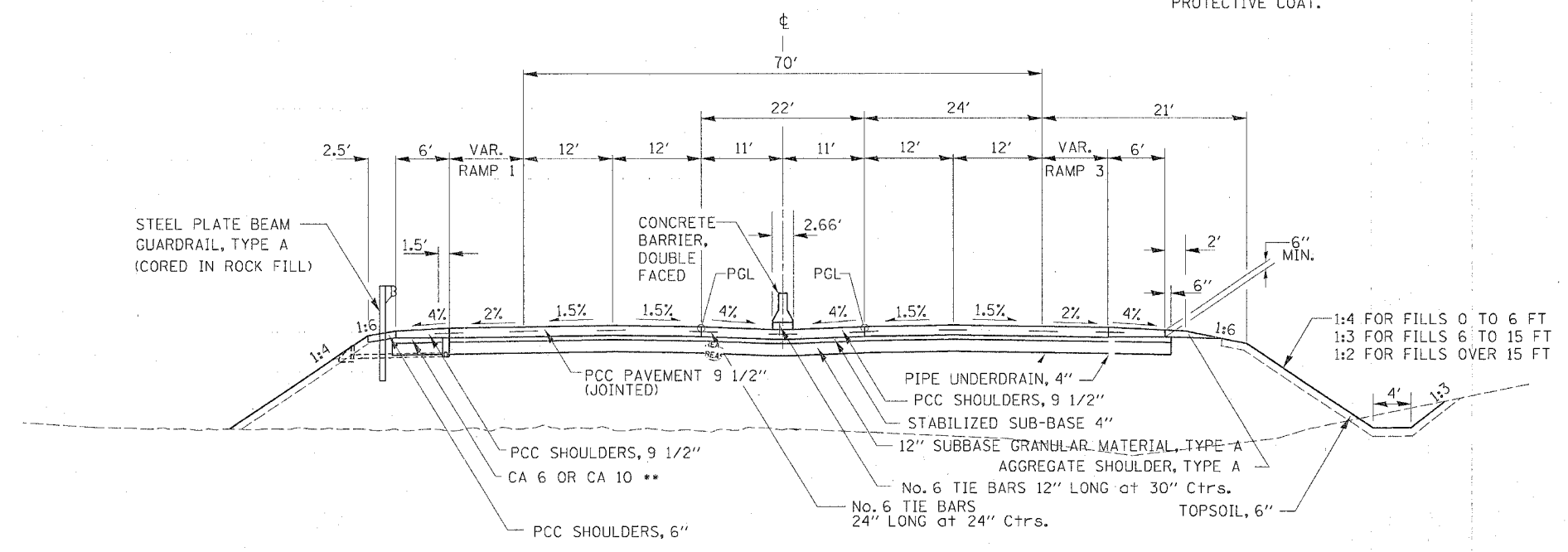
MILAN BELTWAY
 STATION 358+13.68 - 363+16.91

**The cost of CA 6 OR CA 10 to be included in the cost of SUB-BASE GRANULAR MATERIAL, TYPE A

NOTE:
 If PCC PAVEMENT, PCC SHOULDERS, CURB AND GUTTER, OR CONCRETE MEDIANS are constructed after Oct 15 and opened to traffic before April 15, use PROTECTIVE COAT.

STRUCTURAL DESIGN INFORMATION

STRUCTURAL DESIGN TRAFFIC:		Year	2010
PV=	38600	SU=	800
		MU=	800
ROAD/STREET CLASSIFICATION:		Class	1
PERCENT OF STRUCTURAL DESIGN TRAFFIC IN DESIGN LANE:			
P=	32%	S=	45%
		M=	45%
TRAFFIC FACTOR:		Actual TF=	6.03
		PCC PAVEMENT=	9 1/2"
SUBGRADE SUPPORT RATING:			
SSR=	POOR	(Sta. 357+13.68	364+16.91
SSR=	POOR	(Sta. 381+57.89	417+10.16



JOHN DEERE ROAD
 STATION 382+57.89 - 384+49.93