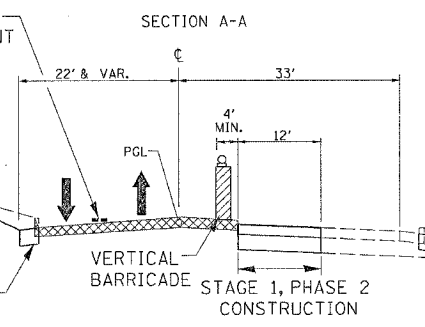
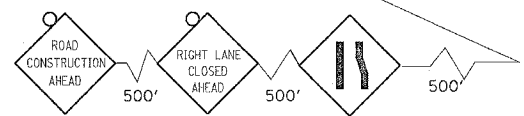
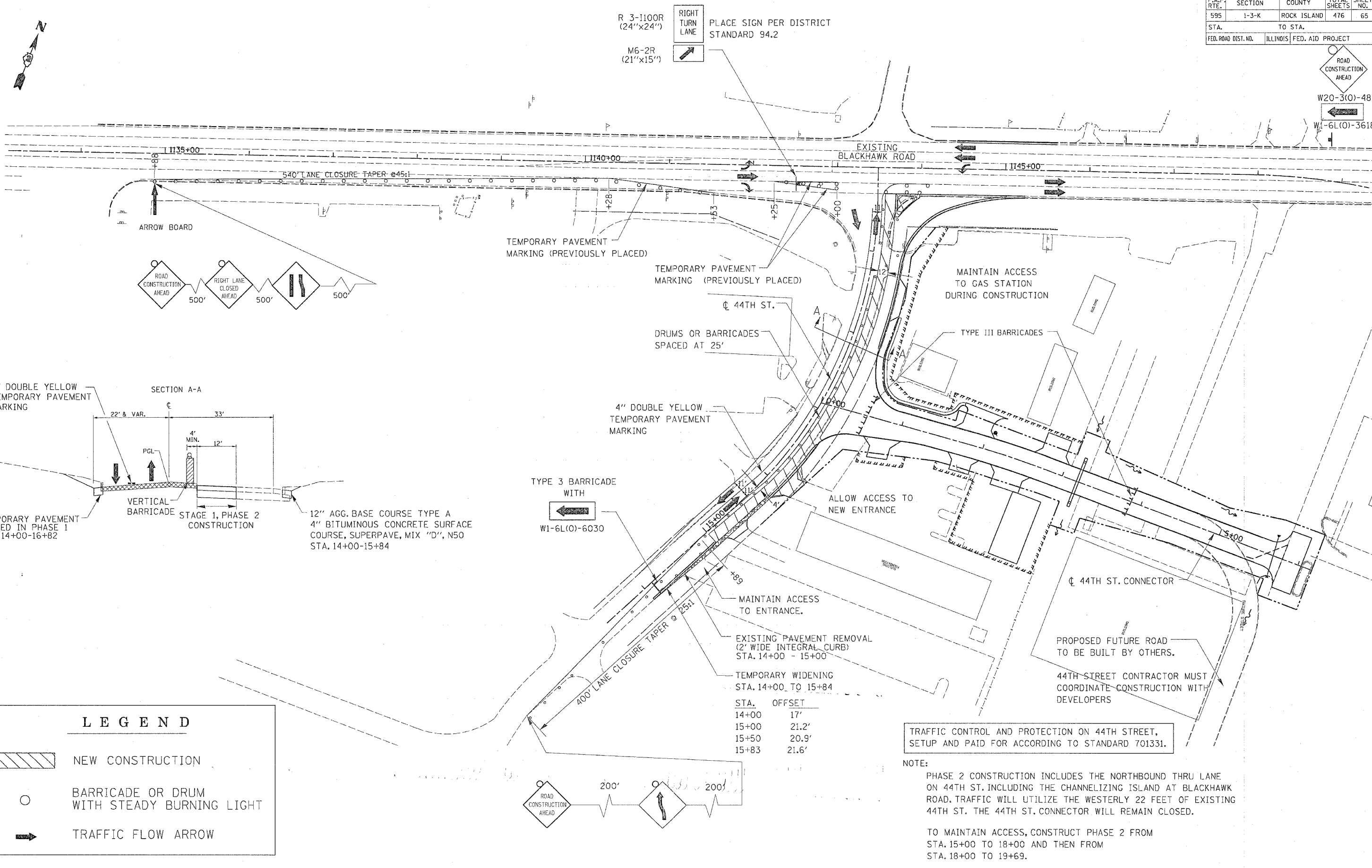
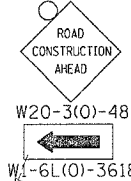


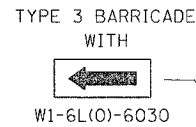
F.A.P. RTE.	SECTION	COUNTY	TOTAL SHEETS	SHEET NO.
595	1-3-K	ROCK ISLAND	476	65
STA.		TO STA.		
FED. ROAD DIST. NO.		ILLINOIS FED. AID PROJECT		



4" DOUBLE YELLOW TEMPORARY PAVEMENT MARKING

VERTICAL BARRICADE STAGE 1, PHASE 2 CONSTRUCTION

12" AGG. BASE COURSE TYPE A
4" BITUMINOUS CONCRETE SURFACE COURSE, SUPERPAVE, MIX "D", N50
STA. 14+00-15+84



STA.	OFFSET
14+00	17'
15+00	21.2'
15+50	20.9'
15+83	21.6'

TRAFFIC CONTROL AND PROTECTION ON 44TH STREET, SETUP AND PAID FOR ACCORDING TO STANDARD 701331.

NOTE:
PHASE 2 CONSTRUCTION INCLUDES THE NORTHBOUND THRU LANE ON 44TH ST. INCLUDING THE CHANNELIZING ISLAND AT BLACKHAWK ROAD. TRAFFIC WILL UTILIZE THE WESTERLY 22 FEET OF EXISTING 44TH ST. THE 44TH ST. CONNECTOR WILL REMAIN CLOSED.

TO MAINTAIN ACCESS, CONSTRUCT PHASE 2 FROM STA. 15+00 TO 18+00 AND THEN FROM STA. 18+00 TO 19+69.

LEGEND

- NEW CONSTRUCTION
- BARRICADE OR DRUM WITH STEADY BURNING LIGHT
- TRAFFIC FLOW ARROW

STAGE 1 (44TH STREET PHASE 2) CONSTRUCTION PLAN