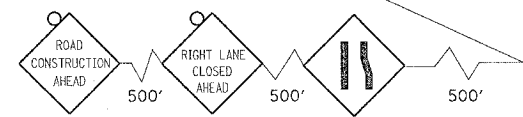
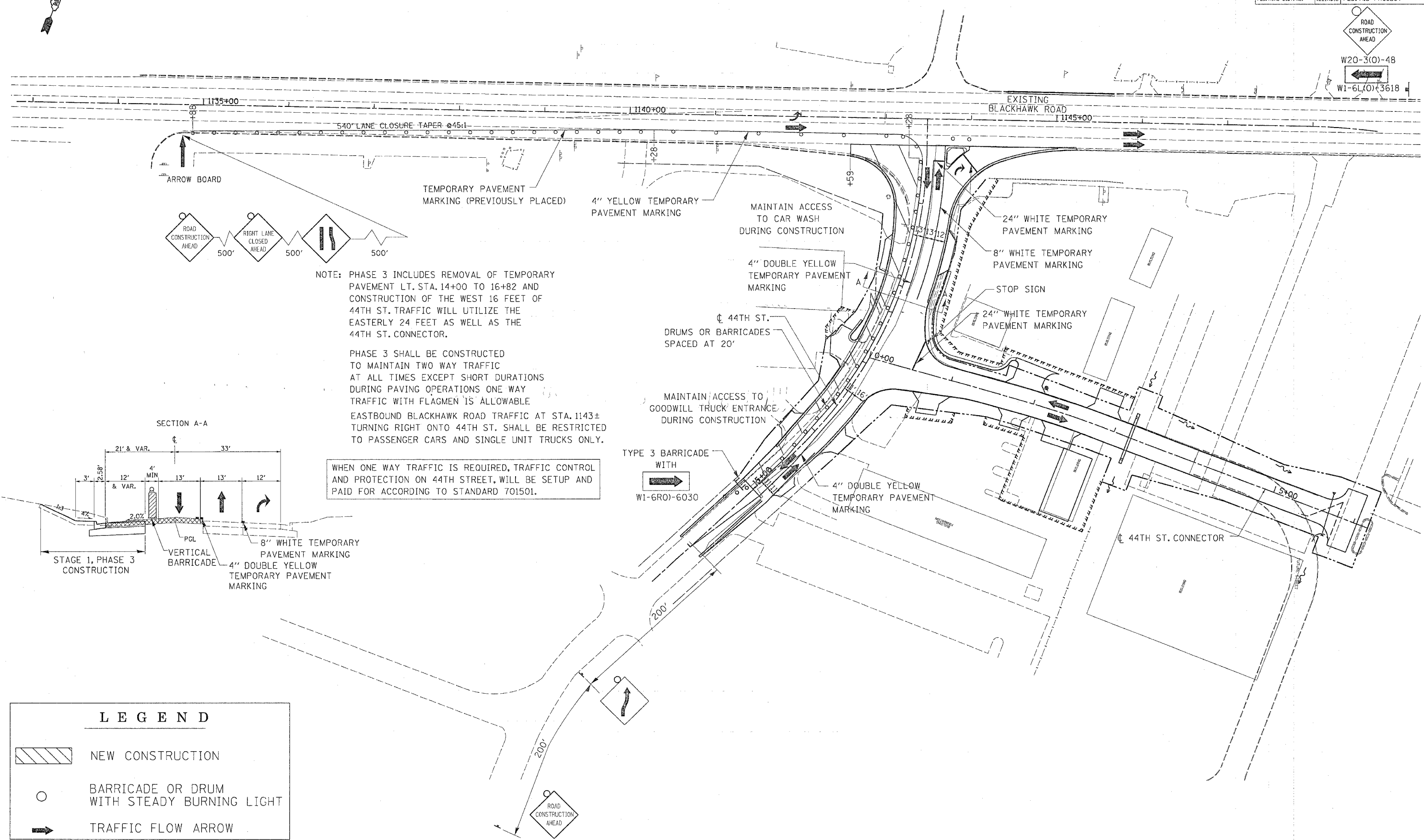
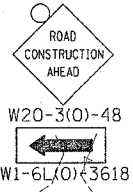


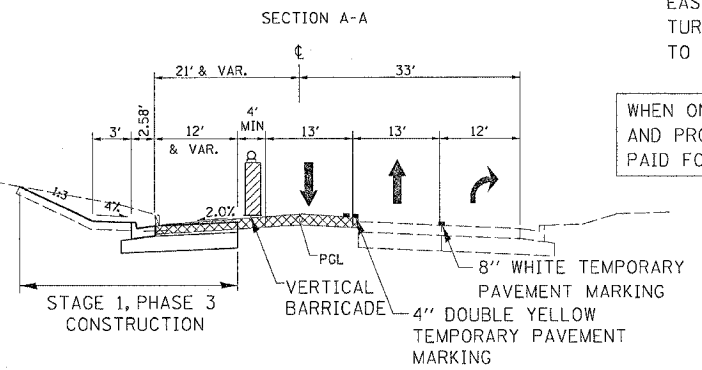
F.A.P. RTE.	SECTION	COUNTY	TOTAL SHEETS	SHEET NO.
595	1-3-K	ROCK ISLAND	476	66
STA.		TO STA.		
FED. ROAD DIST. NO.		ILLINOIS FED. AID PROJECT		



NOTE: PHASE 3 INCLUDES REMOVAL OF TEMPORARY PAVEMENT LT. STA. 14+00 TO 16+82 AND CONSTRUCTION OF THE WEST 16 FEET OF 44TH ST. TRAFFIC WILL UTILIZE THE EASTERLY 24 FEET AS WELL AS THE 44TH ST. CONNECTOR.

PHASE 3 SHALL BE CONSTRUCTED TO MAINTAIN TWO WAY TRAFFIC AT ALL TIMES EXCEPT SHORT DURATIONS DURING PAVING OPERATIONS ONE WAY TRAFFIC WITH FLAGMEN IS ALLOWABLE EASTBOUND BLACKHAWK ROAD TRAFFIC AT STA. 1143± TURNING RIGHT ONTO 44TH ST. SHALL BE RESTRICTED TO PASSENGER CARS AND SINGLE UNIT TRUCKS ONLY.

WHEN ONE WAY TRAFFIC IS REQUIRED, TRAFFIC CONTROL AND PROTECTION ON 44TH STREET, WILL BE SETUP AND PAID FOR ACCORDING TO STANDARD 701501.



LEGEND

	NEW CONSTRUCTION
	BARRICADE OR DRUM WITH STEADY BURNING LIGHT
	TRAFFIC FLOW ARROW