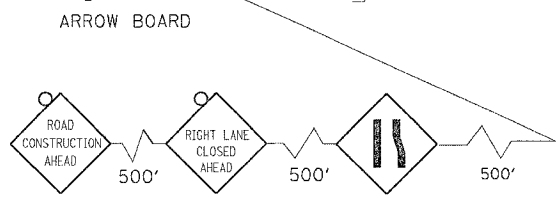
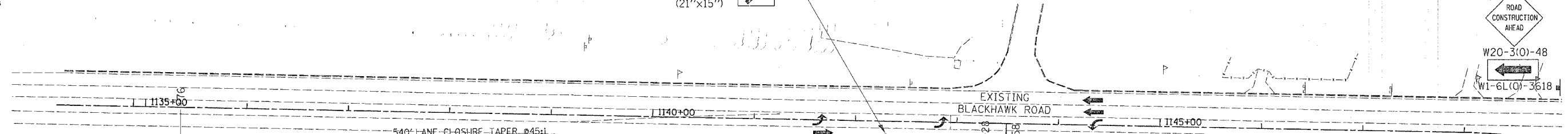


F.A.P. RTE.	SECTION	COUNTY	TOTAL SHEETS	SHEET NO.
595	1-3-K	ROCK ISLAND	476	67
STA.	TO STA.			
FED. ROAD DIST. NO.	ILLINOIS	FED. AID PROJECT		



R 3-1100R (24"x24")
M6-2R (21"x15")
RIGHT TURN LANE
PLACE SIGN PER DISTRICT STANDARD 94.2



4" YELLOW TEMPORARY PAVEMENT MARKING

4" WHITE TEMPORARY PAVEMENT MARKING
MAINTAIN ACCESS TO CAR WASH DURING CONSTRUCTION

STAGE 4 SHALL BE CONSTRUCTED TO MAINTAIN TWO WAY TRAFFIC AT ALL TIMES INCLUDING FULL ACCESS TO 44th ST. CONNECTOR AND COMMERCIAL ENTRANCES.

GAS STATION ENTRANCE TO REMAIN OPEN AT ALL TIMES

END CONSTRUCTION

PREVIOUSLY PLACED TEMPORARY PAVEMENT MARKING

NOTE: PHASE 4 CONSTRUCTION INCLUDES THE MIDDLE 18 FEET OF EXISTING 44TH ST. TRAFFIC IS SPLIT ON EITHER SIDE OF THE CONSTRUCTION.

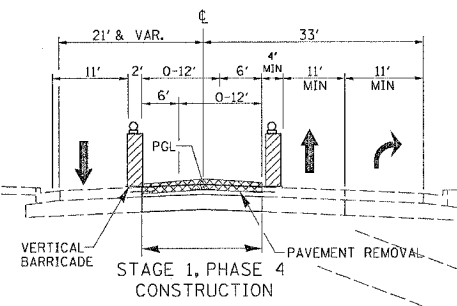
IT WILL BE NECESSARY TO STAGE CONSTRUCT THE INTERSECTION WITH THE 44TH ST. CONNECTOR IN A MANNER THAT ALLOWS ACCESS TO THE CONNECTOR AT ALL TIMES FROM THE SOUTHBOUND LANE OF 44TH ST.

WESTBOUND BLACKHAWK ROAD TRAFFIC AT STA. 1144± TURNING LEFT ONTO 44TH ST. SHALL BE RESTRICTED TO PASSENGER CARS AND SINGLE UNIT TRUCKS ONLY.

ALL CONSTRUCTION ON 44TH ST. MUST BE COMPLETED BEFORE BEGINNING ANY WORK ON THE STAGE 2 TIE-INS TO 52ND AVE. AND JOHN DEERE ROAD.

MAINTAIN ACCESS TO GOODWILL TRUCK ENTRANCE DURING CONSTRUCTION

SECTION A-A



LEGEND

- NEW CONSTRUCTION
- BARRICADE OR DRUM WITH STEADY BURNING LIGHT
- TRAFFIC FLOW ARROW

AFTER PHASE 4 MEDIAN CONSTRUCTION, REMOVE TEMPORARY PAVEMENT PLACED IN PHASE 1 AND 2 AND PLACE INTEGRAL CURB AND GUTTER. RT. STA. 14+00-15+84 AND LT. STA. 14+00-15+00.