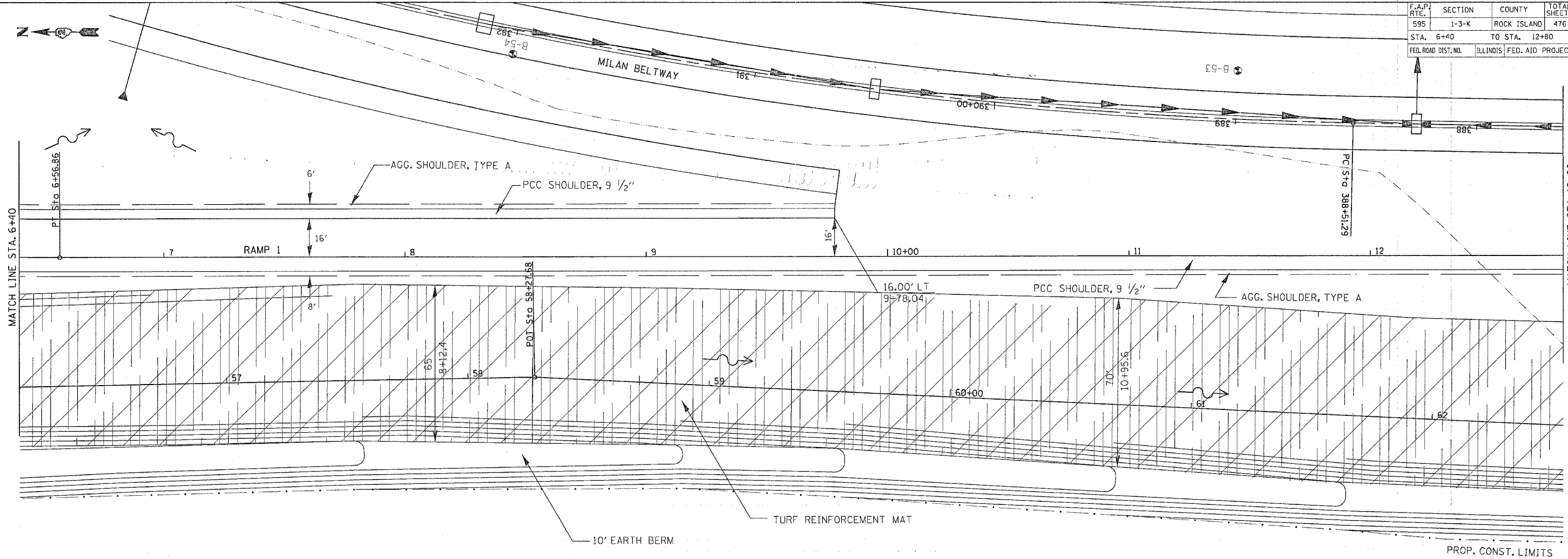
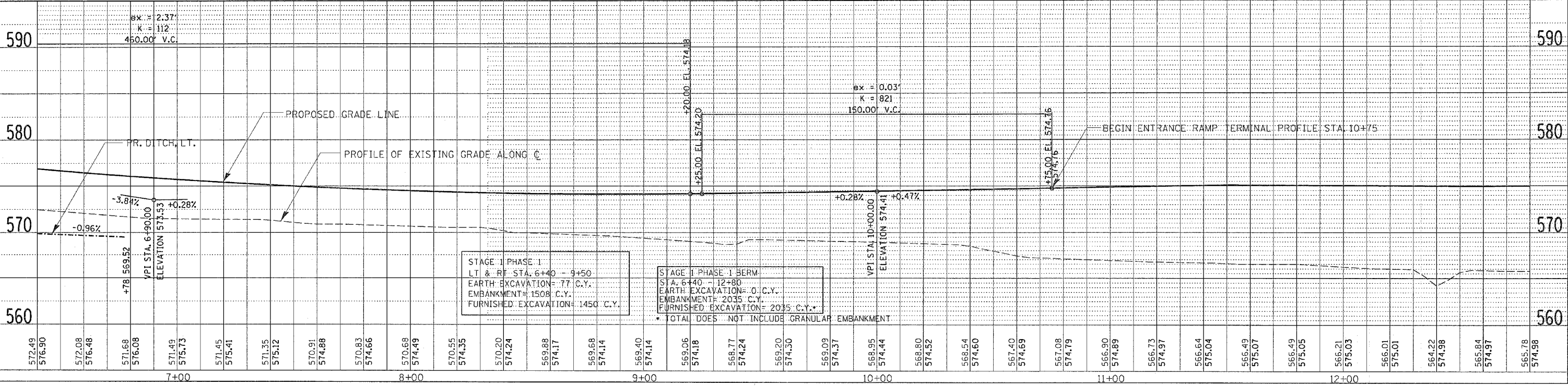


F.A.P. RTE.	SECTION	COUNTY	TOTAL SHEETS	SHEET NO.
595	1-3-K	ROCK ISLAND	476	121
STA. 6+40		TO STA. 12+80		
FED. ROAD DIST. NO.		ILLINOIS FED. AID PROJECT		



PLAN	REVIEWED	DATE
NOTE BOOK	ALIGNED	
NO.	CHECKED	
	FILE NAME	

PROFILE	REVIEWED	DATE
NOTE BOOK	GRADES CHECKED	
NO.	STRUCTURE	
	NOTATION	



52ND AVENUE RAMP 1 - STA. 6+40 TO STA. 12+80