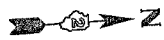
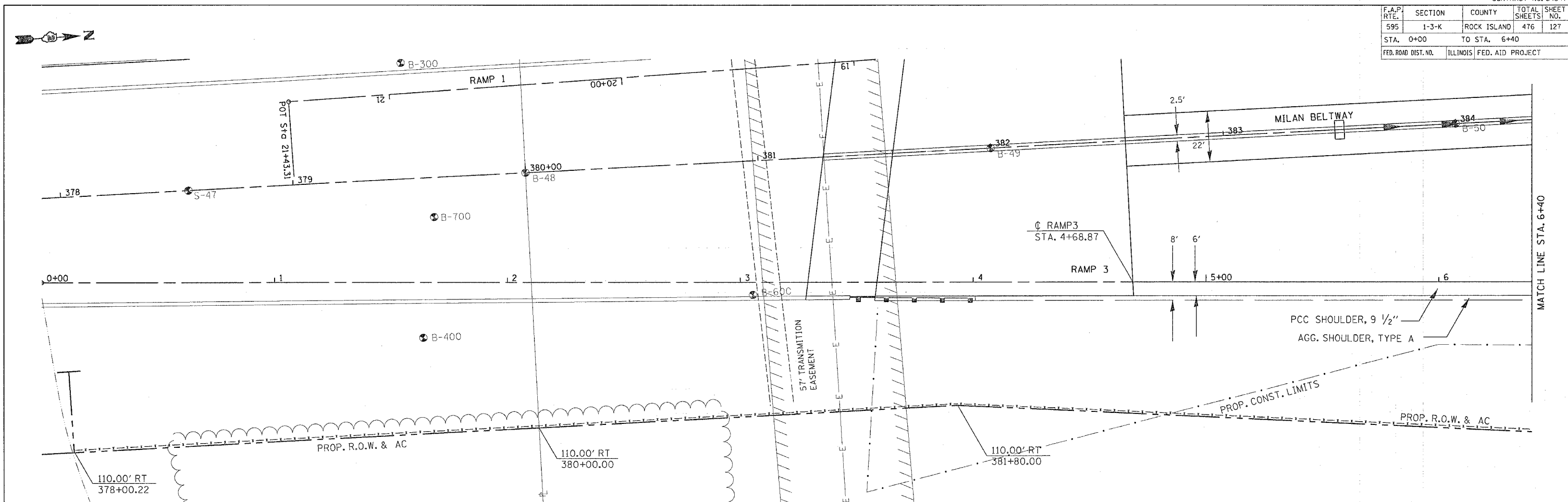


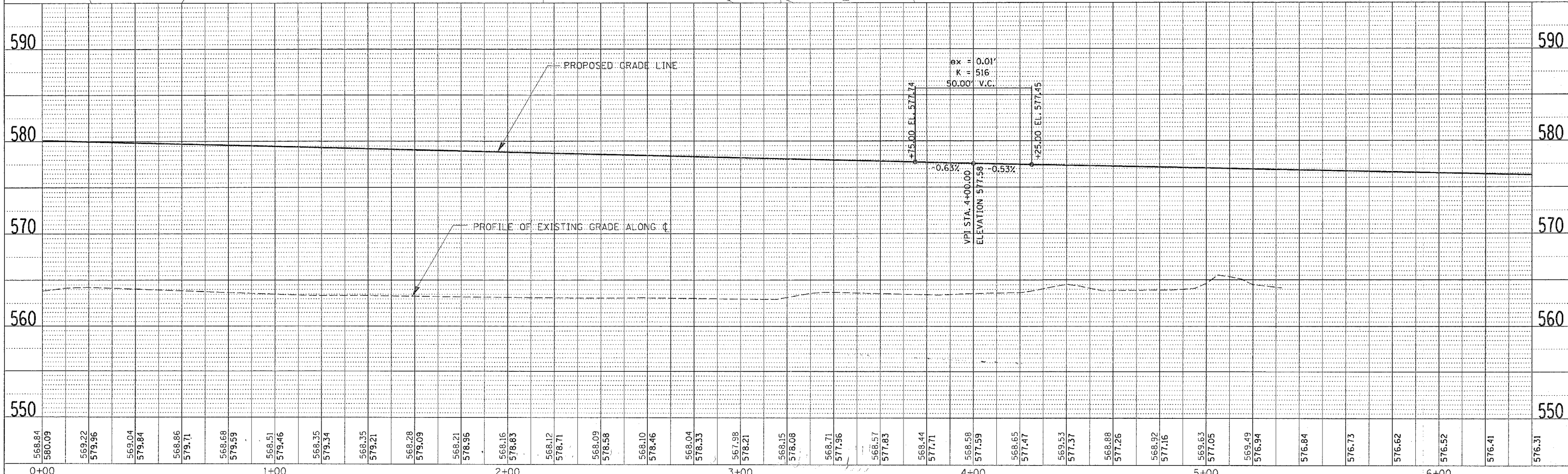
F.A.P. RTE.	SECTION	COUNTY	TOTAL SHEETS	SHEET NO.
595	1-3-K	ROCK ISLAND	476	127
STA. 0+00		TO STA. 6+40		
FED. ROAD DIST. NO.	ILLINOIS	FED. AID PROJECT		



PLAN	REVISIONS	DATE
NO.	NO.	
NO.	NO.	
NO.	NO.	
NO.	NO.	



PROFILE	REVISIONS	DATE
NO.	NO.	
NO.	NO.	
NO.	NO.	
NO.	NO.	



52ND AVENUE RAMP 3 - STA. 0+00 TO STA. 6+40