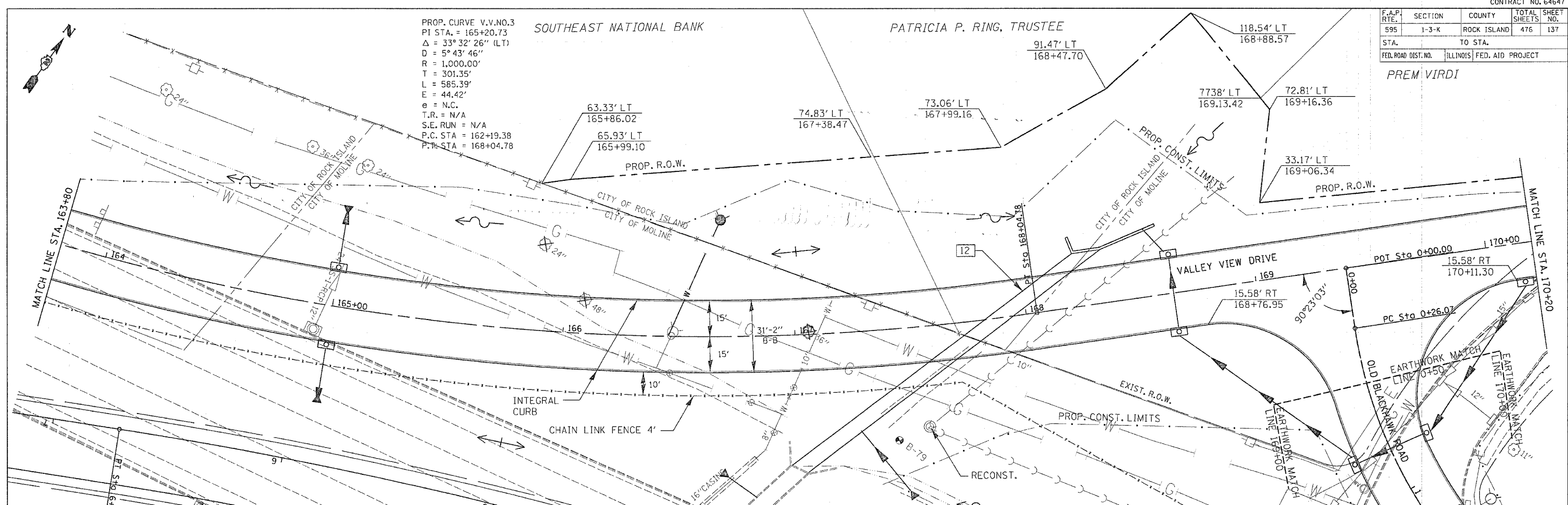


F.A.P. RTE.	SECTION	COUNTY	TOTAL SHEETS	SHEET NO.
595	1-3-K	ROCK ISLAND	476	137
STA.		TO STA.		
FED. ROAD DIST. NO.	ILLINOIS	FED. AID PROJECT		

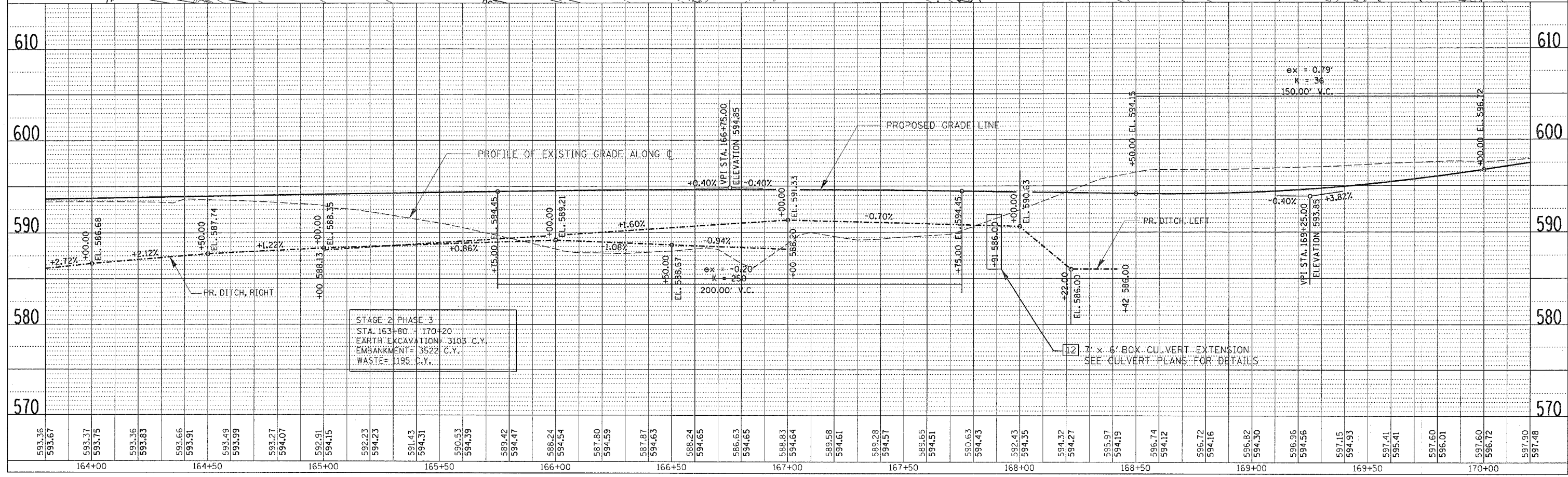
PREM VIRD I

PROP. CURVE V.V.NO.3
 PI STA. = 165+20.73
 $\Delta = 33^{\circ}32'26''$ (LT)
 $D = 5^{\circ}43'46''$
 $R = 1,000.00'$
 $T = 301.35'$
 $L = 585.39'$
 $E = 44.42'$
 $e = N.C.$
 $T.R. = N/A$
 $S.E. RUN = N/A$
 $P.C. STA. = 162+19.38$
 $P.T. STA. = 168+04.78$



DATE	BY	REVISION

DATE	BY	REVISION



STAGE 2 PHASE 3
 STA. 163+80 - 170+20
 EARTH EXCAVATION= 3103 C.Y.
 EMBANKMENT= 3522 C.Y.
 WASTE= 1195 C.Y.

VALLEY VIEW DRIVE - STA. 163+80 TO STA. 170+20