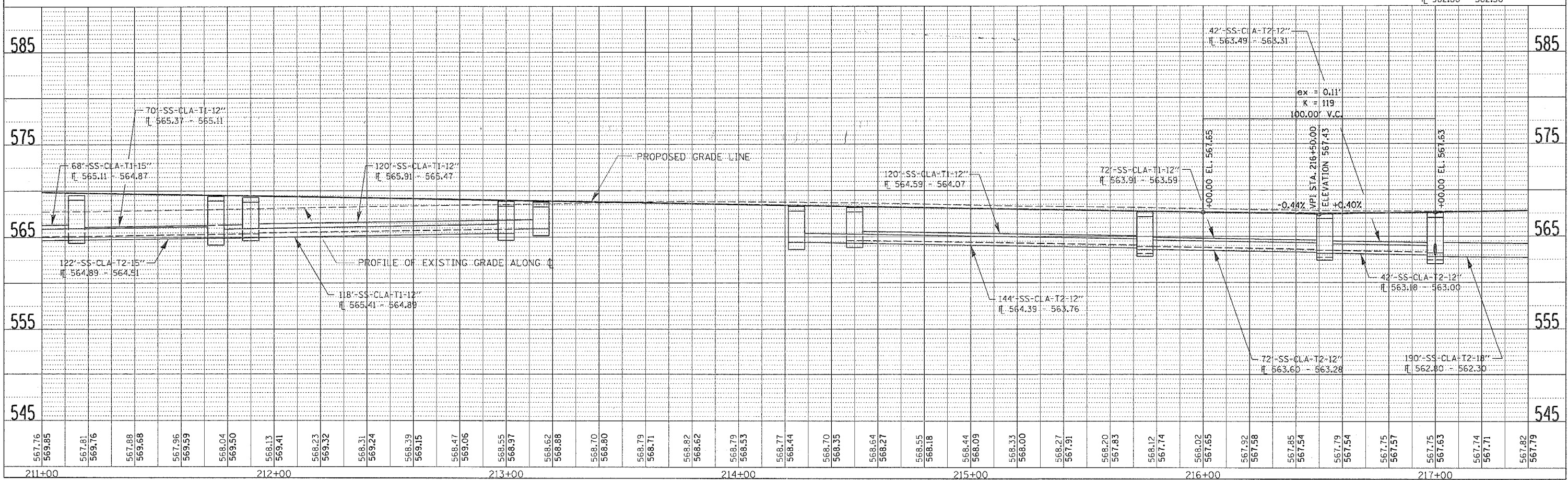
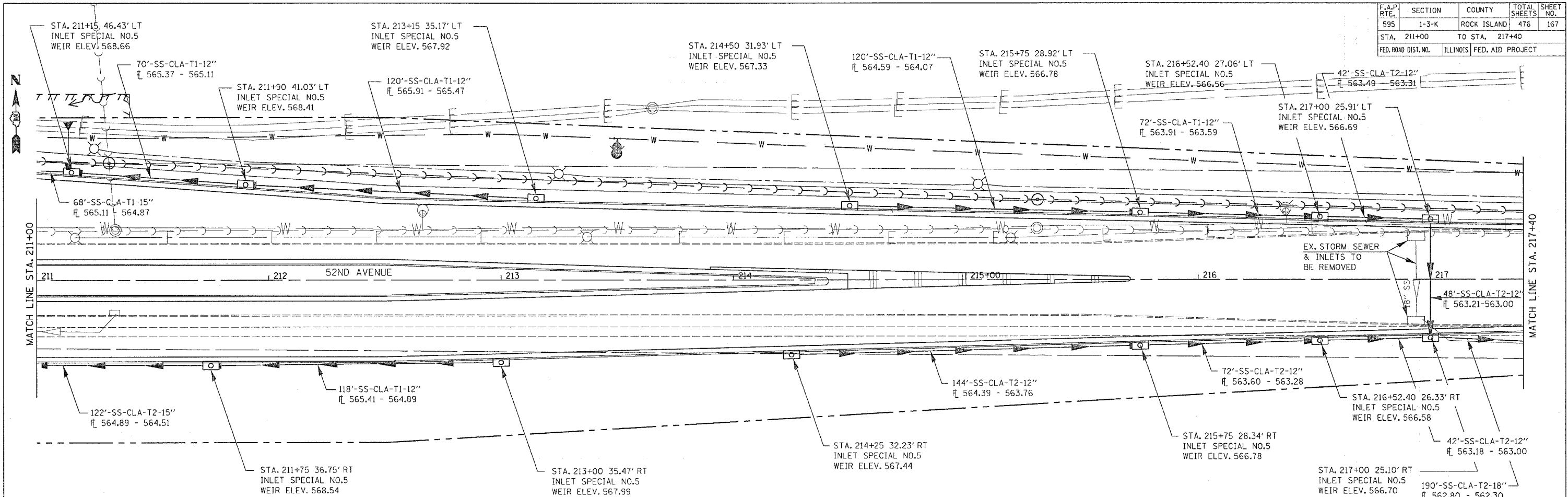


F.A.P. RTE.	SECTION	COUNTY	TOTAL SHEETS	SHEET NO.
595	1-3-K	ROCK ISLAND	476	167
STA. 211+00		TO STA. 217+40		
FED. ROAD DIST. NO.		ILLINOIS	FED. AID PROJECT	

PLAN	DATE	BY
SURVEYED		
PLotted		
Checked		
NOTE BOOK		
NO.		

PROFILE	DATE	BY
SURVEYED		
Plotted		
Checked		
NOTE BOOK		
NO.		



52ND AVENUE DRAINAGE DETAILS - STA. 211+00 TO STA. 217+40