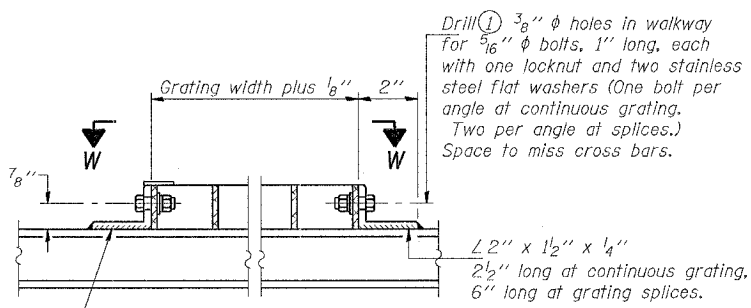
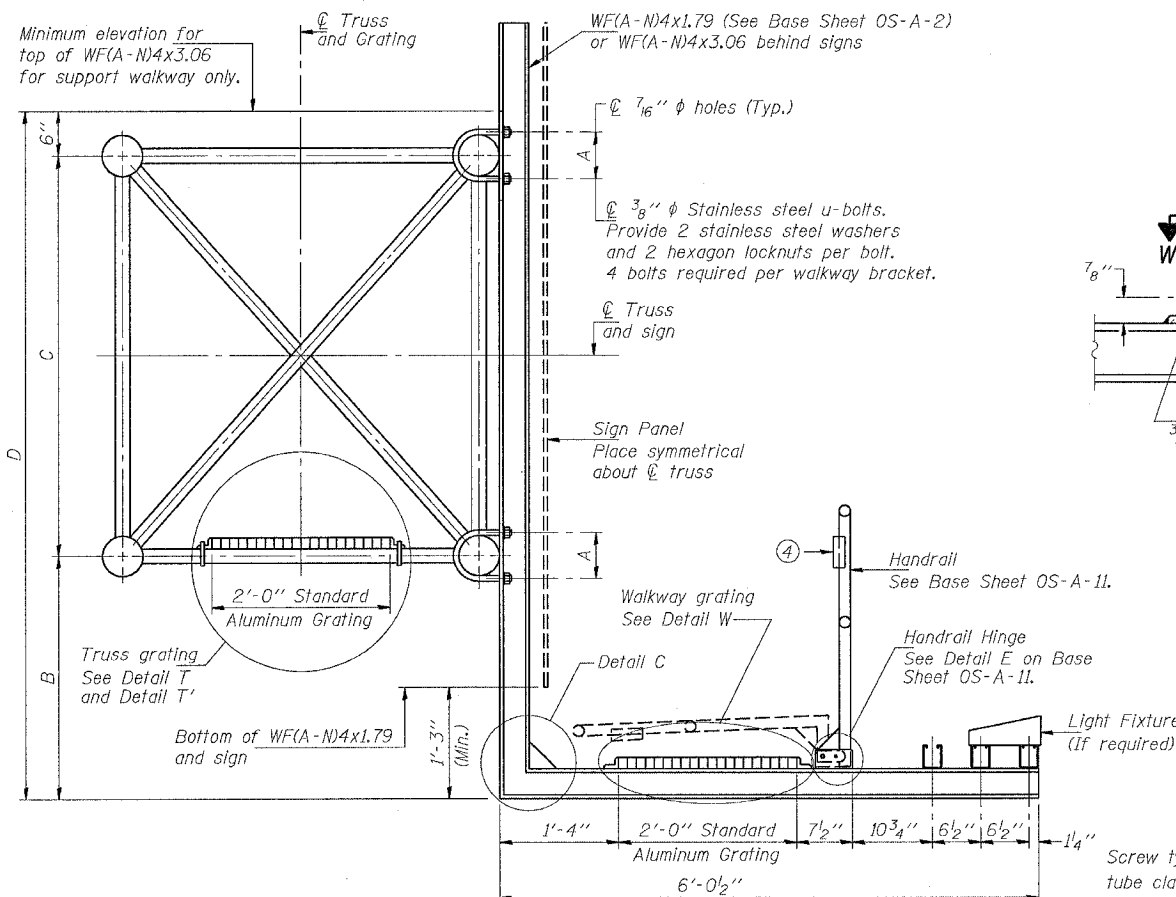
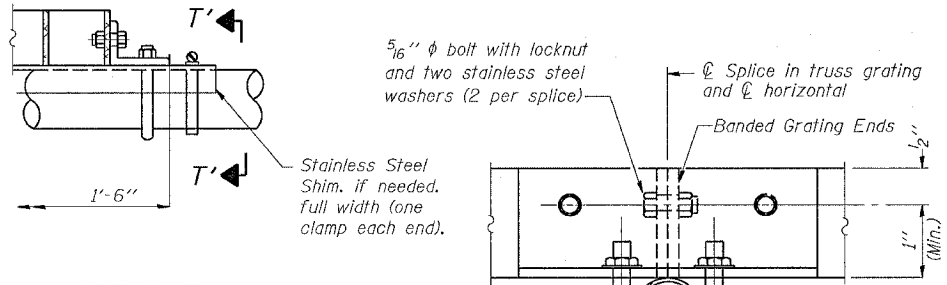


F.A.P. RTE.	SECTION	COUNTY	TOTAL SHEETS	SHEET NO.
595	1-3-K	ROCKISLAND	476	240B
STA.	TO STA.			
FED. ROAD DIST. NO.	ILLINOIS FED. AID PROJECT			



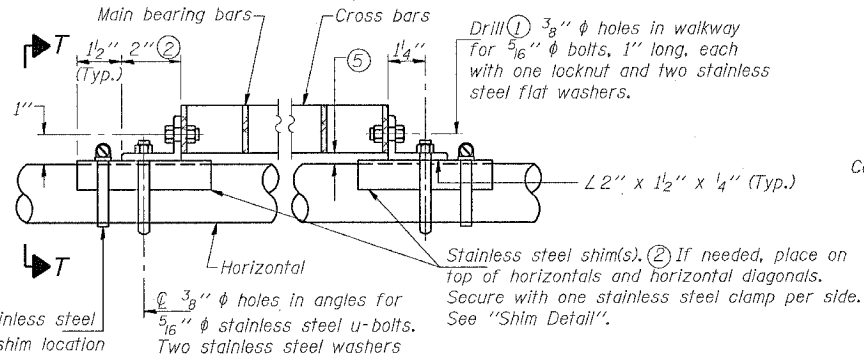
DETAIL W
(Walkway grating)



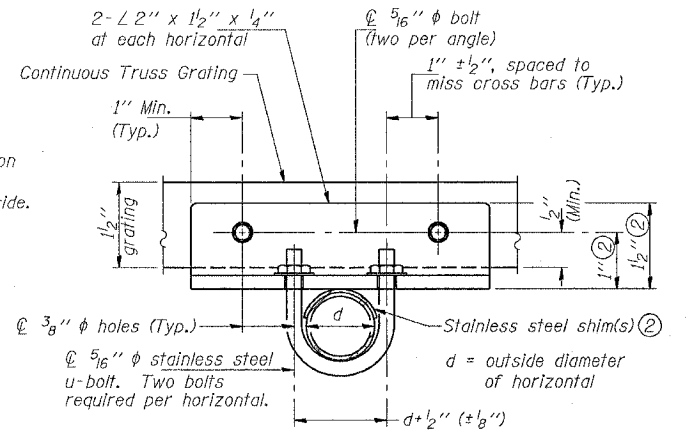
DETAIL T'

(Truss grating splice)
Details not shown same as Detail T. Alternate materials may be used subject to the Engineer's review and approval.

SECTION T'-T'



DETAIL T
(Continuous Truss grating)



SECTION T-T

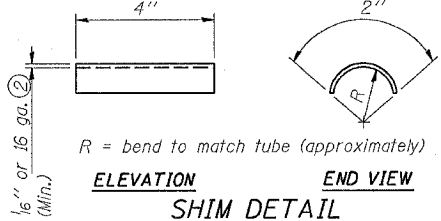
SPECIFICATIONS FOR STANDARD ALUMINUM GRATING

Main Bearing Bars shall be 3/16" x 1 1/2" on 1 3/16" centers and conform to ASTM B221 Alloy 6061-T6.
Cross bars shall be 3/16" x 1 1/2" on 4" centers and conform to ASTM B221 Alloy 6063-T5 or 6061-T6.

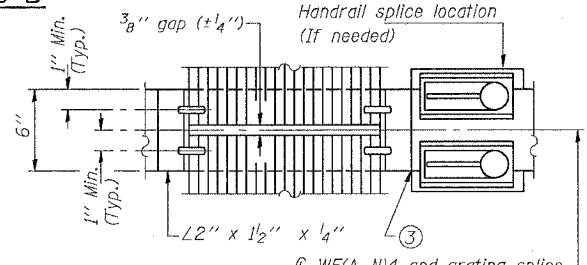
OR

Aluminum Grating with modified "I" sections for main bearing bars shall meet the following requirements:
Main bars shall conform to ASTM B221 Alloy 6061-T6 and have a minimum section modulus equal to 0.0705 in.³ per bar, a depth of 1 1/2", spaced on 1 3/16" centers.
Cross bars shall conform to ASTM B221 Alloy 6063-T5 or T-42 and spaced on 4" centers.

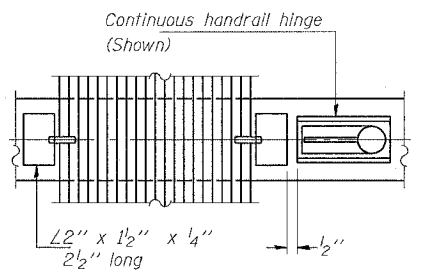
Structure Number	Station	A	B	C	D
2S08INMB35900	359+00	6' 3/8"	3' 4 1/2"	5' 3"	9' 1 1/2"
2S08INMB38150	381+50	7' 3/8"	2' 4 1/2"	5' 3"	8' 1 1/2"



SECTION B-B

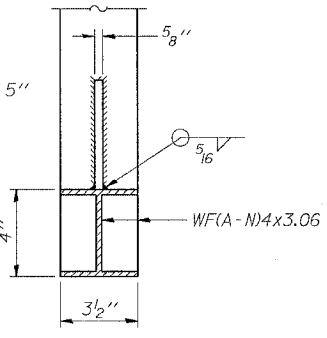


(AT WALKWAY GRATING SPLICE)

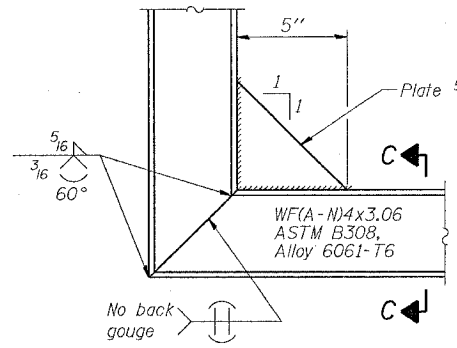


(CONTINUOUS WALKWAY GRATING)

SECTION W-W



SECTION C-C



DETAIL C

(See Detail P, Base Sheet OS-A-11.)

NUMBER	REVISION	DATE

OVERHEAD SIGN STRUCTURES ALUMINUM WALKWAY DETAILS

REVISIONS		ILLINOIS DEPARTMENT OF TRANSPORTATION
NAME	DATE	
		SCALE: VERT. HORIZ. DATE DRAWN BY CHECKED BY