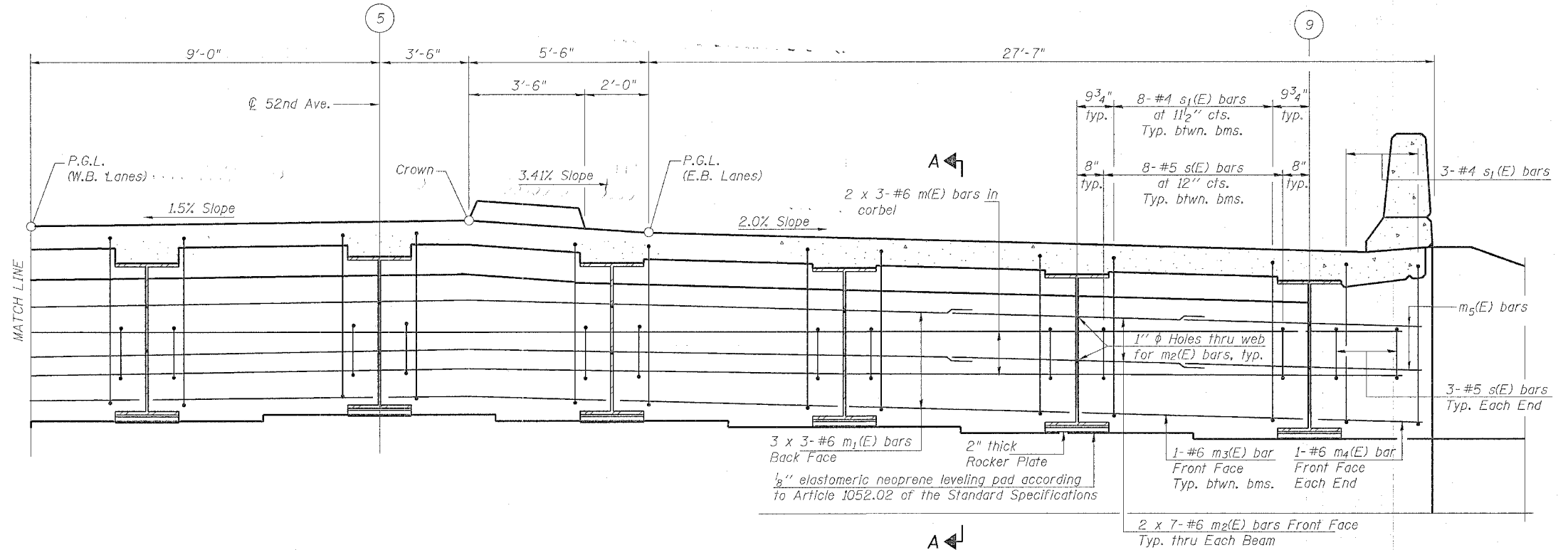


STATE OF ILLINOIS
DEPARTMENT OF TRANSPORTATION

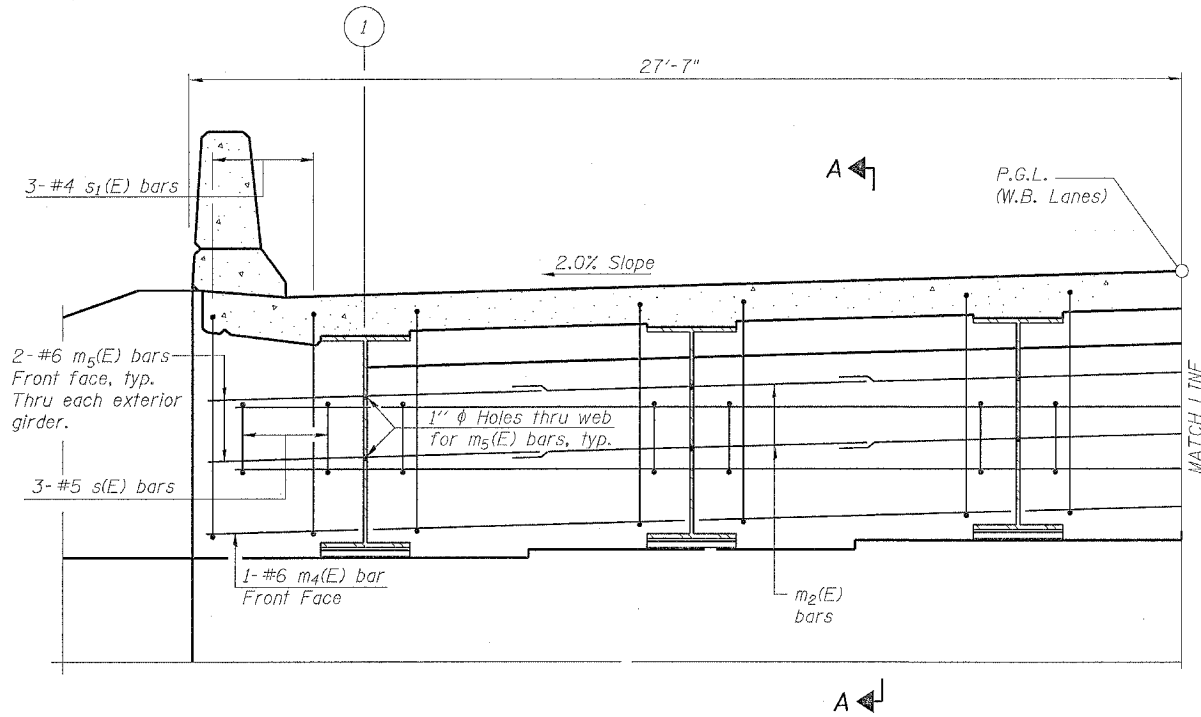
ROUTE NO.	SECTION	COUNTY	TOTAL SHEETS	SHEET NO.	SHEET NO.
F.A.P. 595	I-3-K	Rock Island	476	261	22 SHEETS
FED. ROAD DIST. NO. 7	ILLINOIS	FED. AID PROJECT			

Notes:
Reinforcement bars in diaphragm are billed with superstructure on sheet 8 of 22.
Concrete in diaphragm is included with Concrete Superstructure on sheet 8 of 22.
For details of bars s(E) & s₁(E) see this sheet.
For details of bar v(E) see sheet 8 of 22.
The s(E) and s₁(E) bars shall be placed parallel to the beams. Spacing for these bars shall be at right angles to the beams.
For anchor bolt details see sheet 14 of 22.

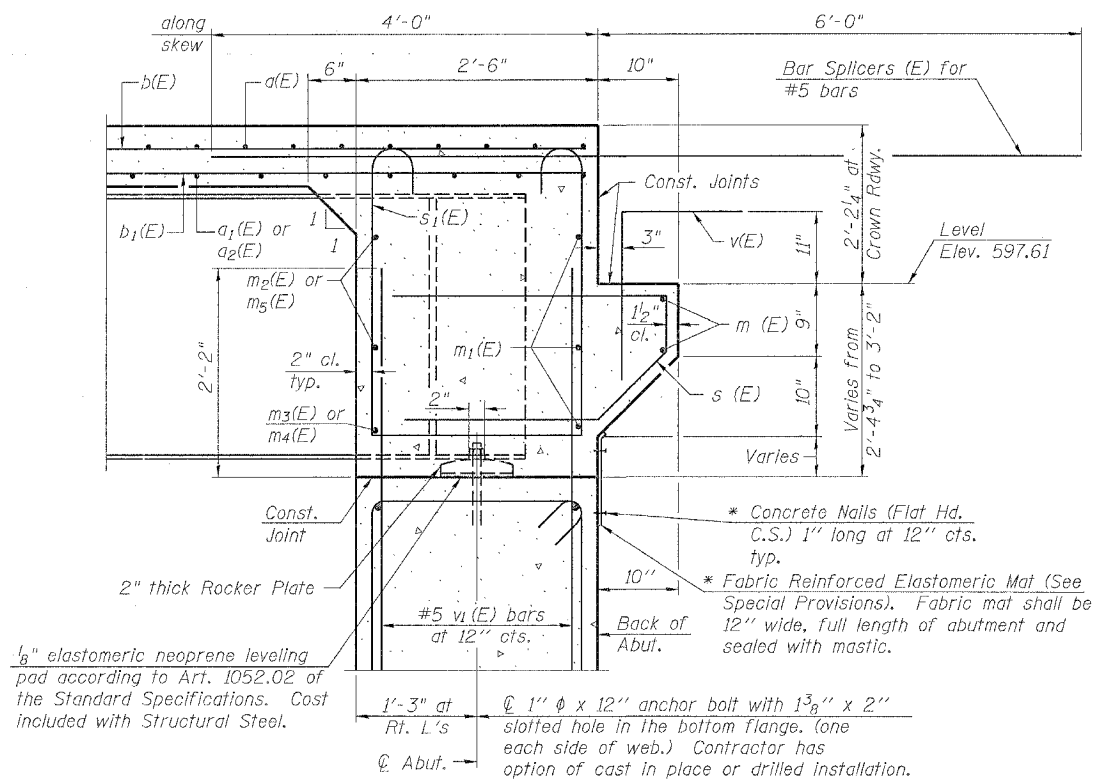
MIN. BAR LAP
#6 bar = 2'-9"



PARTIAL DIAPHRAGM ELEVATION AT ABUTMENT
(Looking East)
(Dimensions are @ Rt. L's @ 52nd Ave.)



PARTIAL DIAPHRAGM ELEVATION AT ABUTMENT
(Looking East)
(Dimensions are @ Rt. L's @ 52nd Ave.)



SECTION A-A
Dimensions at right angles to abutment, except as shown.
* Cost included with Concrete Superstructure.

DIAPHRAGM DETAILS AT EAST ABUTMENT
52nd AVE. OVER MILAN BELTWAY
FAU ROUTE 5822 SECTION I-3
ROCK ISLAND COUNTY
STATION 1159+12.92
STRUCTURE NO. 081-0156

DESIGNED	JBF
CHECKED	JBF
DRAWN	RAP
CHECKED	JBF

SI-DSI 9-01-03