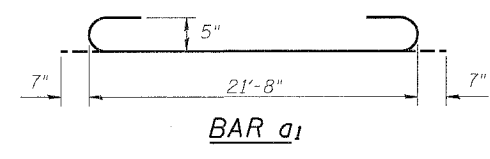
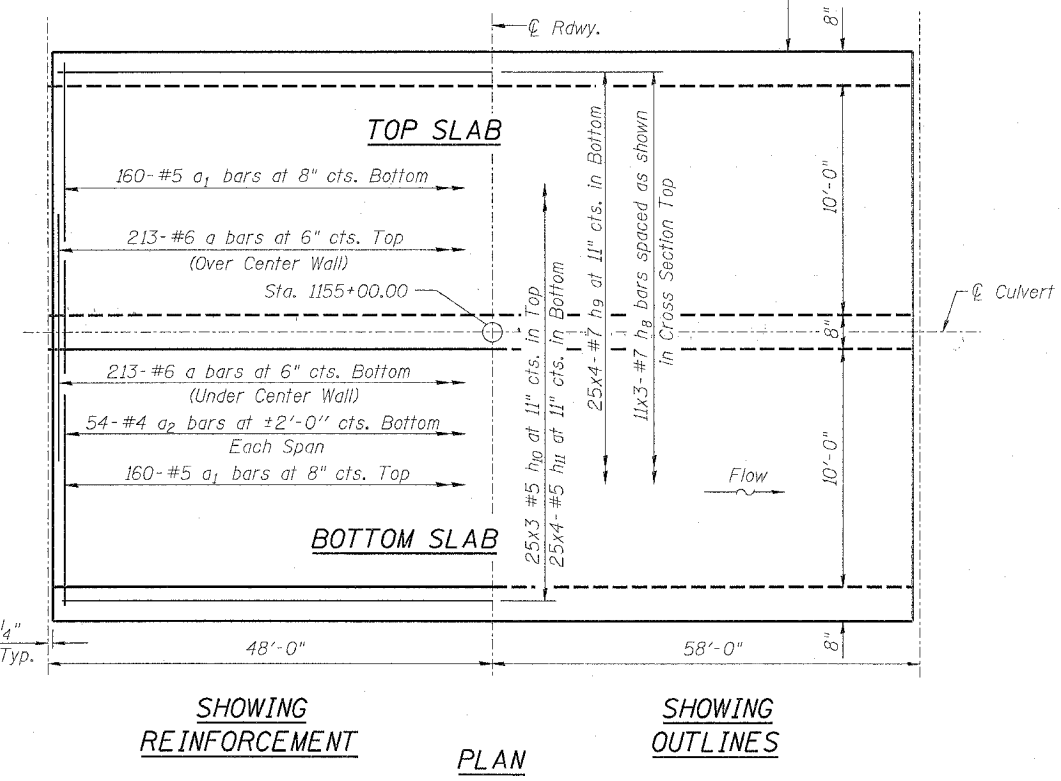
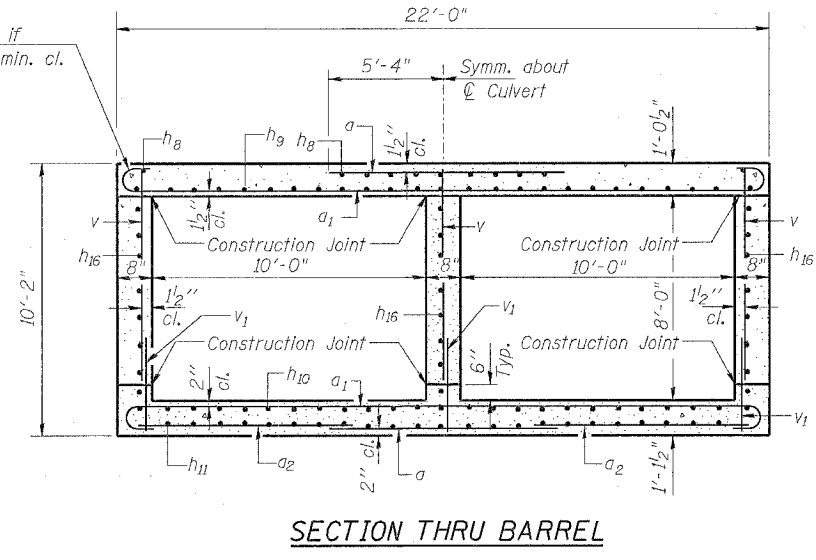
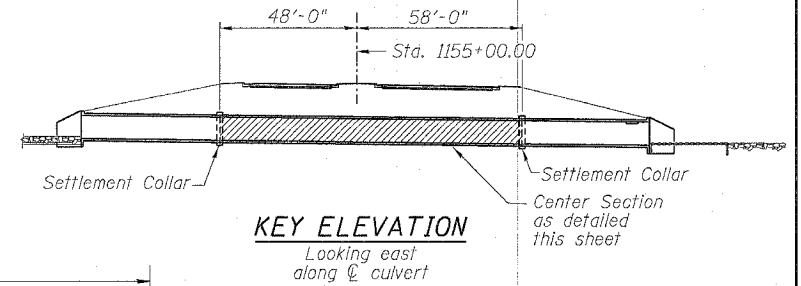
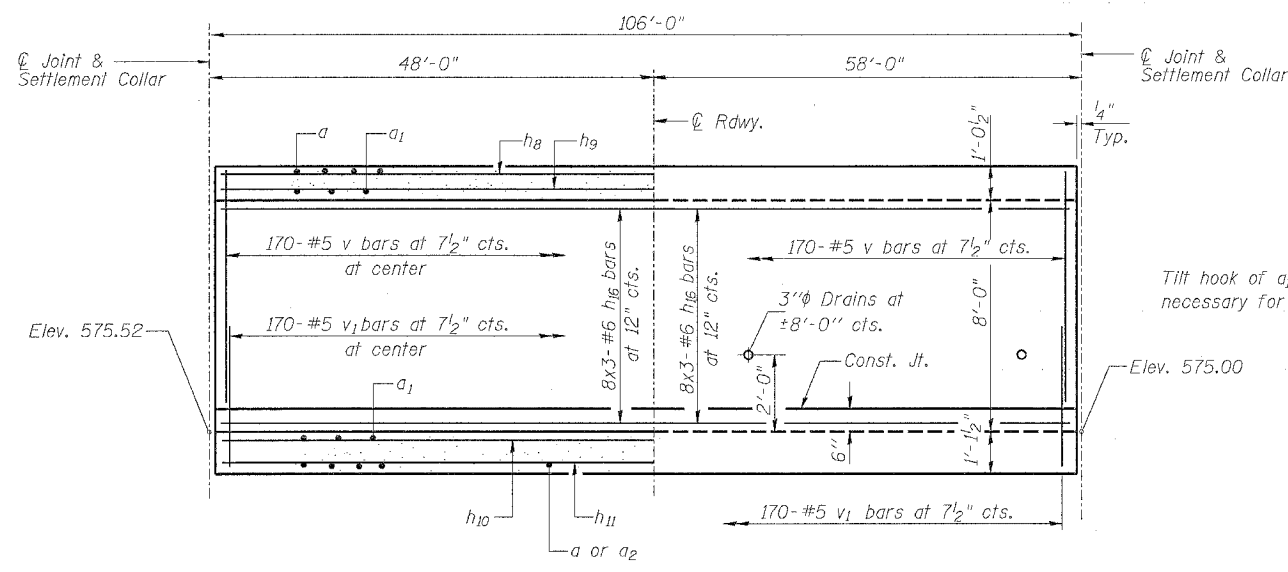


STATE OF ILLINOIS
DEPARTMENT OF TRANSPORTATION

ROUTE NO.	SECTION	COUNTY	TOTAL SHEETS	SHEET NO.	SHEET NO. 3 7 SHEETS
F.A.P. 595	1-3-K	Rock Island	476	276	
FED. ROAD DIST. NO. 7	ILLINOIS	FED. AID PROJECT NO.			



Lap Length
#5 Bar 1'-8"
#6 Bar 2'-0"
#7 Bar 2'-9"

BILL OF MATERIAL CENTER SECTION

Bar	No.	Size	Length	Shape
a	426	#6	10'-8"	—
a1	320	#5	22'-10"	⌢
a2	108	#4	6'-10"	—
h8	33	#7	37'-0"	—
h9	100	#7	28'-6"	—
h10	75	#5	36'-4"	—
h11	100	#5	27'-8"	—
h16	72	#6	36'-6"	—
v	510	#5	8'-2"	—
v1	510	#5	3'-4"	—
Concrete Box Culverts			Cu. Yd.	250.2
Reinforcement Bars			Pound	39,060

CULVERT DETAILS AND SECTION

52ND AVENUE EXTENSION
OVER AN UNNAMED STREAM
FAU ROUTE 5822 SECTION 1-3
ROCK ISLAND COUNTY
STATION 1155+00
STRUCTURE NO. 081-2035

DESIGNED	JDC
CHECKED	BDF
DRAWN	RAP
CHECKED	BDF

DB-H-0 10-31-02