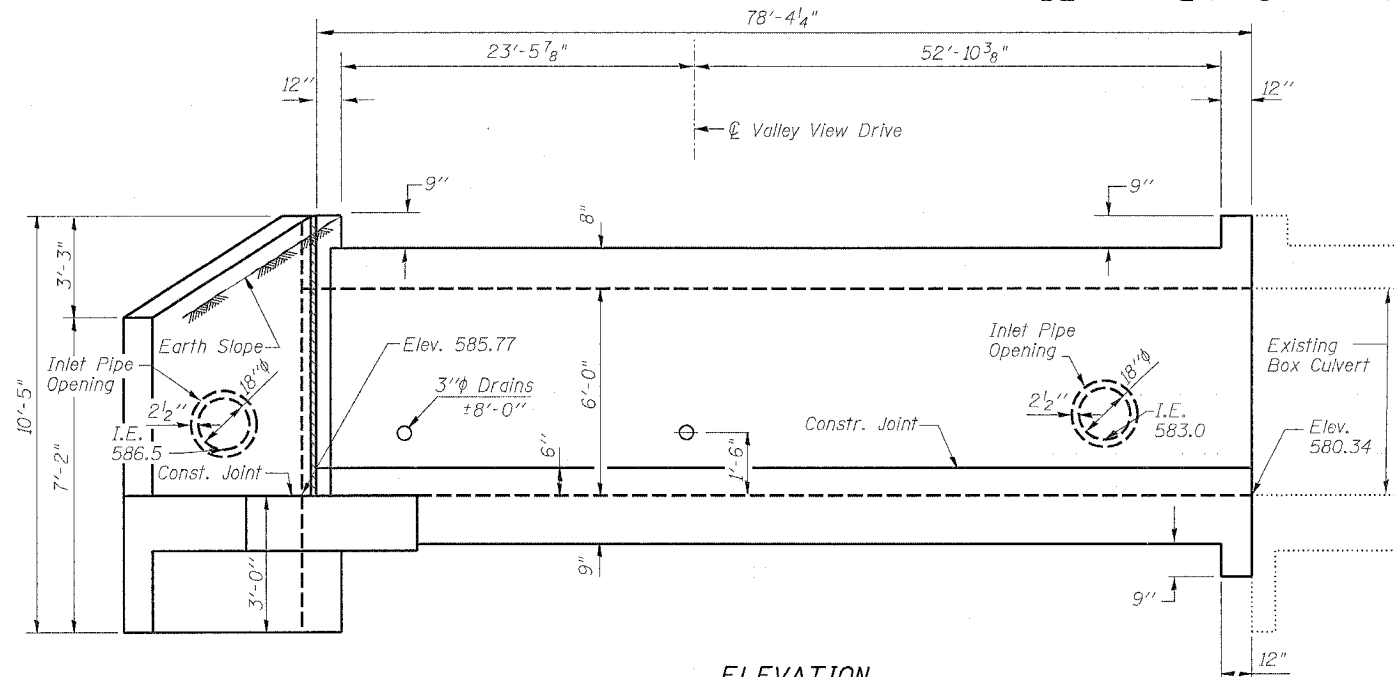


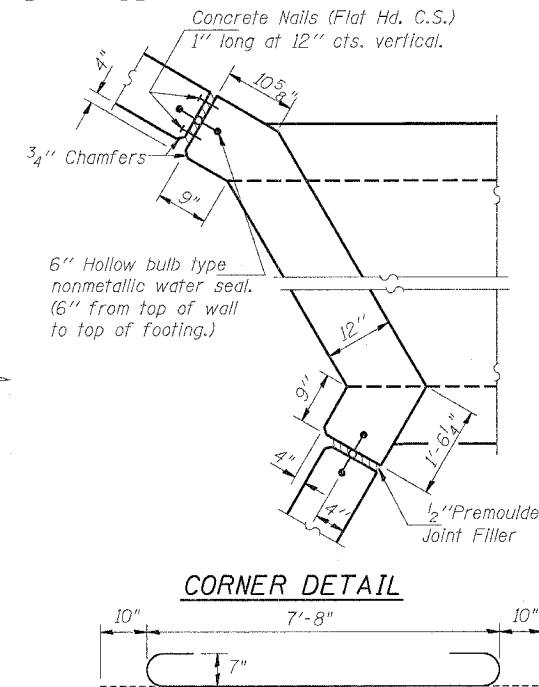
STATE OF ILLINOIS
DEPARTMENT OF TRANSPORTATION

ROUTE NO.	SECTION	COUNTY	TOTAL SHEETS	SHEET NO.
F.A.P. 595	I-3-K	Rock Island	476	282
SHEET NO. 2 5 SHEETS				

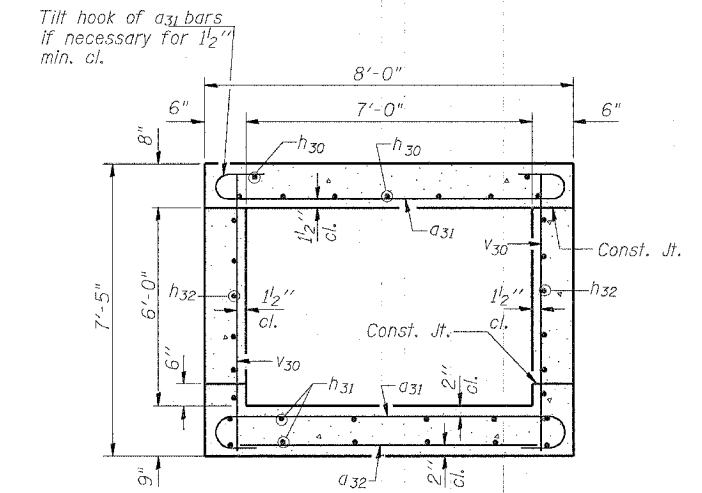


ELEVATION

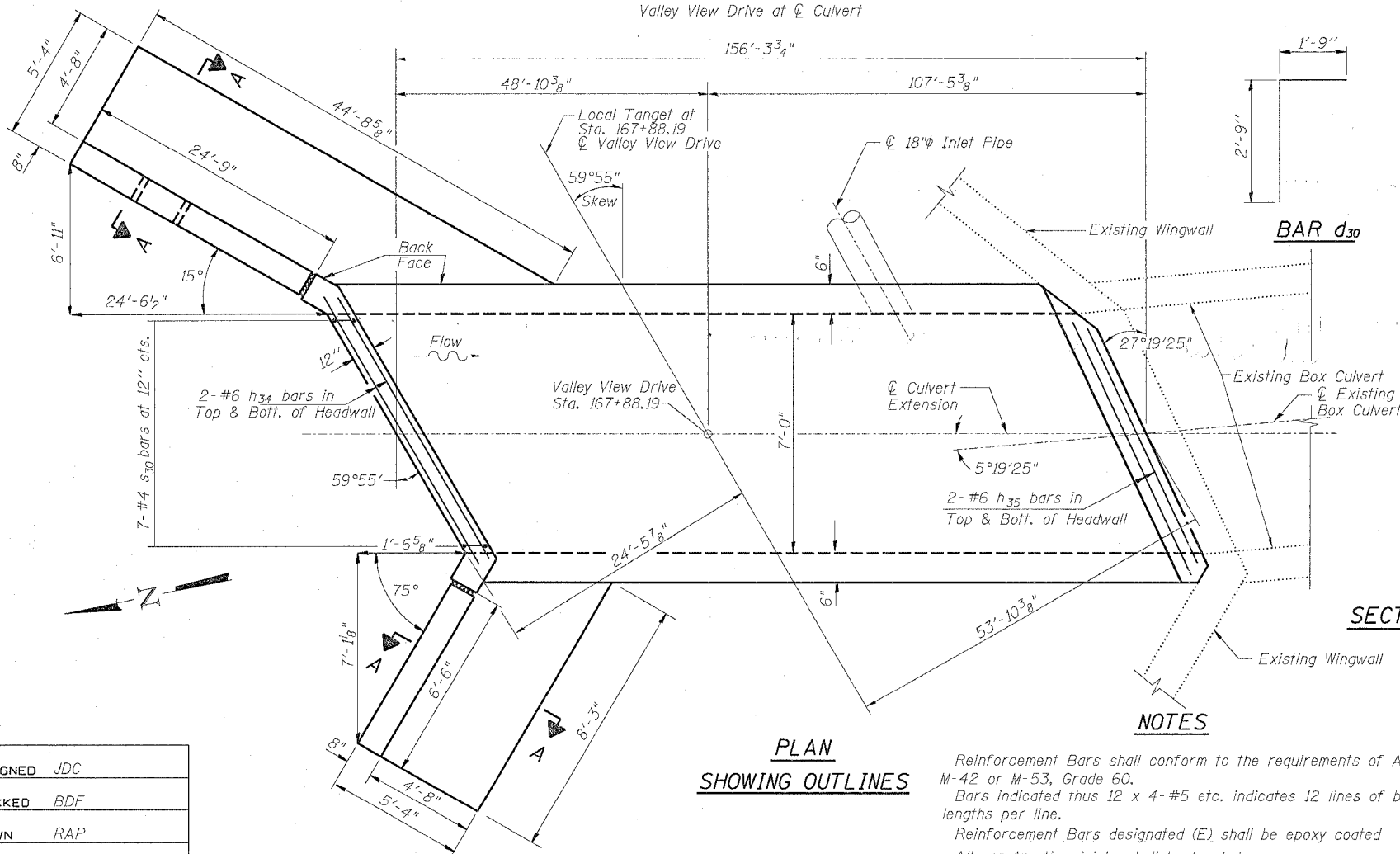
Dimensions at Rt. L's to Target to Valley View Drive at ϕ Culvert



CORNER DETAIL



SECTION THRU BARREL



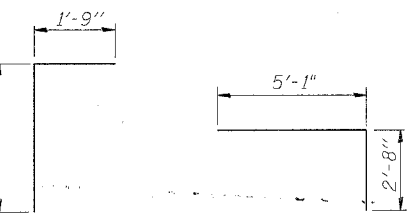
PLAN SHOWING OUTLINES

NOTES

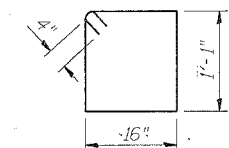
Reinforcement Bars shall conform to the requirements of AASHTO M-31, M-42 or M-53, Grade 60.
Bars indicated thus 12 x 4-#5 etc. indicates 12 lines of bars with 4 lengths per line.
Reinforcement Bars designated (E) shall be epoxy coated.
All construction joints shall be bonded.
Precast Culvert alternate is not allowed.

DESIGNED	JDC
CHECKED	BDF
DRAWN	RAP
CHECKED	BDF

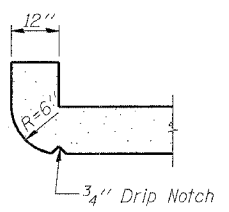
BAR a31



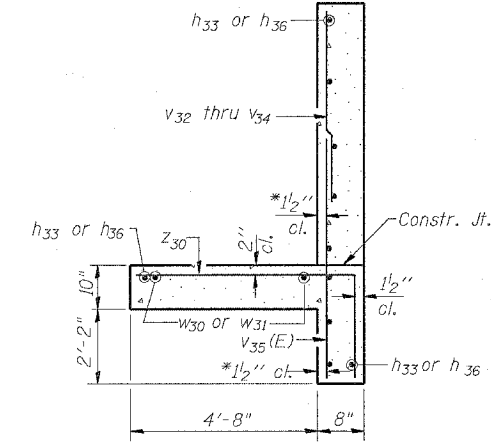
BAR Z30



BAR S30



SECTION THRU HEADWALL
(Up Stream End Only)



SECTION A-A

*v bars shall not be placed more than 1/2" cl. from back face of wingwall.

DESIGN STRESSES

$f_y = 60,000$ psi
 $f'_c = 3,500$ psi
Max. Soil Pressure under footing = 2800 psf

LOADING HS 20-44 & ALT.

BILL OF MATERIAL

Bar	No.	Size	Length	Shape
a31	590	#7	9'-4"	U
a32	81	#4	7'-3"	U
d30	7	#4	4'-6"	J
h30	45	#6	33'-10"	—
h31	60	#5	33'-6"	—
h32	60	#5	33'-6"	—
h33	11	#4	24'-4"	—
h34	6	#6	15'-3"	—
h35	8	#6	8'-8"	—
h36	11	#4	6'-1"	—
s30	7	#4	5'-6"	□
v30	419	#4	7'-0"	—
v31	4	#4	10'-0"	—
v32	15	#4	3'-11"	—
v33	14	#4	5'-6"	—
v34	11	#4	6'-3"	—
v35 (E)	40	#4	6'-0"	—
v36	16	#4	4'-0"	—
w30	7	#5	30'-9"	—
w31	7	#5	9'-9"	—
z30	51	#6	7'-9"	—
Concrete Box Culverts		Cu. Yd.	115.5	
Reinforcement Bars, Epoxy Coated		Pound	160	
Reinforcement Bars		Pound	21,690	
Expansion Bolts 3/4" ϕ		Each	16	

UPSTREAM EXTENSION DETAILS
FA ROUTE 595 SECTION I-3-K
ROCK ISLAND COUNTY
STATION 410+21.25 (JOHN DEERE ROAD)
STATION 167+88.19 (VALLEY VIEW DRIVE)