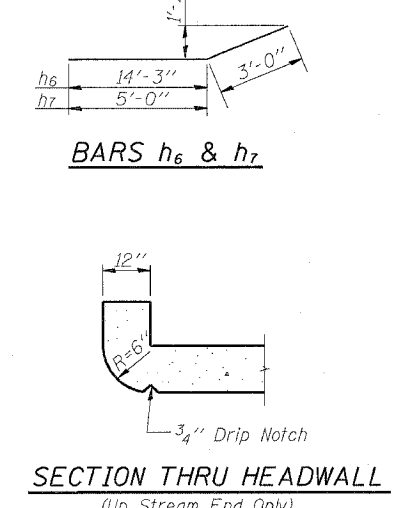
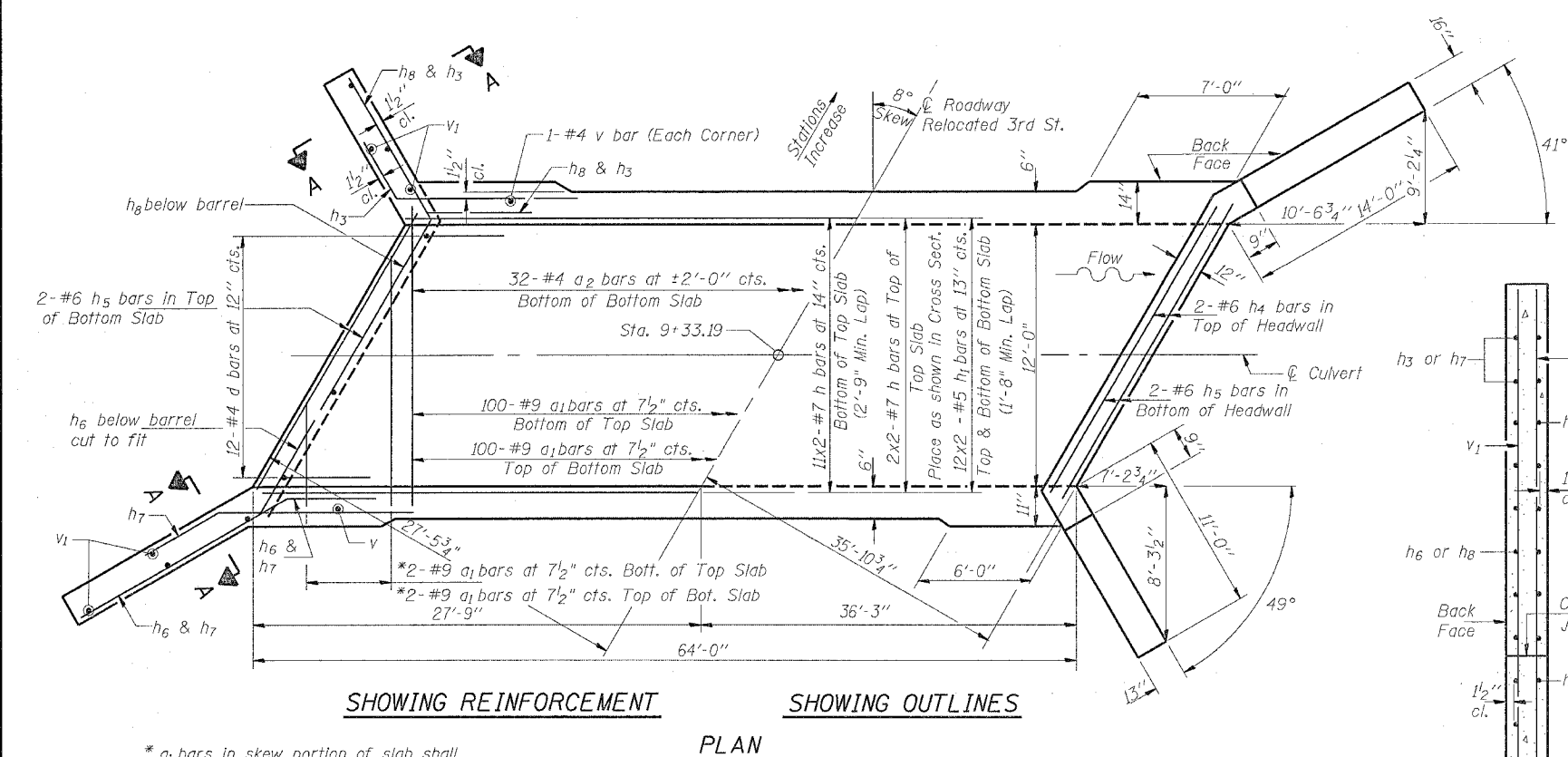
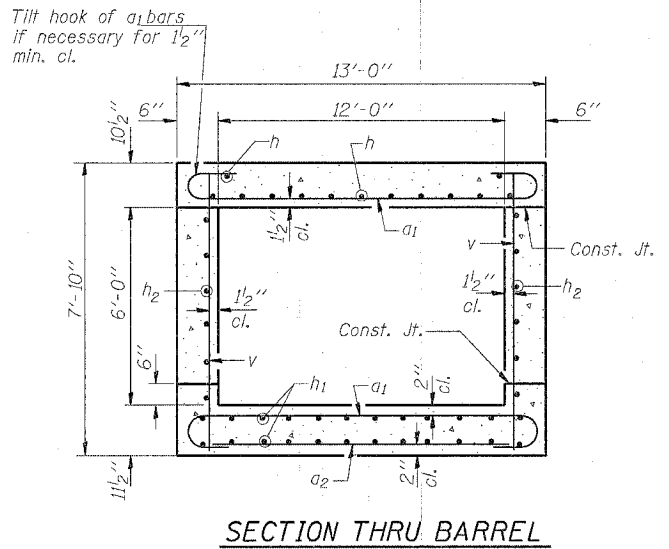
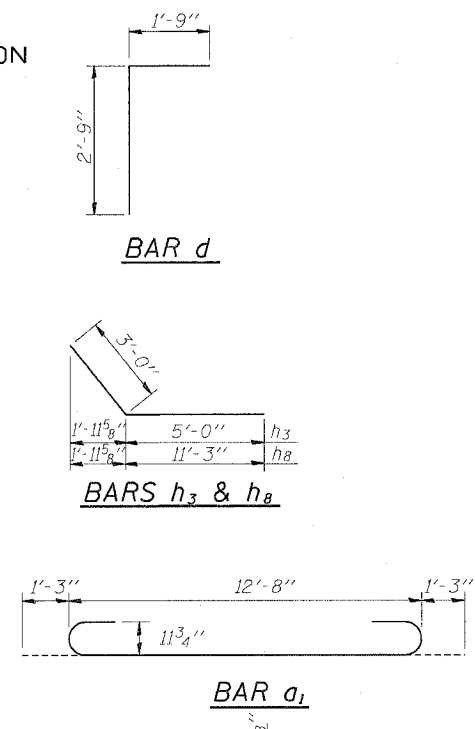
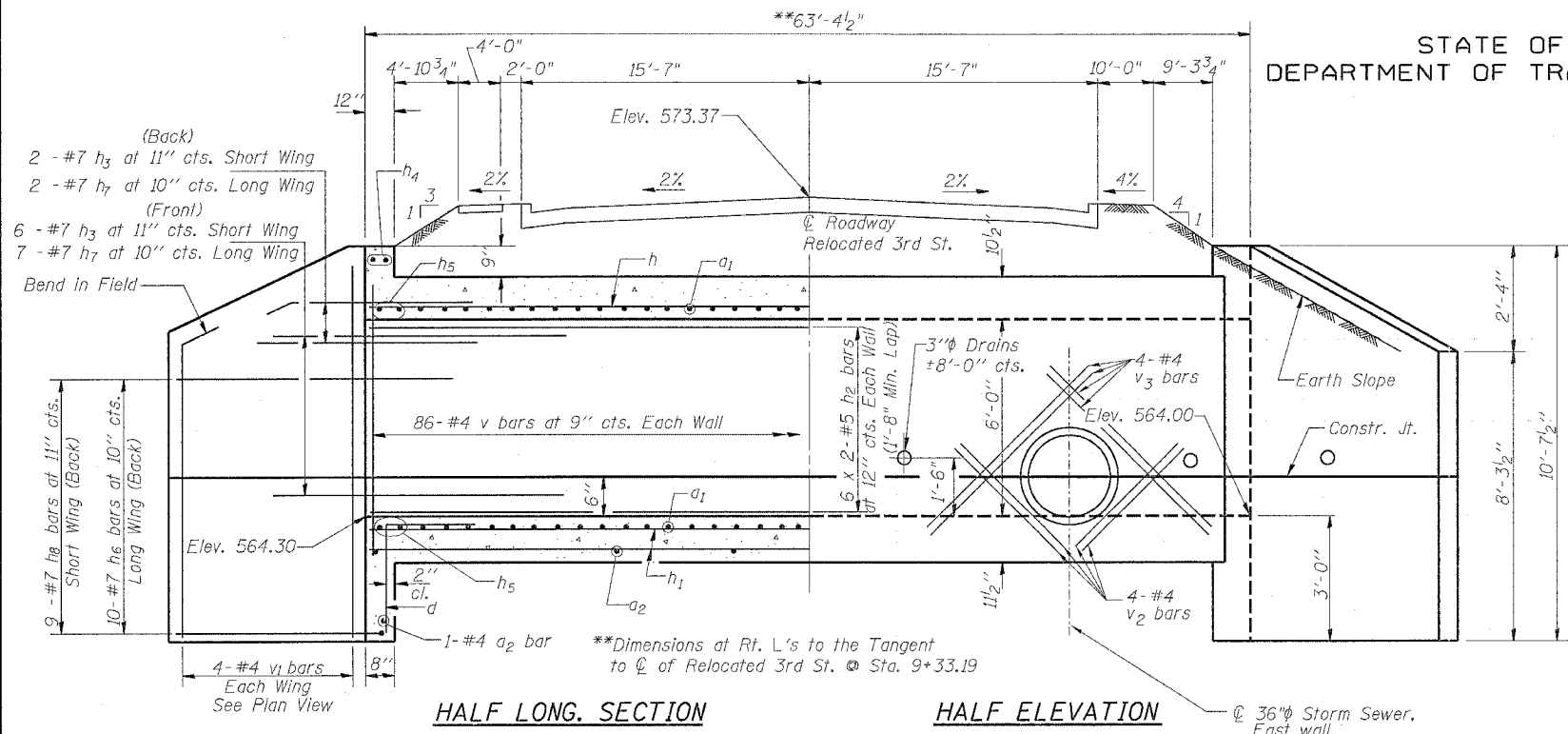


STATE OF ILLINOIS
DEPARTMENT OF TRANSPORTATION

ROUTE NO.	SECTION	COUNTY	SP. DIST.	SHEET NO.	SHEET NO. 1
F.A.P. 595	1-3-K	Rock Island	476	287	1 SHEETS
FED. ROAD DIST. NO. 7	ILLINOIS	FED. AID PROJECT-			



BILL OF MATERIAL

Bar	No.	Size	Length	Shape
a1	204	#9	15'-2"	U
a2	34	#4	12'-6"	—
d	24	#4	4'-6"	L
h	26	#7	33'-6"	—
h1	48	#5	33'-0"	—
h2	24	#5	33'-0"	—
h3	16	#7	8'-0"	—
h4	4	#6	13'-0"	—
h5	8	#6	13'-0"	—
h6	20	#7	17'-3"	—
h7	18	#7	8'-0"	—
h8	18	#7	14'-3"	—
v	176	#4	7'-6"	—
v1	16	#4	10'-3"	—
v2	4	#4	4'-0"	—
v3	4	#4	7'-6"	—
Concrete Box Culverts			Cu. Yd.	100.8
Reinforcement Bars			Pound	18,180

NOTES

A distance of half the length of the wingwall but not less than six feet of the barrel shall be poured monolithically with the wingwalls.
Reinforcement Bars shall conform to the requirements of AASHTO M-31, M-42 or M-53, Grade 60.
Bars indicated thus 12 x 4-#5 etc. indicates 12 lines of bars with 4 lengths per line.
All construction joints shall be bonded.
Precast culvert alternate is not allowed.

DESIGN STRESSES

fy = 60,000 psi
f'c = 3,500 psi

LOADING HS 20-44 & ALT.

12'-0"x6'-0" R.C. BOX CULVERT
RELOCATED 3RD STREET
FA ROUTE 595 SECTION 1-3-K
ROCK ISLAND COUNTY
STATION 9+33.19

WATERWAY INFORMATION

Drainage Area = 183 Acres		Low Grade Elev. 571.50 @ Sta. 1172+00		Flood		Q		Opening Sq. Ft.		Nat. Head - Ft.		Headwater El.	
Freq. Yr.	C.F.S.	Exist.	Prop.	H.W.E.	Exist.	Prop.	Exist.	Prop.	Exist.	Prop.	Exist.	Prop.	Exist.
10	197	-	41.5	565.93	-	1.83	-	567.76	-	-	-	-	-
Design	50	282	-	52.3	566.24	-	2.42	-	568.66	-	-	-	-
Base	100	314	-	56.2	566.55	-	2.61	-	568.98	-	-	-	-
Overtopping	-	-	-	-	-	-	-	-	-	-	-	-	-
Max. Calc.	500	N/A	-	-	-	-	-	-	-	-	-	-	-

DESIGNED	-	BDF
CHECKED	-	BDF
DRAWN	-	CLH
CHECKED	-	BDF

SSB-H-R 6-1-2000

Overtopping Occurs at the 50-year Storm