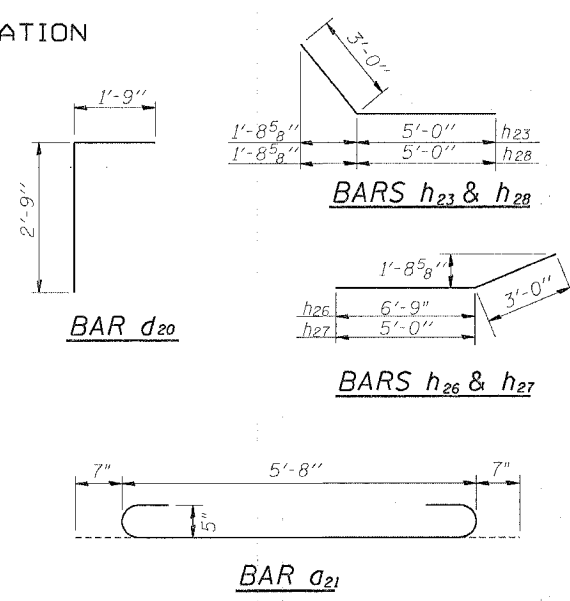
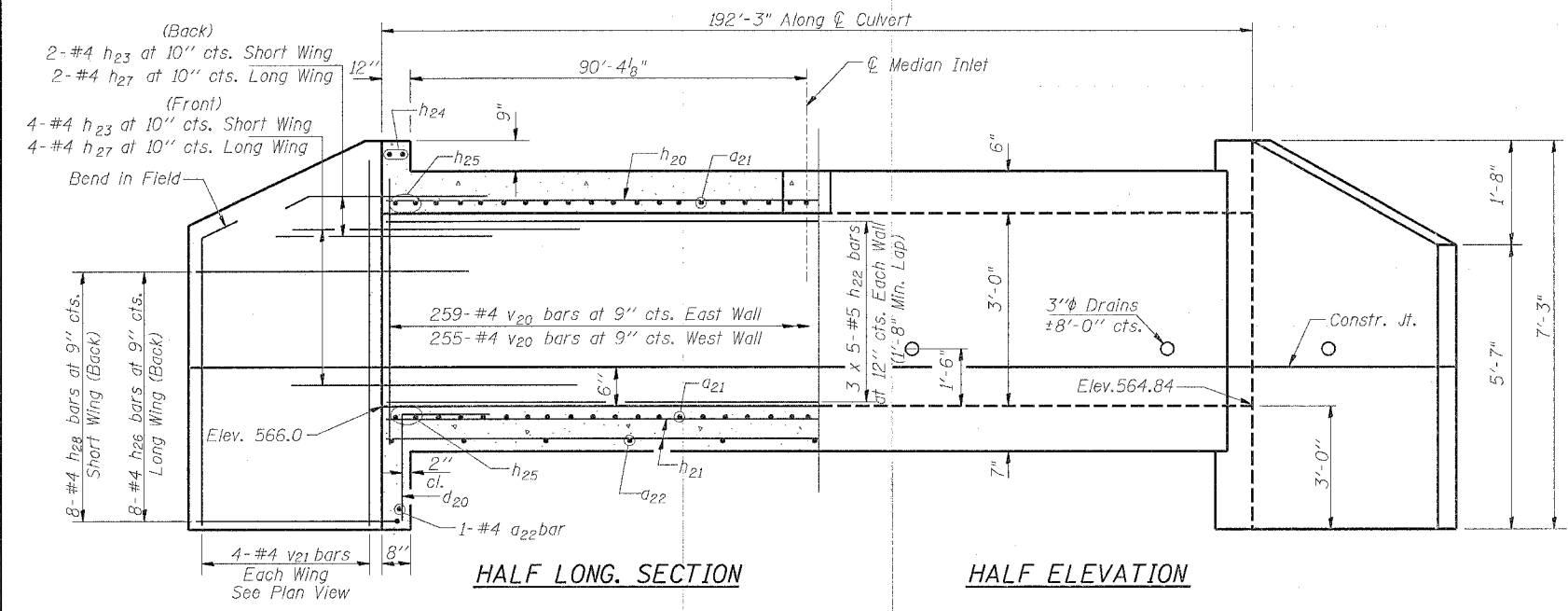
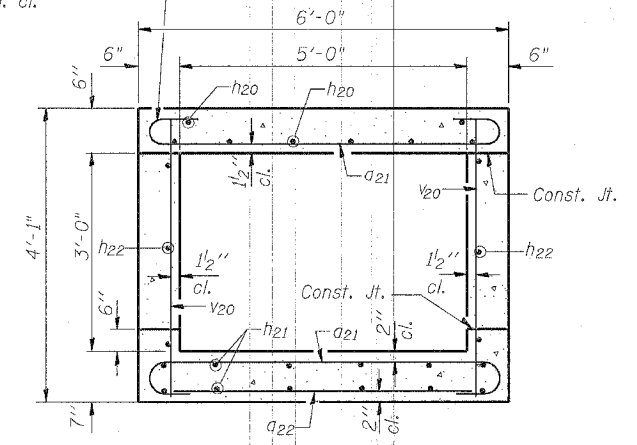


STATE OF ILLINOIS
DEPARTMENT OF TRANSPORTATION

ROUTE NO.	SECTION	COUNTY	DATE	SHEET	SHEET NO. 2
F.A.P. 595	1-3-K	Rock Island	476	289	2 SHEETS
FED. ROAD DIST. NO. 7	LENGTH	FED. AID PROJECT			



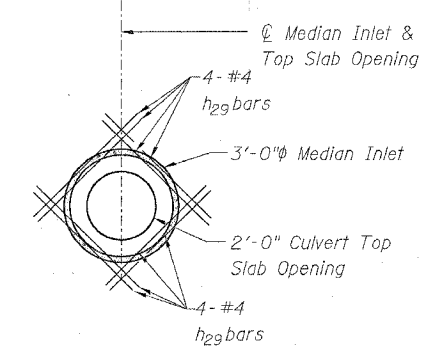
Tilt hook of a21 bars if necessary for 1/2" min. cl.



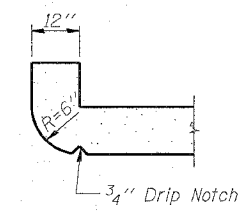
SECTION THRU BARREL

BILL OF MATERIAL

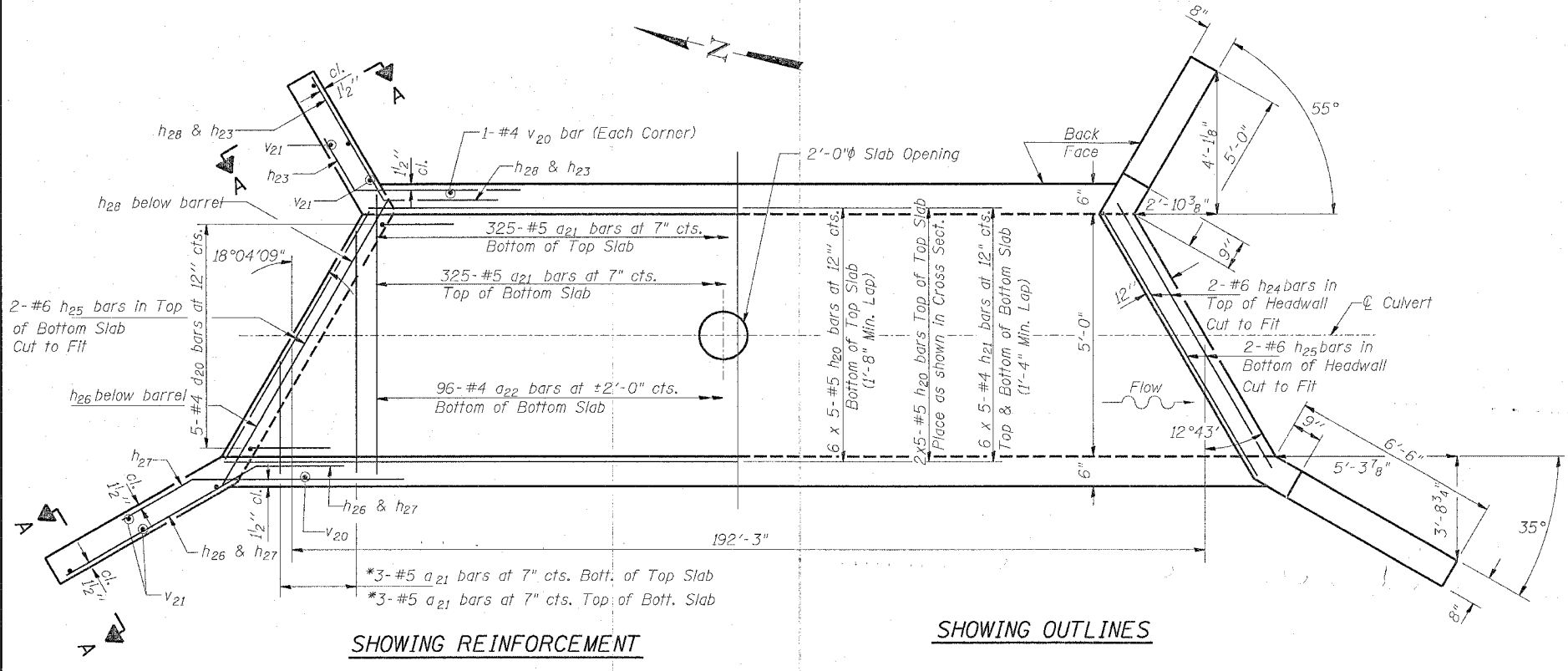
Bar	No.	Size	Length	Shape
a21	656	#5	6'-10"	U
a22	98	#4	5'-3"	—
d20	10	#4	4'-6"	—
h20	40	#5	40'-0"	—
h21	60	#4	39'-9"	—
h22	30	#5	40'-0"	—
h23	12	#4	8'-0"	—
h24	4	#6	5'-9"	—
h25	8	#6	5'-9"	—
h26	16	#4	9'-9"	—
h27	12	#4	9'-9"	—
h28	16	#4	8'-0"	—
h29	8	#4	4'-0"	—
v20	518	#4	3'-9"	—
v21	16	#4	6'-9"	—
Concrete Box Culverts			Cu. Yd.	72.6
Reinforcement Bars			Pound	11,380



TOP SLAB OPENING REINF.



SECTION THRU HEADWALL
(Up Stream End Only)



SHOWING REINFORCEMENT

SHOWING OUTLINES

PLAN

NOTES

A distance of six feet of the barrel shall be poured monolithically with the wingwalls.
Reinforcement Bars shall conform to the requirements of AASHTO M-31, M-42 or M-53, Grade 60.
Bars indicated thus 12 x 4-#5 etc. indicates 12 lines of bars with 4 lengths per line.
All construction joints shall be bonded.
Precast culvert alternate is not allowed.
Cut top slab reinforcement as required to miss 2'-0" slab opening (min. 2" cl.).

*a bars in skew portion of slab shall be ordered full length & cut to fit.
Balance of bar to be used in opposite end of culvert.

DESIGNED	JDC
CHECKED	BDF
DRAWN	RAP
CHECKED	BDF

SSB-H-L 6-1-2000

5'-0" x 3'-0" R.C. BOX CULVERT
52nd AVENUE RAMP 3
FA ROUTE 595 SECTION 1-3-K
ROCK ISLAND COUNTY
STATION 12+59.95

SECTION A-A