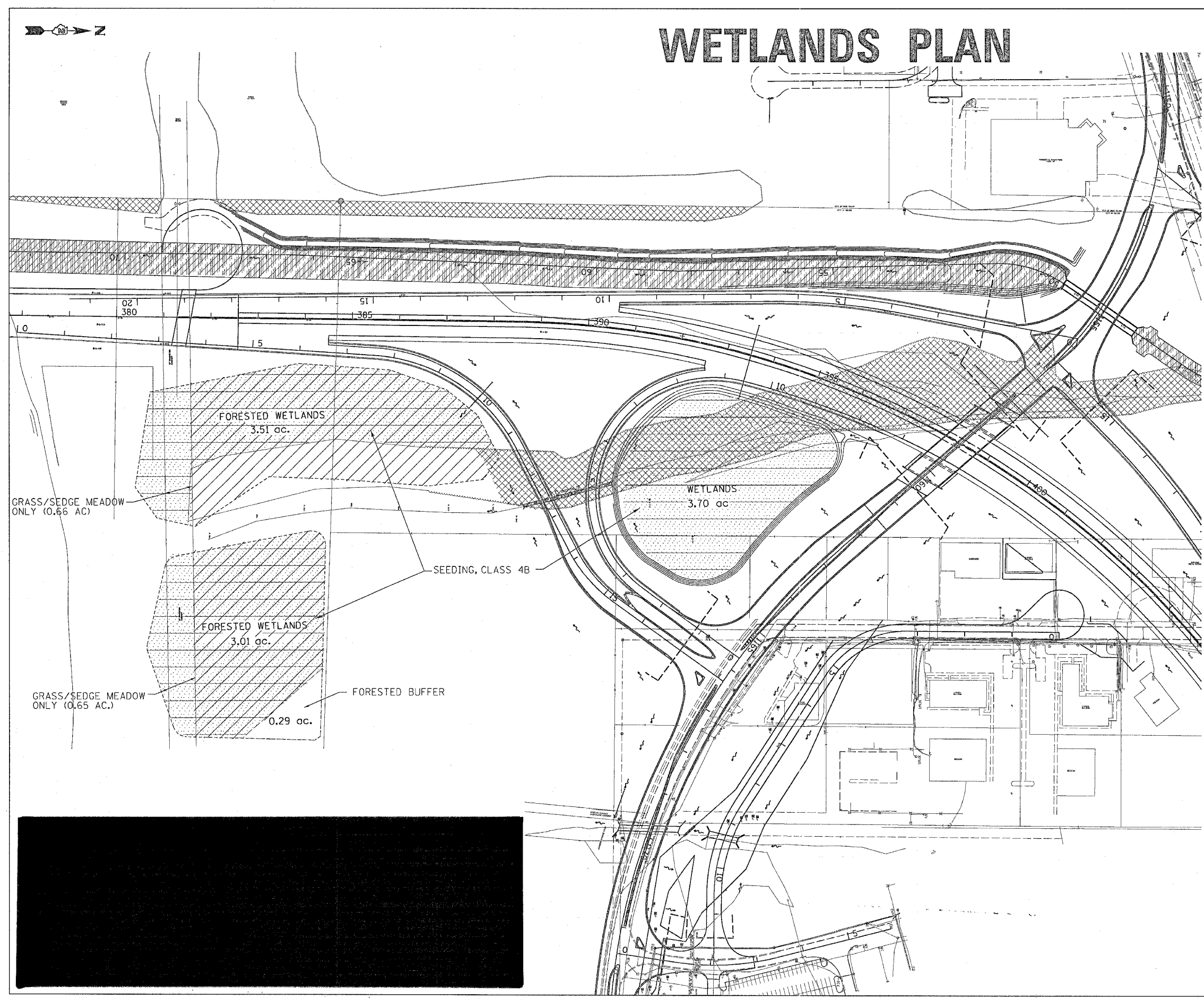


F.A.P. RTE.	SECTION	COUNTY	TOTAL SHEETS	SHEET NO.
595	1-3-K	ROCK ISLAND	476	311
STA.		TO STA.		
FED. ROAD DIST. NO.		ILLINOIS FED. AID PROJECT		

WETLANDS PLAN



REQUIRED FORESTED WETLAND MITIGATION AREAS

MILAN BELTWAY IMPROVEMENTS	± 41.26 ACRES
I-74/280 WEIGH STATION	± 1.80 ACRES
TOTAL AREA REQUIRED	± 43.06 ACRES

- NOTES:**
1. NO TOP SOIL OR SPOIL MATERIAL SHALL BE PLACED IN THE DRIP LINE OF ADJACENT TREES.
 2. THE CONTRACTOR WILL NOT PERFORM ANY WORK OUTSIDE THE CONSTRUCTION LIMITS UNLESS DIRECTED BY THE ENGINEER. OBTAINING PROPER EQUIPMENT AS NEEDED FOR CONDITIONS AT THE PROJECT SITE IS THE RESPONSIBILITY OF THE CONTRACTOR.
 3. TOPSOIL EXCAVATION/PLACEMENT CALCULATED ASSUMES 6" OVER 6.2 ACRE AREA.
 4. THIS CONSTRUCTION SITE IS COVERED BY AN NPDES GENERAL PERMIT FROM THE IEPA. CONTRACTOR IS REQUIRED TO COMPLY WITH ALL THE REQUIREMENTS OF THE GENERAL PERMIT AND THE EROSION CONTROL PLAN.
 5. NO TREES SHALL BE PLANTED IN THE TRANSMISSION LINE EASEMENT.
 6. LAYOUT SHALL BE PERFORMED BY THE DISTRICT LANDSCAPE ARCHITECT.
 7. MULCH SHALL BE HARDWOOD WOOD CHIPS, 5 FOOT WIDTH, 4 INCH THICK WITH WEED BARRIER FABRIC.

SCHEDULE OF QUANTITIES

CODE NO.	ITEM	QUANTITY	UNIT
2220100	EARTH EXCAVATION	25122	C.Y.
2110225	TOP SOIL FURNISH AND PLACE, 6"	17843	S.Y.
2500314	SEEDING, CLASS 4B	131	ACRE
2500050	SEEDING, CLASS 7	10.22	ACRE
K100469	PERENNIAL PLANTS, PRAIRIE TYPE	870.64	UNIT