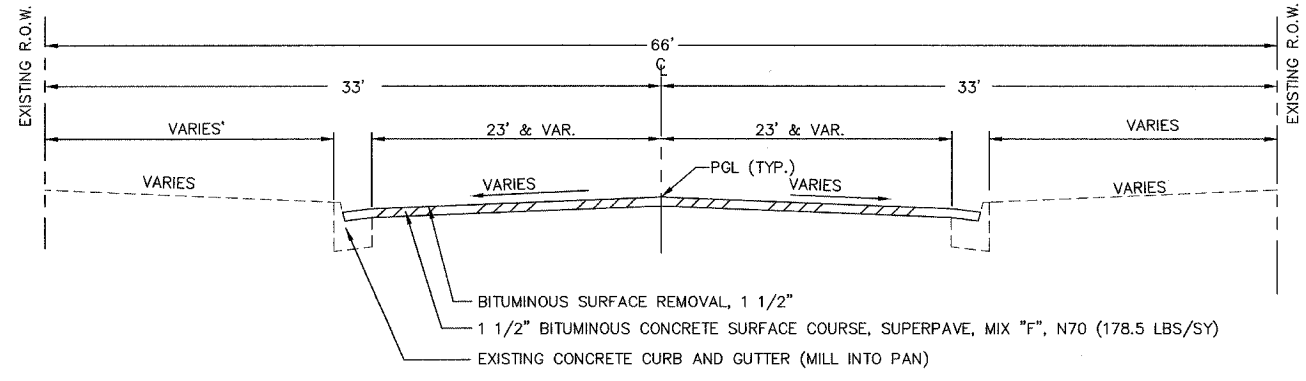
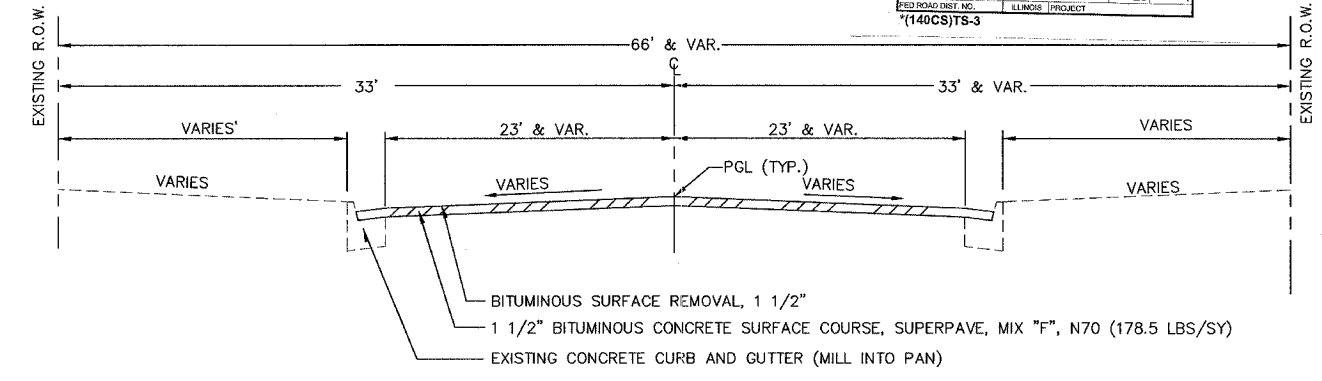


2874 64A38



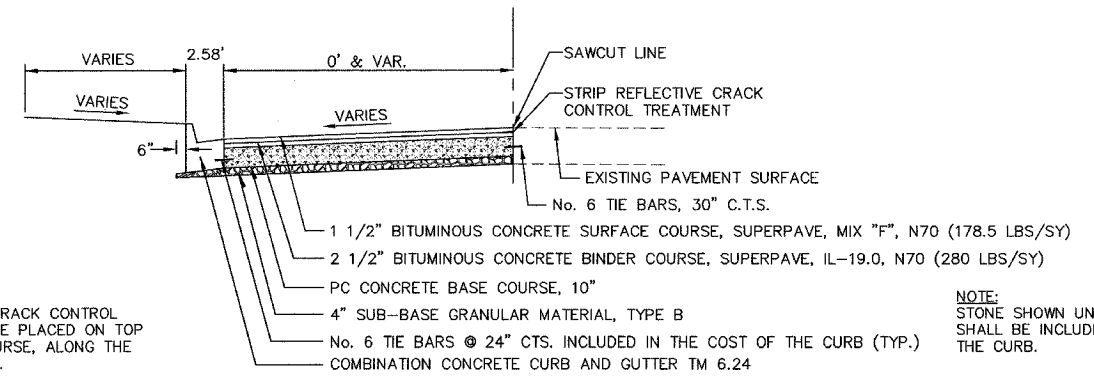
PROPOSED TYPICAL SECTION - WALNUT STREET (STA. 55+65.43 - STA. 61+74.47)

NOT TO SCALE



PROPOSED TYPICAL SECTION - KISHWAUKEE AVE (STA. 70+53.28 - STA. 75+09.44)

NOT TO SCALE

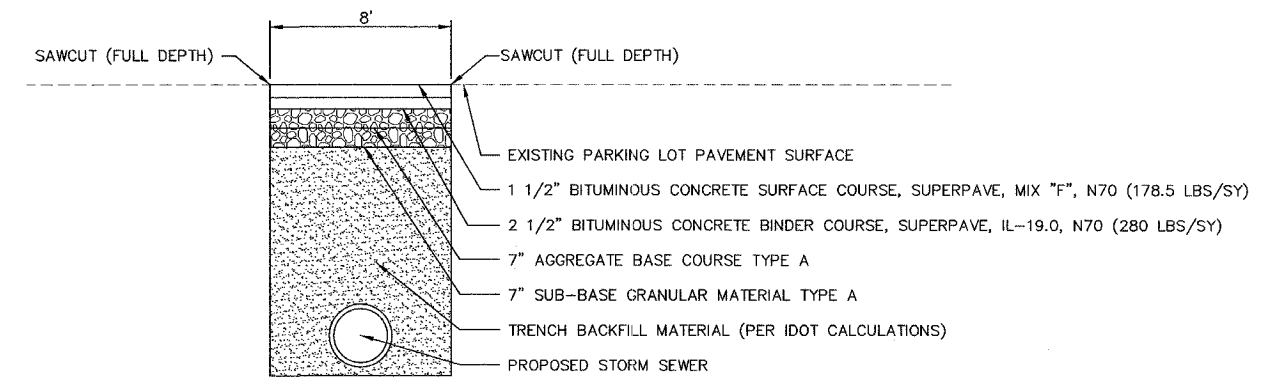


NOTE:
STRIP REFLECTIVE CRACK CONTROL TREATMENT IS TO BE PLACED ON TOP OF THE BINDER COURSE, ALONG THE LONGITUDINAL JOINT.

NOTE:
STONE SHOWN UNDER THE CURB SHALL BE INCLUDED IN THE COST OF THE CURB.

PROPOSED TYPICAL SECTION - PAVEMENT WIDENING

NOT TO SCALE



PROPOSED TYPICAL SECTION - EXISTING PARKING LOT PAVEMENT

NOT TO SCALE

TIE BARS SHALL BE INSTALLED TO TIE PCC APPURTENANCE TO ADJACENT EXISTING CONCRETE PAVEMENT.

TIE THE FOLLOWING TO THE EXISTING CONCRETE PAVEMENT:		LENGTH, SIZE AND SPACING OF TIE BARS:
GUTTER OR CURB & GUTTER	STD. 606001	24" LONG NO. 6 @ 24" CENTERS
PCC BASE COURSE	STD. 353001	24" LONG NO. 6 @ 30" CENTERS
PCC PAVEMENT	STD. 420101	24" LONG NO. 6 @ 30" CENTERS

TIE BARS TO BE INSTALLED IN ACCORDANCE WITH THE APPLICABLE PORTIONS OF ARTICLE 420.01(B) OF THE STANDARD SPECIFICATIONS. SEE HIGHWAY STANDARD 420001 FOR DETAIL ON LONGITUDINAL CONSTRUCTION JOINT GROUTED-IN-PLACE TIE BAR. THE COST OF THE TIE BARS TO BE INCLUDED IN THE COST OF THE PCC APPURTENANCE ADJACENT TO THE EXISTING PAVEMENT.

THE FOLLOWING MIXTURE REQUIREMENTS ARE APPLICABLE FOR THIS PROJECT:

Mixture Use(s):	Surface	Binder
PG:	PG 64-22	PG 64-22
RAP% (Max)	0	15
Design Air Voids	4.2 @ N70	4.2 @ N70
Mixture Composition (Gradation Mixture)	IL 9.5 Or 12.5	IL 19.0
Friction Aggregate	F	N/A
20 Year EASL	1.3	1.3

REVISIONS		
NO.	ITEM	DATE

PLOTTING SCALE:	1"=1'
DRAWN BY:	BSL
CHECKED BY:	JMH
DATE:	DECEMBER 1, 2004

McCLURE ENGINEERING ASSOCIATES, INC.
 7282 Argus Drive Rockford, Illinois 61107
 (815) 398-2332 FAX (815) 398-2496
 Design Firm License: Illinois #184-000816

TYPICAL SECTIONS
 CITY OF ROCKFORD
 WALNUT STREET (HES)
 FILE NAME: H:\SecondSt-2004(HES)\Typesect.dwg
 SEC. 140CS-TS-3 JOB NUMBER: 04-28-04-045