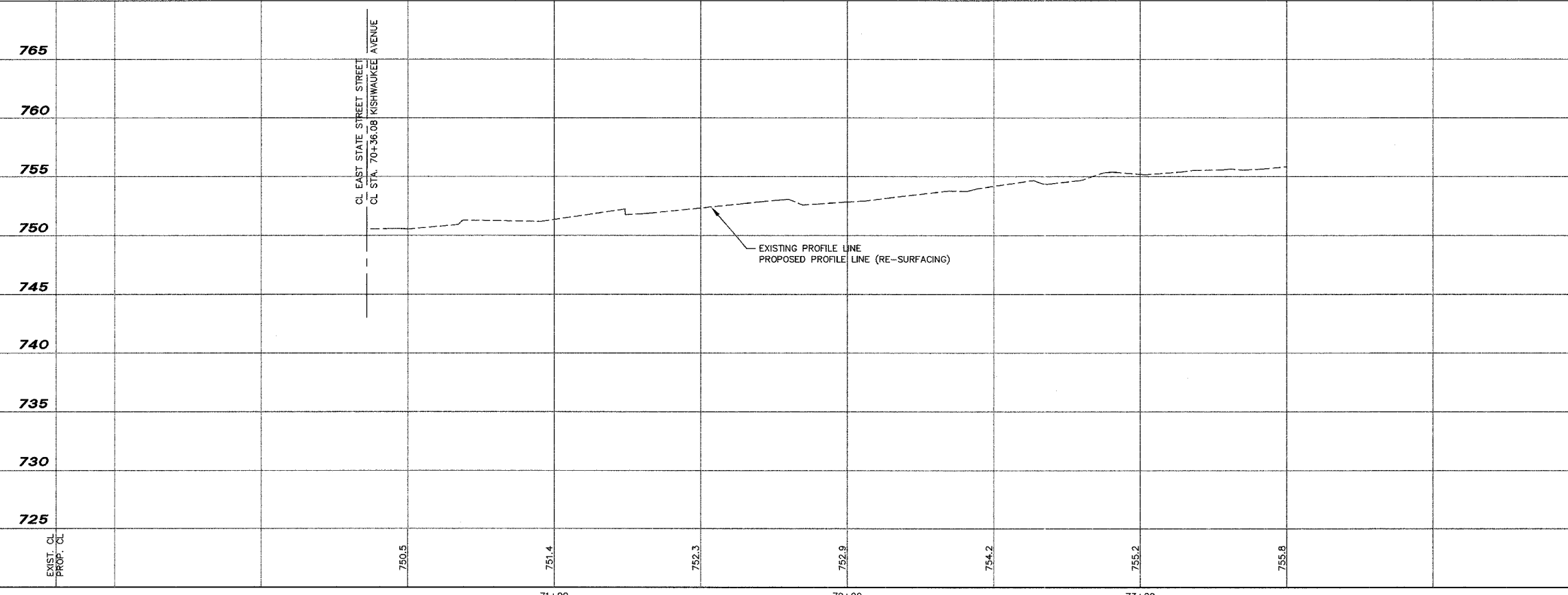
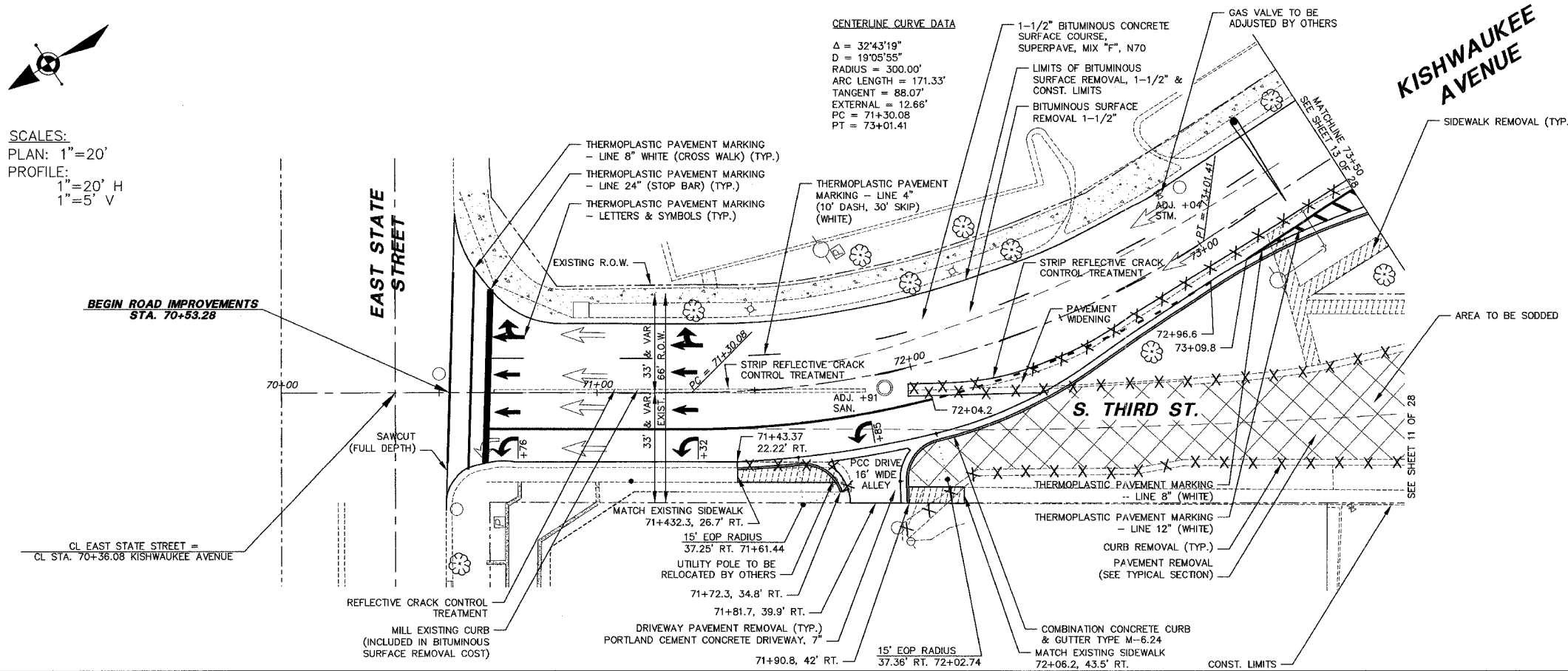


64A38
 28/12



SCALES:
 PLAN: 1"=20'
 PROFILE: 1"=20' H
 1"=5' V

CENTERLINE CURVE DATA
 $\Delta = 32^\circ 43' 19"$
 $D = 19' 05" 55"$
 RADIUS = 300.00'
 ARC LENGTH = 171.33'
 TANGENT = 88.07'
 EXTERNAL = 12.66'
 $PC = 71+30.08$
 $PT = 73+01.41$



BENCHMARKS	
DESCRIPTION	ELEVATION
BM #6: TOP OF SW BOLT ON FIRE HYDRANT AT THE NW CORNER OF WALNUT AND 3rd STREET.	760.64
BM #7: TOP OF SW BOLT ON FIRE HYDRANT AT THE NE CORNER OF WALNUT AND 2nd STREET.	751.59

REVISIONS NO. ITEM DATE _____ _____ _____		PLOTTING SCALE: 1"=1' DRAWN BY: BSL CHECKED BY: JWH DATE: DECEMBER 1, 2004		McCLURE ENGINEERING ASSOCIATES, INC. 7282 Argus Drive Rockford, Illinois 61107 (815) 398-2332 FAX (815) 398-2496 Design Firm License: Illinois #184-000816		PLAN AND PROFILE STA. 70+53.28 - 73+50 CITY OF ROCKFORD WALNUT STREET (HEB) ROCKFORD, ILLINOIS FILE NAME: H:\SecondSt-2004\HES\Kishwaukee-pp1.dwg SEC. 140CS-TS-3 JOB NUMBER: 04-28-04-045		SHEET NO. 12 OF 28
--	--	---	--	--	--	--	--	------------------------------